

MONUMENT 463

CERTIFICATE OF LOCATION OF GOVERNMENT CORNER

Northeast Corner of Section 24, Township 29 North, Range 22 West, County of Ramsey, State of Minnesota.

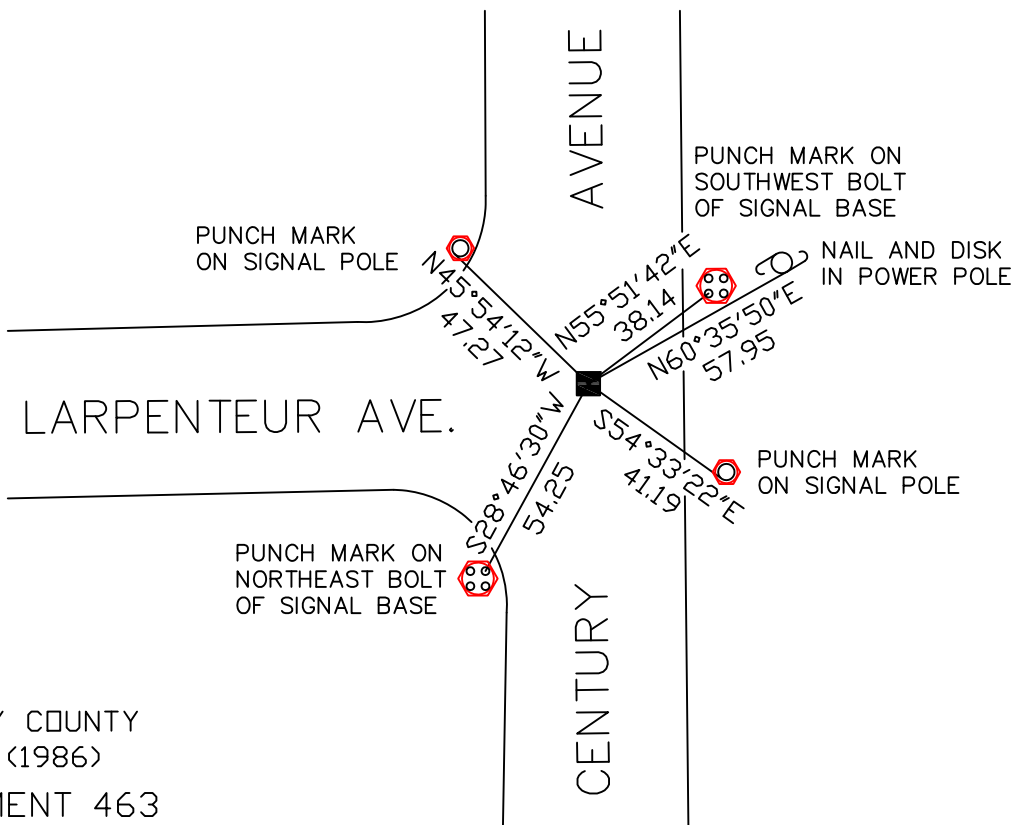
At the corner location shown on the sketch

On October 24, 2008 found a granite monument, within a cast iron manhole assembly.

left monument as found lowered monument removed monument (explain)

On _____ placed a _____

SKETCH OF REFERENCE TIES



RAMSEY COUNTY
NAD83 (1986)
MONUMENT 463

X= 603137.789 (Easting)
Y= 173600.314 (Northing)

ALL DISTANCES ARE SHOWN IN U.S. SURVEY FEET.
BEARINGS ARE FOR TIE REFERENCE PURPOSES ONLY.

Statements of evidence relative to this corner are on the following page(s).

I hereby certify that this document and the data contained herein was prepared by me or under my direct supervision this _____ day of _____, 20____.

SIGNATURE

Minnesota License No. _____

- County Surveyor
 Deputy County Surveyor Land Surveyor

OFFICE OF COUNTY SURVEYOR

County of Ramsey

I hereby certify that this document was filed in the County Surveyor's office on the ____ day of _____, 20____.

David D. Claypool, P.L.S., County Surveyor

By _____, Deputy

MONUMENT 463

Found a granite monument down 4 1/2 in.; placed a cast iron cap and bolt monument, July 18, 1975.

Tied monument, February 20, 1976.

Retied monument, down 0.38 ft., September 24, 1993.

Retied monument, April 15, 2003.

Removed cast iron cap and bolt monument; placed a cast iron manhole assembly around granite monument (down 0.9 ft.), June 28, 2005.

Tied granite monument, October 24, 2008.