

MONUMENT 461

CERTIFICATE OF LOCATION OF GOVERNMENT CORNER

Southwest Corner of Section 13, Township 29 North, Range 22 West, County of Ramsey, State of Minnesota.

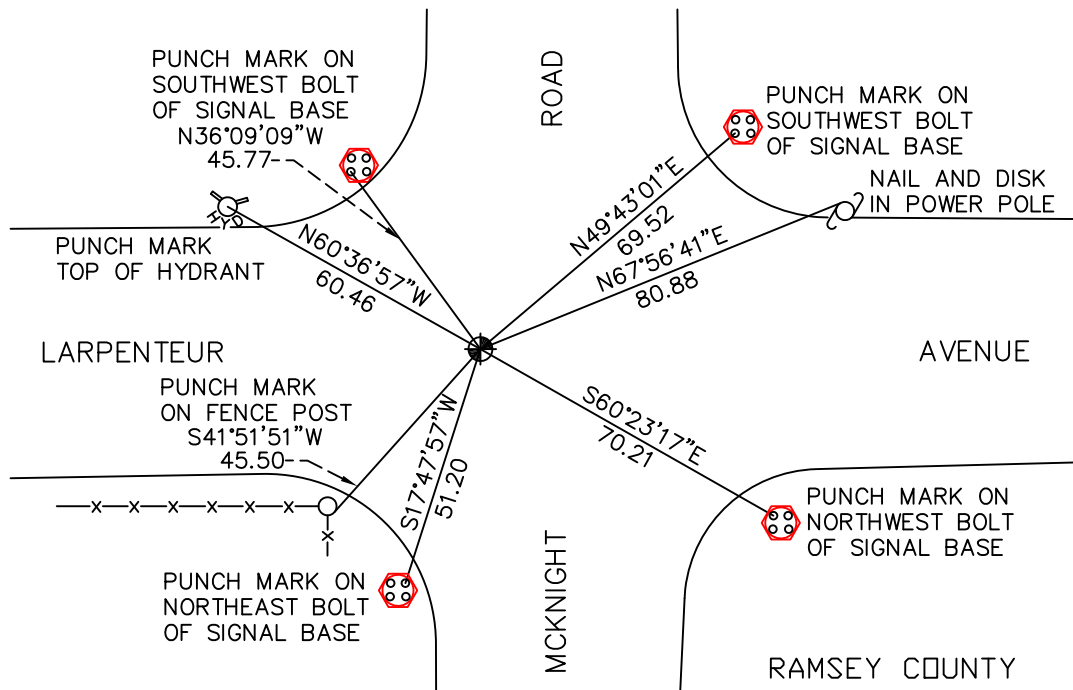
At the corner location shown on the sketch

On June 22, 2009 found a cast iron monument, within a cast iron manhole assembly.

left monument as found lowered monument removed monument (explain)

On _____ placed a _____

SKETCH OF REFERENCE TIES



RAMSEY COUNTY
NAD83 (1986)
MONUMENT 461

ALL DISTANCES ARE SHOWN IN U.S. SURVEY FEET.
BEARINGS ARE FOR TIE REFERENCE PURPOSES ONLY.

X= 597869.274 (Easting)
Y= 173471.418 (Northing)

Statements of evidence relative to this corner are on the following page(s).

I hereby certify that this document and the data contained herein was prepared by me or under my direct supervision this _____ day of _____, 20____.

SIGNATURE

Minnesota License No. _____

- County Surveyor
 Deputy County Surveyor Land Surveyor

OFFICE OF COUNTY SURVEYOR
County of Ramsey

I hereby certify that this document was filed in the County Surveyor's office on the _____ day of _____, 20____.

SIGNATURE

Michael D. Fiebiger, P.L.S.
Ramsey County Surveyor

MONUMENT 461

Found granite monument. No date given in field book.

Checked and retied monument, July 17, 1984.

Monument destroyed by road reconstruction during Summer of 1988.

Placed 20 in. cast iron monument, October 27, 1988.

Retied monument, June 8, 1990.

Retied monument, November 7, 2002.

Retied monument, July 19, 2004.

Retied monument, June 22, 2009.