

MONUMENT 460

CERTIFICATE OF LOCATION OF GOVERNMENT CORNER

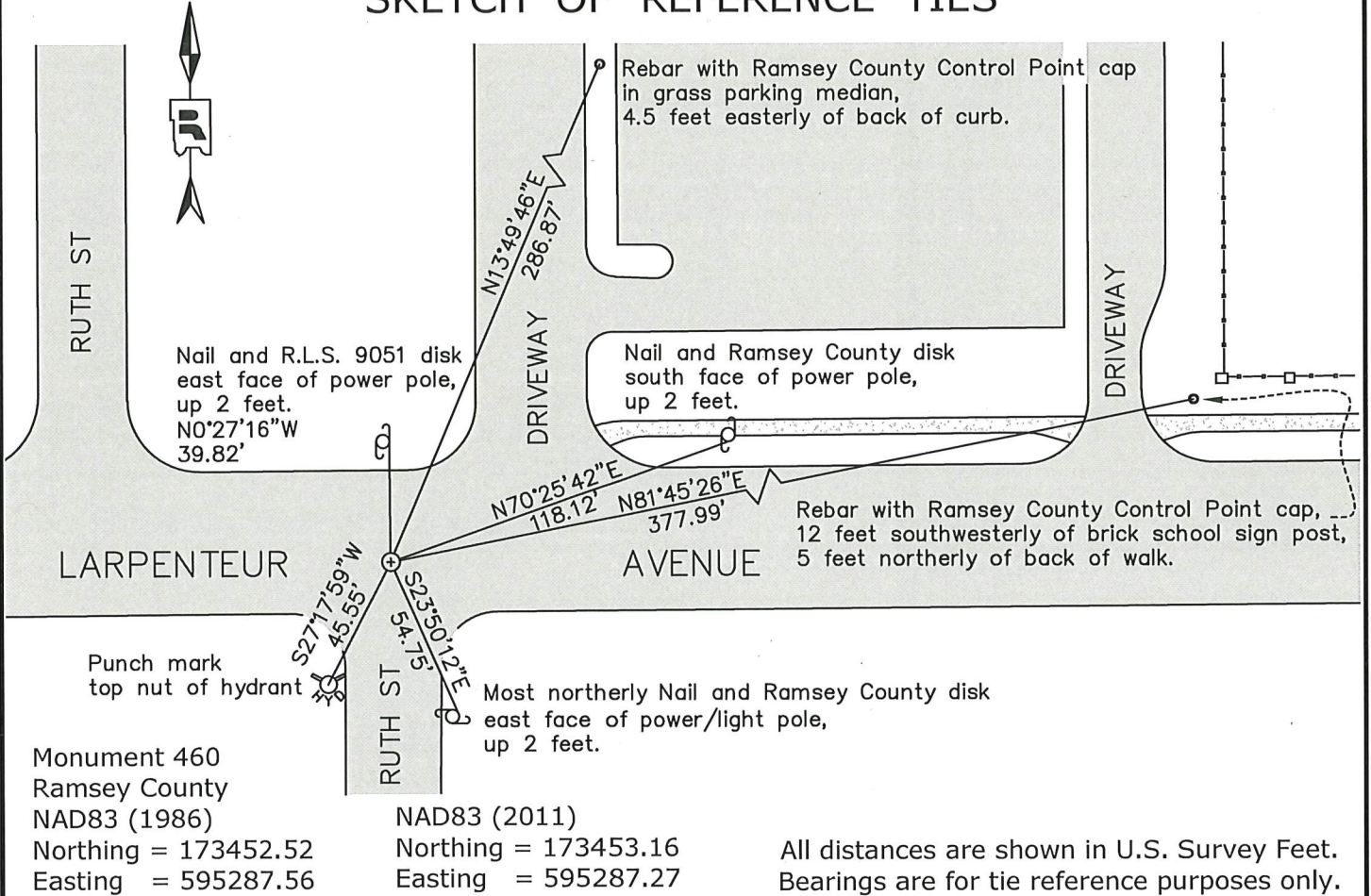
North Quarter Corner of Section 23, Township 29 North, Range 22 West, County of Ramsey, State of Minnesota.

At the corner location shown on the sketch

On May 6, 2019 found a cast iron monument, down 0.2 ft. in bituminous road.

On September 5, 2019 placed a 5/8 inch x 14 inch rebar with 3 inch aluminum cap stamped "Ramsey County Surveyor", flush in new bituminous road.

SKETCH OF REFERENCE TIES



Statements of evidence relative to this corner are on the following page.

I hereby certify that this survey, plan, or report was prepared by me or under my direct supervision, that I am a duly Licensed Land Surveyor under the laws of the state of Minnesota, and that this certificate is correct and complete to the best of my knowledge and belief.

Devin R. Ball 4/8/22
 Devin R. Ball Date
 Deputy County Surveyor
 Minnesota License No. 56023

OFFICE OF COUNTY SURVEYOR
 County of Ramsey

I hereby certify that this document was filed in the County Surveyor's office this 11th day of April, 20 22.

Daniel D. Baar
 Daniel D. Baar
 Ramsey County Surveyor
 Minnesota License No. 45816

MONUMENT 460

North Quarter Corner of Section 23, Township 29, Range 22

November 29, 1847	West corrected between Sections 14 & 23, 39.72 1/2, Set 1/4 Section post, B. Oak 16 N45°W 14, Bur Oak 8 S24-1/2°W 10. Isaac N Higbey Deputy Surveyor
July 10, 1890	Monument set by J.H. Armstrong. City of St. Paul Surveyor's Office
January 1891	One bearing stump found. City of St. Paul Surveyor's Office
September 28, 1928	Tied out monument. City of St. Paul Surveyor's Office
January 30, 1934	Tied out stone monument. City of St. Paul Surveyor's Office
May 21, 1958	Tied out monument. City of St. Paul Surveyor's Office
April 14, 1960	Placed a 4 inch iron. City of St. Paul Surveyor's Office
March 1967	Checked monument. Notes indicate a possible iron found. Ramsey County Engineering Department
Unknown Date	Cast iron monument set to grade. City of St. Paul Surveyor's Office
Unknown Date	Found a cast iron monument. No date given in field book. Ramsey County Surveyor's Office
1980	Checked ties. City of St. Paul Surveyor's Office
May 10, 1984	Checked ties. City of St. Paul Surveyor's Office
July 17, 1984	Retied monument. Ramsey County Surveyor's Office
November 6, 2002	Retied monument. Ramsey County Surveyor's Office
August 27, 2007	Retied monument. Ramsey County Surveyor's Office
December 1, 2010	Tied cast iron monument. City of St. Paul Surveyor's Office
July 17, 2012	Found a cast iron monument, down 0.2 feet in bituminous road and checked local ties. Ramsey County Surveyor's Office
April 7, 2014	Found a cast iron monument, 0.15 feet below asphalt grade, and recorded ties. City of St. Paul Surveyor's Office

MONUMENT 460

North Quarter Corner of Section 23, Township 29, Range 22

- June 26, 2017 Found a cast iron monument, down 0.2 feet in bituminous road.
Checked local ties using Certificate of Location dated February 20, 2013.
Ramsey County Surveyor's Office
- May 6, 2019 Found a cast iron monument, down 0.2 feet in bituminous road.
Checked local ties using Certificate of Location dated February 20, 2013
and established offsets prior to removal during road construction.
Ramsey County Surveyor's Office
- September 5, 2019 Placed a 5/8 inch x 14 inch rebar with 3 inch aluminum cap stamped
"Ramsey County Surveyor", flush in new bituminous road using
offsets and recorded local ties.
Ramsey County Surveyor's Office
- November 10, 2021 Found a 3 inch aluminum cap stamped "Ramsey County Surveyor", flush
in bituminous road and inspected local ties.
Ramsey County Surveyor's Office