

MONUMENT 456EE

CERTIFICATE OF LOCATION OF GOVERNMENT CORNER

Witness Monument to Meander Corner No. 7, Section 16, Township 29 North, Range 22 West, County of Ramsey, State of Minnesota.

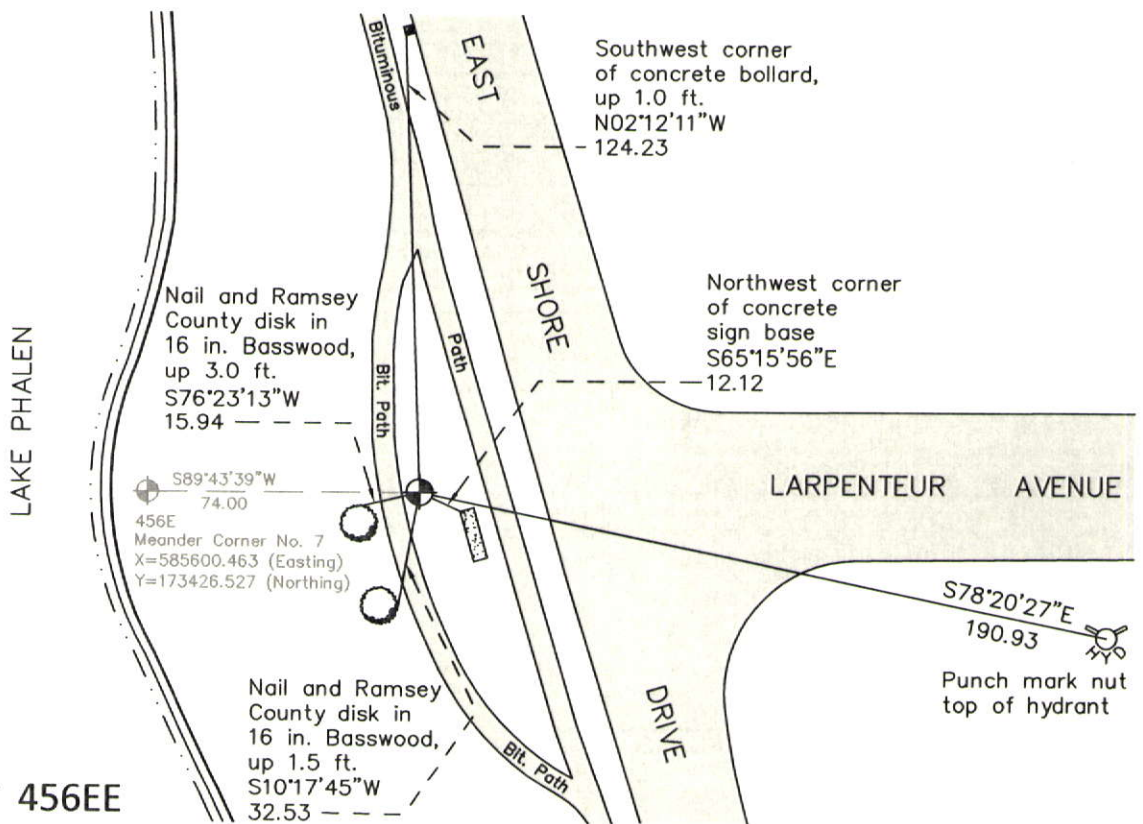
At the corner location shown on the sketch

On June 8, 2011 found a cast iron monument, down 0.2 ft.

left monument as found raised/lowered monument removed monument (explain)

On _____ placed a _____

SKETCH OF REFERENCE TIES



RAMSEY COUNTY
NAD83 (1986)

MONUMENT 456EE

X= 585674.462 (Easting)
Y= 173426.879 (Northing)

ALL DISTANCES ARE SHOWN IN U.S. SURVEY FEET.
BEARINGS ARE FOR TIE REFERENCE PURPOSES ONLY.

Statements of evidence relative to this corner are on the following page.

I hereby certify that this document was prepared by me or under my direct supervision and that I am a duly Licensed Land Surveyor under the laws of the State of Minnesota.

Daniel D. Baar 12-30-14
Daniel D. Baar Date

Minnesota License No. 45816

- County Surveyor Land Surveyor
 Deputy County Surveyor

OFFICE OF COUNTY SURVEYOR
County of Ramsey

I hereby certify that this document was filed in the County Surveyor's office this 30th day of December, 20 14.

Craig W. Hinzman
Craig W. Hinzman, L.S.
Ramsey County Surveyor

MONUMENT 456EE

Witness Monument to Meander Corner No. 7, Section 16, Township 29 North, Range 22 West

To lake & set post, Bur Oak 13 N12°E 45, Do Bur Oak 16 S45°E 31, November 29, 1847.

Found two bearing stumps; monument set by J. H. Armstrong, September, 1887 (City of St. Paul notes).

Monument destroyed by storm sewer placement, never replaced; no date given in field book.

Determined mathematical location and placed position 74 ft. east of Meander Corner No. 7 on line to the east, August 23, 1989.

Placed a 20 in. cast iron monument, May 11, 1990.

Tied monument, October 12, 2001.

Retied monument, July 27, 2006.

Retied cast iron monument, down +/-0.2 ft., June 8, 2011.