

MONUMENT 455E

CERTIFICATE OF LOCATION OF GOVERNMENT CORNER

Meander Corner on the South Line of Section 16, Township 29 North, Range 22 West, County of Ramsey, State of Minnesota.

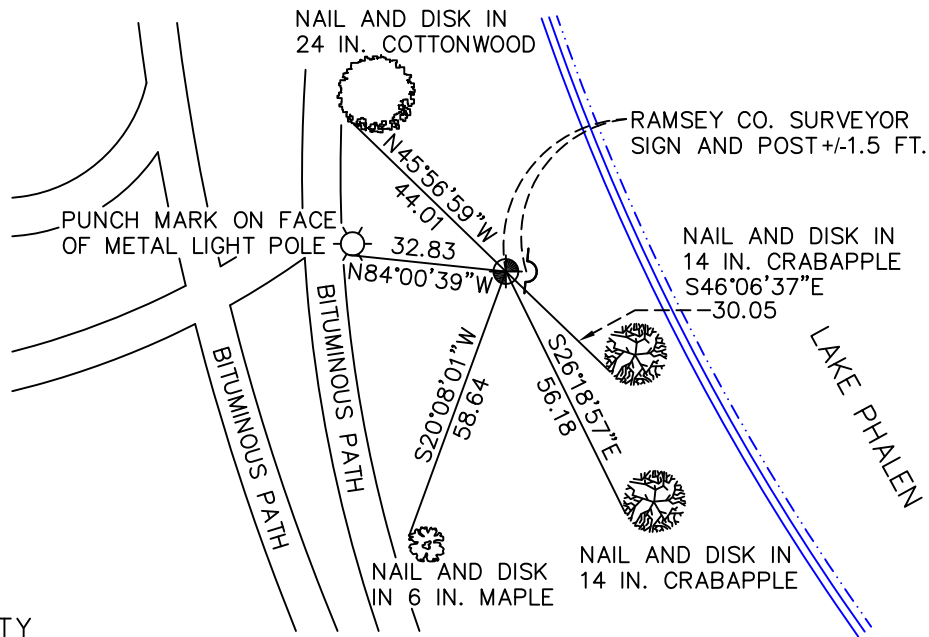
At the corner location shown on the sketch

On June 22, 2009 found a cast iron monument, flush.

left monument as found lowered monument removed monument (explain)

On _____ placed a _____

SKETCH OF REFERENCE TIES



RAMSEY COUNTY
NAD83 (1986)

MONUMENT 455E

X= 583837.806 (Easting)
Y= 173414.231 (Northing)

ALL DISTANCES ARE SHOWN IN U.S. SURVEY FEET.
BEARINGS ARE FOR TIE REFERENCE PURPOSES ONLY.

Statements of evidence relative to this corner are on the following page(s).

I hereby certify that this document and the data contained herein was prepared by me or under my direct supervision this _____ day of _____, 20____.

SIGNATURE

Minnesota License No. _____

- County Surveyor
 Deputy County Surveyor Land Surveyor

OFFICE OF COUNTY SURVEYOR

County of Ramsey

I hereby certify that this document was filed in the County Surveyor's office on the _____ day of _____, 20____.

SIGNATURE

Michael D. Fiebiger, P.L.S.
Ramsey County Surveyor

MONUMENT 455E

No visible monument; dug a 4 ft. x 4 ft. hole down 7.2 ft. to white sand and found granite monument westerly +/- 2 ft., laying down, August 16, 1989.

Determined mathematical location and placed P.K. nails, August 23, 1989.

Placed 20 in. cast iron monument. No date given in field book.

Tied out monument, May 11, 1990.

Retied monument, April 14, 2003.

Tied out monument for removal during construction activity in area, April 22, 2004.

Placed a 20 in. cast iron monument; sign placed 1.5 ft. east of monument; tied out, November 8, 2004.

Retied monument, June 22, 2009.