

MONUMENT 455

CERTIFICATE OF LOCATION OF GOVERNMENT CORNER

Southeast Corner of Section 17, Township 29 North, Range 22 West, County of Ramsey, State of Minnesota.

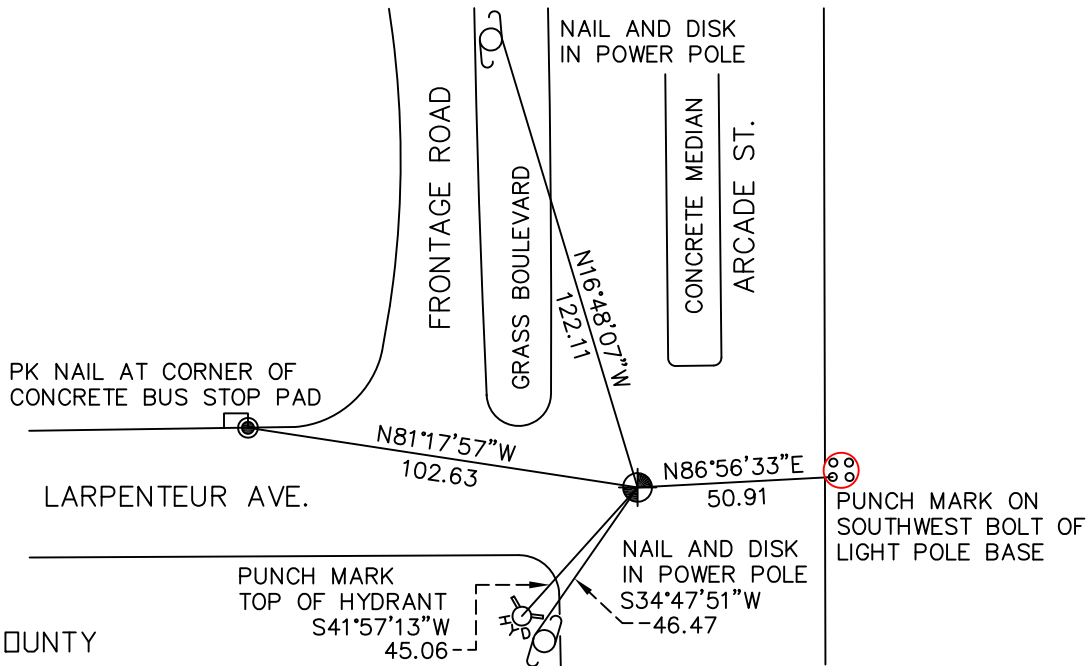
At the corner location shown on the sketch

On June 16, 2009 found a cast iron monument with the top broken off,
down 0.35 feet.

left monument as found lowered monument removed monument (explain)

On _____ placed a _____

SKETCH OF REFERENCE TIES



RAMSEY COUNTY
NAD83 (1986)

MONUMENT 455

X= 582072.062 (Easting)
Y= 173402.035 (Northing)

ALL DISTANCES ARE SHOWN IN U.S. SURVEY FEET.
BEARINGS ARE FOR TIE REFERENCE PURPOSES ONLY.

Statements of evidence relative to this corner are on the following page(s).

I hereby certify that this document and the data contained herein was prepared by me or under my direct supervision this _____ day of _____, 20____.

SIGNATURE

Minnesota License No. _____

- County Surveyor
 Deputy County Surveyor Land Surveyor

OFFICE OF COUNTY SURVEYOR

County of Ramsey

I hereby certify that this document was filed in the County Surveyor's office on the _____ day of _____, 20____.

SIGNATURE

Michael D. Fiebiger, P.L.S.
Ramsey County Surveyor

MONUMENT 455

Found a granite monument, 1974.

Checked monument, August 12, 1977.

Granite not at top after Mn/DOT repaired S.T.H. 61 in 1988. Found granite chopped off, down +/- 0.8 ft.; relocated position from traverse work and cemented in a 4 5/8 in. short cast iron monument, September 22, 1989.

Tied monument, June 8, 1990.

Found cast iron monument with top broken off; retied using center of shaft, June 16, 2009.