

MONUMENT 451

CERTIFICATE OF LOCATION OF GOVERNMENT CORNER

Northeast Corner of Section 24, Township 29 North, Range 23 West, County of Ramsey, State of Minnesota.

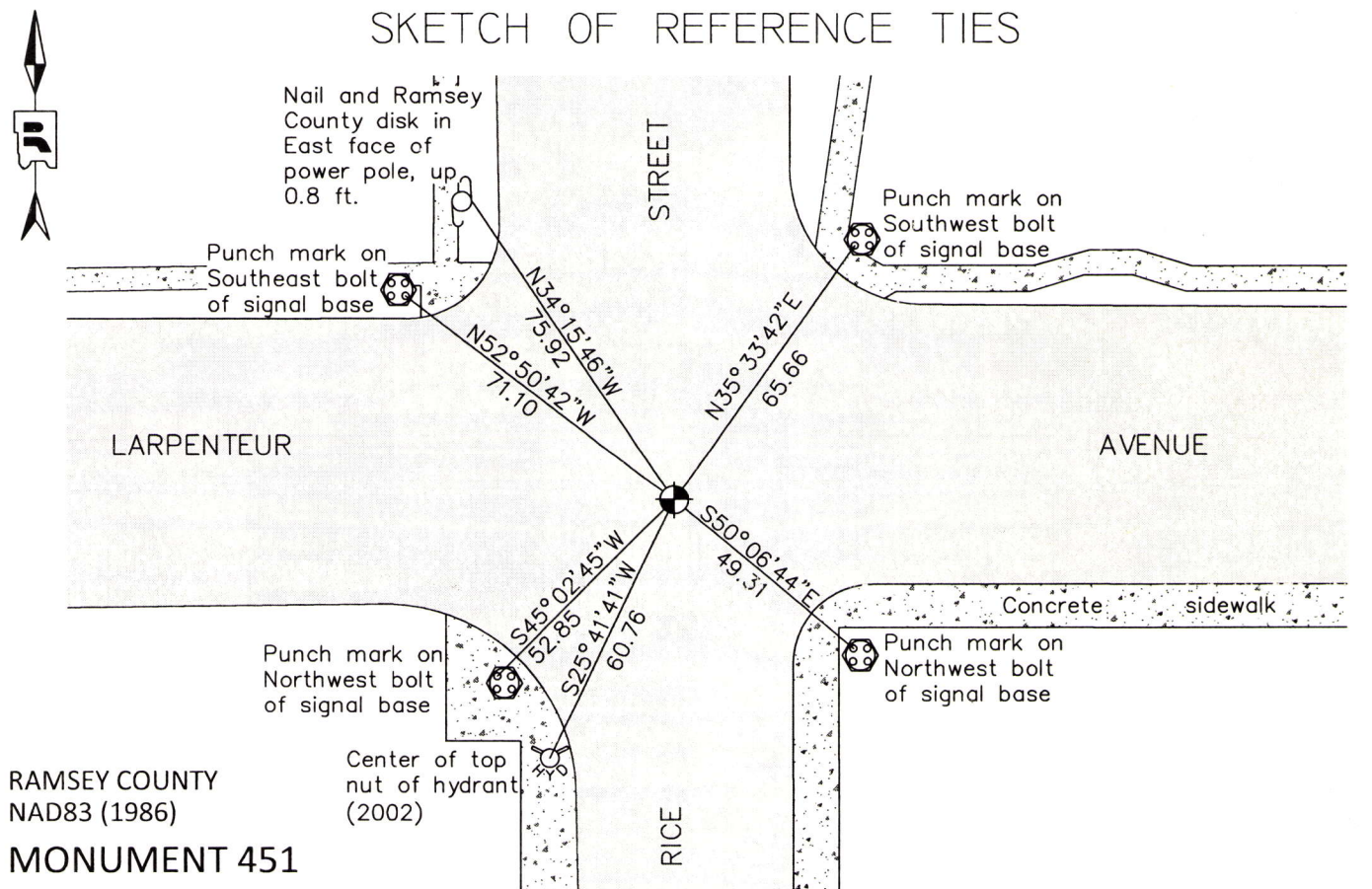
At the corner location shown on the sketch

On October 21, 2014 found a broken cast iron monument, with shaft remaining, down 0.1 ft. in bituminous road.

left monument as found raised/lowered monument removed monument (explain)

On October 21, 2014 placed a new 20 inch "Ramsey County" cast iron monument within a cast iron manhole assembly.

SKETCH OF REFERENCE TIES



RAMSEY COUNTY
NAD83 (1986)
MONUMENT 451

X= 571786.033 (Easting)
Y= 173321.475 (Northing)

ALL DISTANCES ARE SHOWN IN U.S. SURVEY FEET.
BEARINGS ARE FOR TIE REFERENCE PURPOSES ONLY.

Statements of evidence relative to this corner are on the following page.

I hereby certify that this document was prepared by me or under my direct supervision and that I am a duly Licensed Land Surveyor under the laws of the State of Minnesota.

Daniel D. Baar 12-22-14
Daniel D. Baar Date

Minnesota License No. 45816

County Surveyor Land Surveyor
 Deputy County Surveyor

OFFICE OF COUNTY SURVEYOR
County of Ramsey

I hereby certify that this document was filed in the County Surveyor's office this 22nd day of December, 20 14.

Craig W. Hinzman
Craig W. Hinzman, L.S.
Ramsey County Surveyor

MONUMENT 451

Northeast Corner of Section 24, Township 29 North, Range 23 West

October 8, 1847	Set post at Corner to Sections 13, 18, 19, & 24, Br. Oak 10 N86°E 19, B. Oak 6 N42°W 32, Br. Oak 10 S36°E 71, B. Oak 8 S18°W 31, James M. Marsh, Deputy Surveyor
April 22, 1887	Monument set. (City of Saint Paul Surveyor's Office)
April 15, 1890	Monument reset by J. H. Armstrong. (City of Saint Paul Surveyor's Office)
February 20, 1892	Monument reset by J. B. Irvine. (City of Saint Paul Surveyor's Office)
January 30, 1934	Tied granite monument at grade. (City of Saint Paul Surveyor's Office)
February, 1961	Tied granite monument, down 0.6 ft. (City of Saint Paul Surveyor's Office)
March 27, 1963	Tied monument, down 0.5 ft., Ramsey County Engineer's Office
May 8, 1972	Cast iron pin sitting over granite removed. Granite monument down +/-1 ft. below bituminous. (City of Saint Paul Surveyor's Office)
May 10, 1972	Removed cast iron pipe, set cast iron monument over granite. (City of Saint Paul Surveyor's Office)
July 16, 1990	Tied monument, Ramsey County Surveyor's Office.
July 19, 2002	Retied monument, Ramsey County Surveyor's Office.
August 22, 2007	Retied monument, Ramsey County Surveyor's Office.
December 1, 2010	Tied cast iron monument. (City of Saint Paul Surveyor's Office)
August 21, 2012	Found cast iron monument with top broken off, down 0.1 ft. Checked tie distances to center of shaft, ties were still good, Ramsey County Surveyor's Office.
May 29, 2014	Found broken cast iron monument, down 0.1 feet in bituminous road. Set construction offsets for removal of monument during road reconstruction of Larpenteur Avenue, Ramsey County Surveyor's Office.

MONUMENT 451

Northeast Corner of Section 24, Township 29 North, Range 23 West

October 21, 2014

Removed cast iron monument during road construction. Excavated to a depth of 2.5 feet below road grade, searching for granite monument last noted May10, 1972, found nothing additional. Set new 20 inch "Ramsey County" cast iron monument within a cast iron manhole assembly using construction offsets and local ties. Tied out monument, Ramsey County Surveyor's Office.