

MONUMENT 44N

CERTIFICATE OF LOCATION OF GOVERNMENT CORNER

Meander Corner No. 18, Section 3, Township 30 North, Range 22 West, County of Ramsey, State of Minnesota.

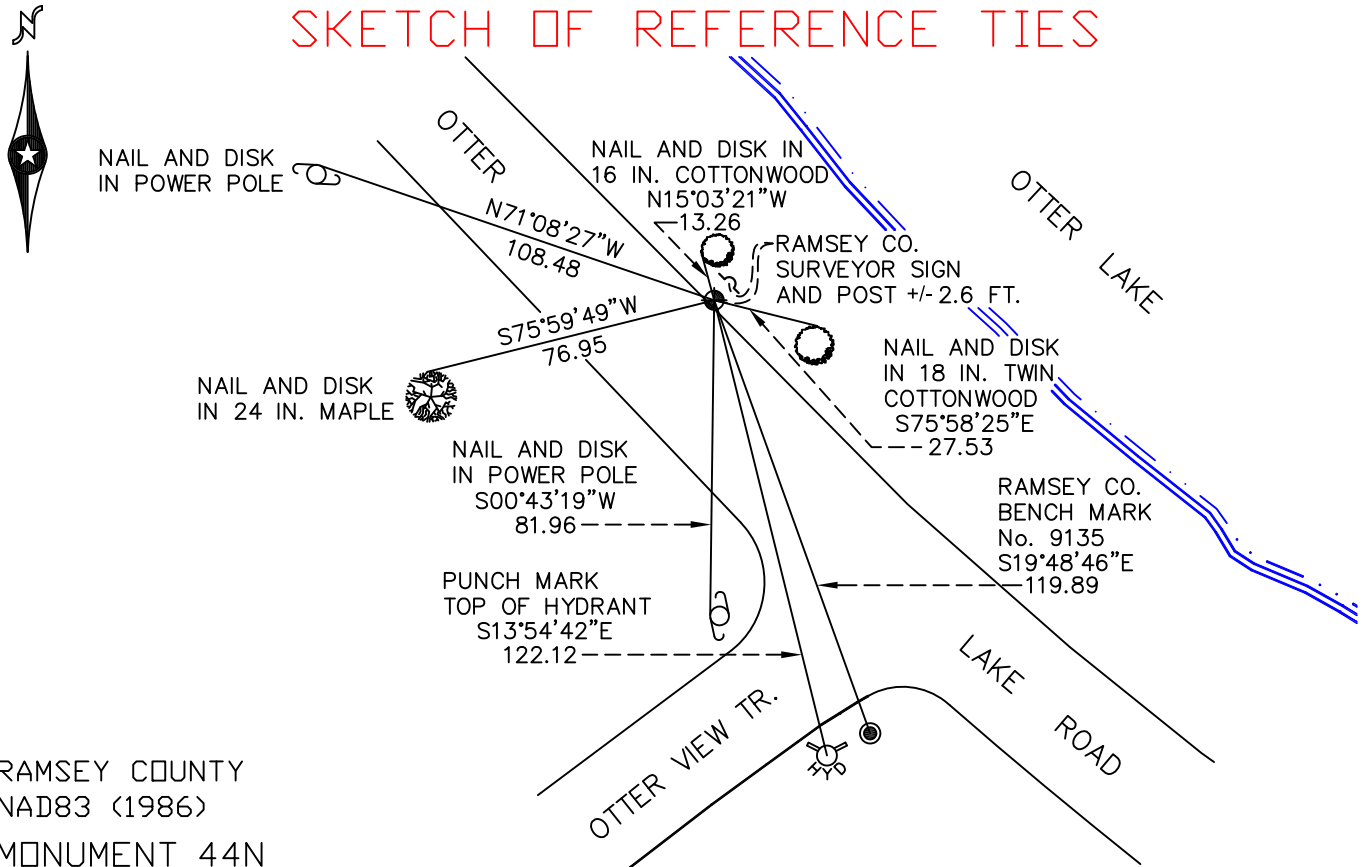
At the corner location shown on the sketch

On September 24, 2009 found a cast iron monument, flush.

left monument as found lowered monument removed monument (explain)

On _____ placed a _____

SKETCH OF REFERENCE TIES



RAMSEY COUNTY
NAD83 (1986)
MONUMENT 44N

X= 587052.977 (Easting)
Y= 220758.955 (Northing)

ALL DISTANCES ARE SHOWN IN U.S. SURVEY FEET.
BEARINGS ARE FOR TIE REFERENCE PURPOSES ONLY.

Statements of evidence relative to this corner are on the following page(s).

I hereby certify that this document and the data contained herein was prepared by me or under my direct supervision this _____ day of _____, 20____.

SIGNATURE

Minnesota License No. _____

- County Surveyor
 Deputy County Surveyor Land Surveyor

OFFICE OF COUNTY SURVEYOR
County of Ramsey

I hereby certify that this document was filed in the County Surveyor's office on the _____ day of _____, 20____.

SIGNATURE

Michael D. Fiebiger, P.L.S.
Ramsey County Surveyor

MONUMENT 44N

Found granite monument flush and retied, July 3, 1974.

Found granite monument down +/-1.0 ft., retied, May 1, 1989.

Placed sign and post on lake side of monument, September 28, 1991.

Found granite monument down 18 in., retied, September 22, 1998.

Cut off 2 in. of a 20 in. cast iron monument and set in place, on top of granite monument, September 24, 1998.

Retied monument, October 6, 2004.

Retied monument, September 24, 2009.