

MONUMENT 447

CERTIFICATE OF LOCATION OF GOVERNMENT CORNER

Northeast Corner of Section 22, Township 29 North, Range 23 West, County of Ramsey, State of Minnesota.

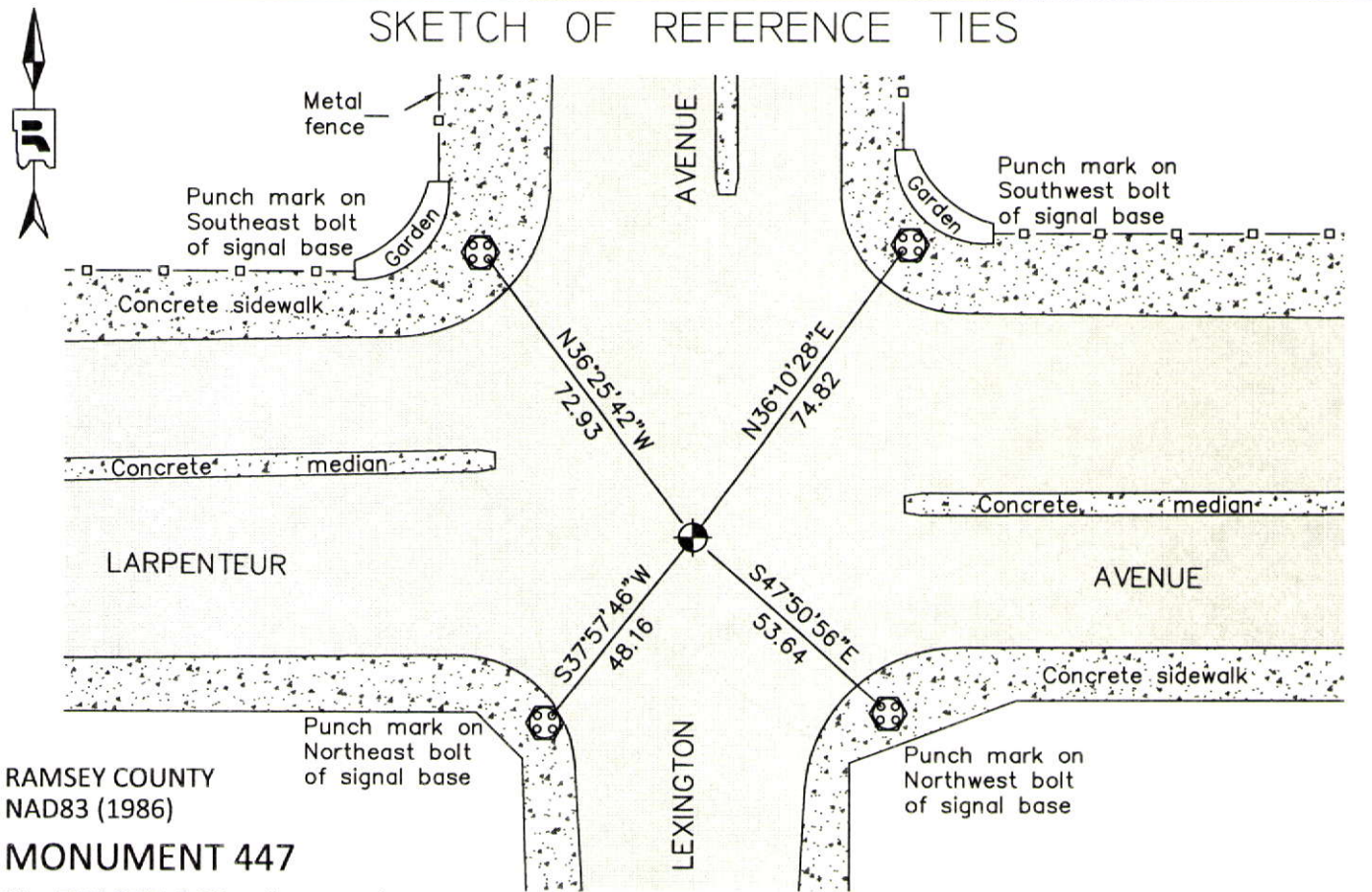
At the corner location shown on the sketch

On August 15, 2012 found a cast iron monument within a cast iron manhole assembly.

left monument as found raised/lowered monument removed monument (explain)

On _____ placed a _____

SKETCH OF REFERENCE TIES



RAMSEY COUNTY
NAD83 (1986)

MONUMENT 447

X= 561285.080 (Easting)
Y= 173327.465 (Northing)

ALL DISTANCES ARE SHOWN IN U.S. SURVEY FEET.
BEARINGS ARE FOR TIE REFERENCE PURPOSES ONLY.

Statements of evidence relative to this corner are on the following page.

I hereby certify that this document was prepared by me or under my direct supervision and that I am a duly Licensed Land Surveyor under the laws of the State of Minnesota.

Daniel D. Baar 12-30-14
Date

Minnesota License No. 45816

- County Surveyor Land Surveyor
 Deputy County Surveyor

OFFICE OF COUNTY SURVEYOR
County of Ramsey

I hereby certify that this document was filed in the County Surveyor's office this 30th day of December, 20 14.

Craig W. Hinzman
Craig W. Hinzman, L.S.
Ramsey County Surveyor

MONUMENT 447

Northeast Corner of Section 22, Township 29 North, Range 23 West

Set post corner to Sections 14, 15, 22, & 23, W. Oak 18 S20°E 84, Bur Oak 28 N65°W 66, November 3, 1847.

Tied iron pipe, flush, January 31, 1934. (City of Saint Paul Surveyor's Office)

Found hole in concrete, no monument or iron pin found, March 24, 1972. (City of Saint Paul Surveyor's Office)

Re-established location by surveys from the City of St. Paul, 1979.

Placed a short (4-5/8 in.) cast iron monument, August 17, 1981.

Found a Ramsey County cast iron monument at grade; tied, November 15, 1989. (City of Saint Paul Surveyor's Office)

Checked cast iron monument at grade in concrete, March 25, 1991. (City of Saint Paul Surveyor's Office)

Removed cast iron monument for construction, April 28, 2000.

Reset 20 in. cast iron monument; Shafer Contracting to set 12 in. P.V.C. pipe and cast iron manhole assembly, August 15, 2000.

Retied monument, down +/-15 in., March 28, 2001.

Retied monument, September 5, 2007.

Tied cast iron monument, December 3, 2009. (City of Saint Paul Surveyor's Office)

Checked condition of cast iron monument in cast iron manhole assembly and ties, August 15, 2012.