

MONUMENT 443

CERTIFICATE OF LOCATION OF FOUND MONUMENT

Northeast Corner of Section 20, Township 29 North, Range 23 West, County of Ramsey, State of Minnesota.

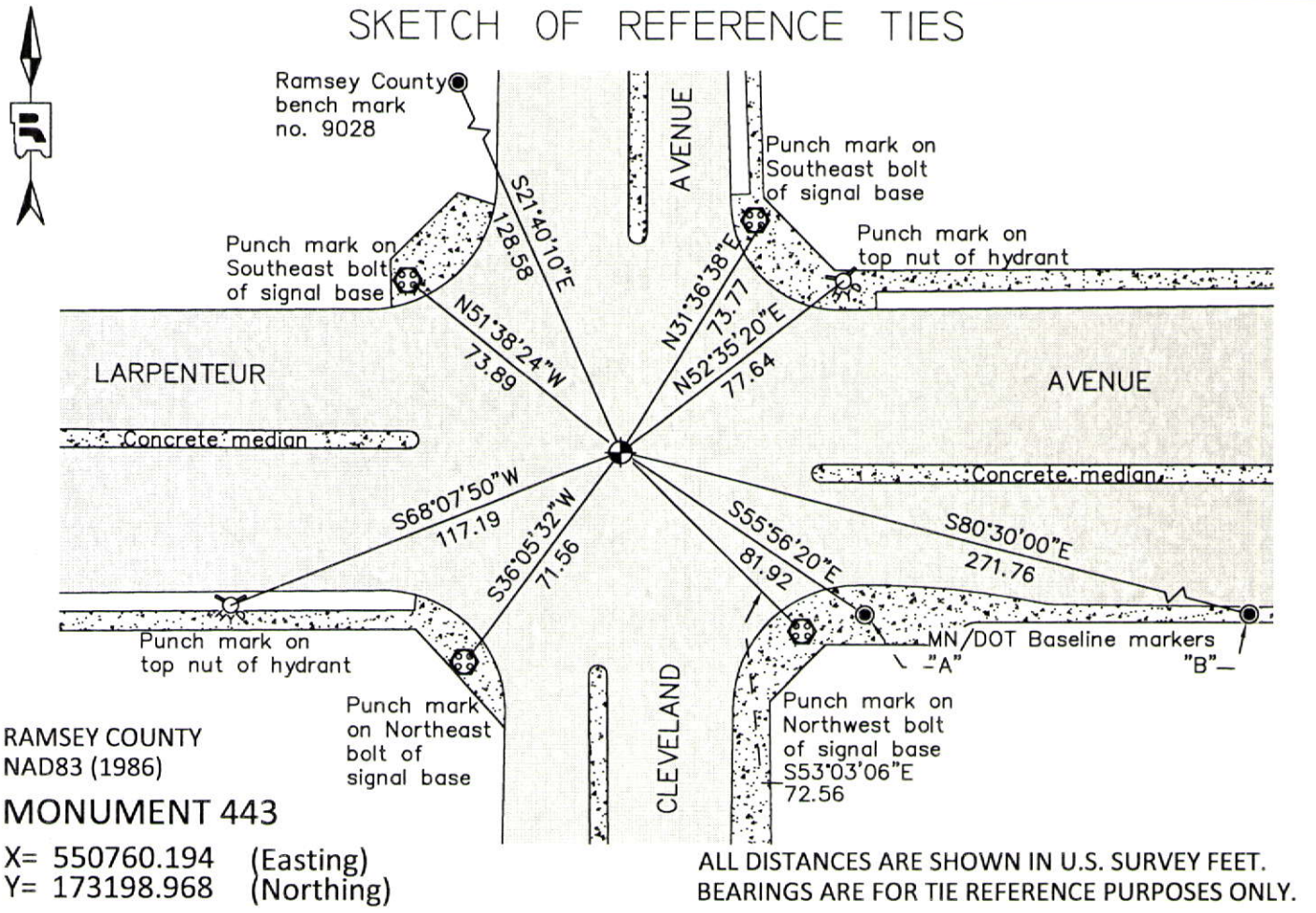
At the corner location shown on the sketch

On October 3, 2012 found a "Ramsey County" cast iron monument within a cast iron manhole assembly.

left monument as found
 raised/lowered monument
 removed monument (explain)

On _____ placed a _____

SKETCH OF REFERENCE TIES



Statements of evidence relative to this corner are on the following page.

I hereby certify that this document was prepared by me or under my direct supervision and that I am a duly Licensed Land Surveyor under the laws of the State of Minnesota.

Daniel D. Baar 12-30-14
 Daniel D. Baar Date
 Minnesota License No. 45816

- County Surveyor
 Deputy County Surveyor
 Land Surveyor

OFFICE OF COUNTY SURVEYOR
 County of Ramsey

I hereby certify that this document was filed in the County Surveyor's office this 30th day of December, 2014.

Craig W. Hinzman
 Craig W. Hinzman, L.S.
 Ramsey County Surveyor

MONUMENT 443

Northeast Corner of Section 20, Township 29 North, Range 23 West

Set post Corner to Sections 16, 17, 20, & 21, Bur Oak 20 S39°W 83, "Do" (Bur Oak) 14 N51°W 33, November 3, 1847.

Monument set by R. J. Johnson, January, 1889. (City of Saint Paul Surveyor)

Tied granite monument, at grade, February, 1934. (City of Saint Paul Surveyor)

Found iron flush, June 22, 1976.

Found a 3/4 in. iron pipe at grade, and tied, March 25, 1991. (City of Saint Paul Surveyor)

Construction Department destroyed monument, April, 1997.

Set a 20 in. cast iron monument +/-14 in. below finished grade; contractor to set 12 in. P.V.C. pipe and cast iron manhole assembly over monument, July 30, 1997.

Tied monument, March 23, 2001.

Retied monument, September 5, 2007.

Tied cast iron monument, November 30, 2009. (City of Saint Paul Surveyor)

Found a "Ramsey County" cast iron monument within a cast iron manhole assembly, checked condition of ties, October 3, 2012.