

# MONUMENT 441

## CERTIFICATE OF LOCATION OF GOVERNMENT CORNER

Southwest Corner of Section 17, Township 29 North, Range 23 West, County of Ramsey, State of Minnesota.

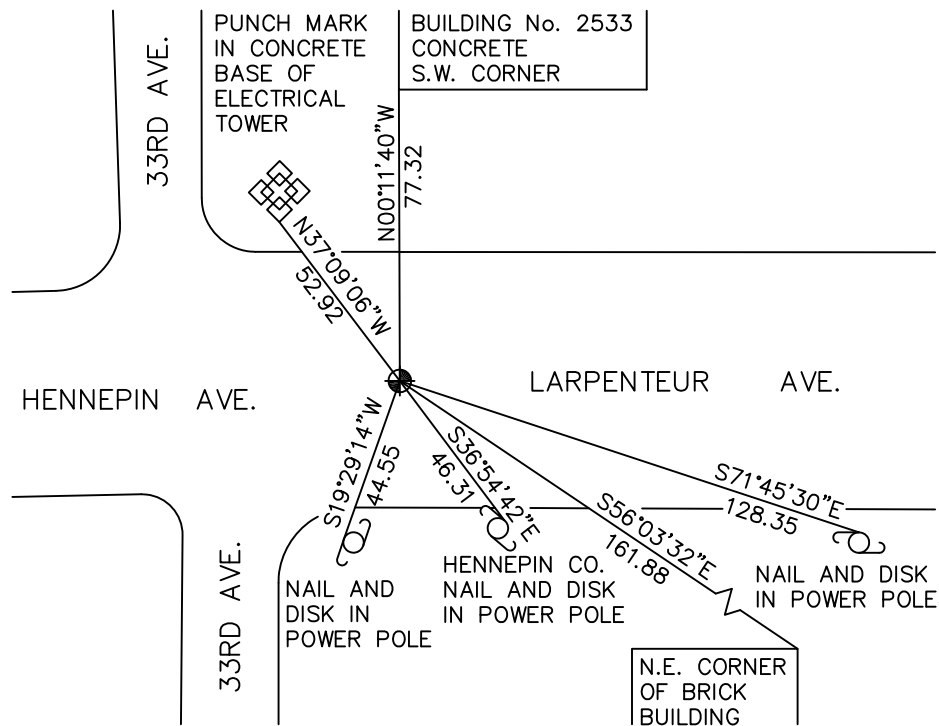
At the corner location shown on the sketch

On June 19, 2009 found a cast iron monument, down 2.0 feet.

left monument as found     lowered monument     removed monument (explain)

On \_\_\_\_\_ placed a \_\_\_\_\_

### SKETCH OF REFERENCE TIES



RAMSEY COUNTY  
NAD83 (1986)

MONUMENT 441

X= 545478.855 (Easting)  
Y= 173182.440 (Northing)

ALL DISTANCES ARE SHOWN IN U.S. SURVEY FEET.  
BEARINGS ARE FOR TIE REFERENCE PURPOSES ONLY.

Statements of evidence relative to this corner are on the following page(s).

I hereby certify that this document and the data contained herein was prepared by me or under my direct supervision this \_\_\_\_\_ day of \_\_\_\_\_, 20\_\_\_\_.

SIGNATURE

Minnesota License No. \_\_\_\_\_

- County Surveyor  
 Deputy County Surveyor     Land Surveyor

OFFICE OF COUNTY SURVEYOR

County of Ramsey

I hereby certify that this document was filed in the County Surveyor's office on the \_\_\_\_\_ day of \_\_\_\_\_, 20\_\_\_\_.

SIGNATURE

Michael D. Fiebiger, P.L.S.  
Ramsey County Surveyor

# MONUMENT 441

Found a cast iron monument, 1976.

Monument is in a valve box. Valve box is leaning; realigned box and City of Minneapolis is to place concrete around it, no date given in field book.

Checked monument, August 12, 1977.

Valve box leaning west can't see monument, March 23, 2001.

Valve box leaning west too far to set up over center of monument, July 25, 2006.

Tied monument, June 19, 2009.