

MONUMENT 439S

CERTIFICATE OF LOCATION OF GOVERNMENT CORNER

Witness Corner to Center of Section 13, Township 29 North, Range 22 West, County of Ramsey, State of Minnesota.

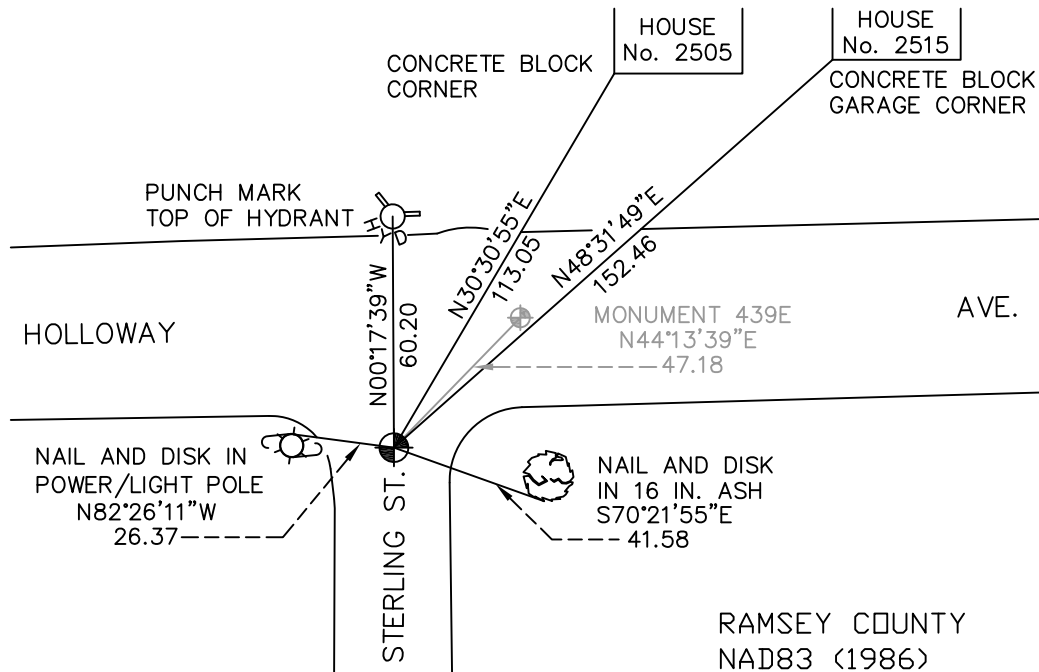
At the corner location shown on the sketch

On June 23, 2009 found a cast iron monument, within a cast iron manhole assembly.

left monument as found lowered monument removed monument (explain)

On _____ placed a _____

SKETCH OF REFERENCE TIES



ALL DISTANCES ARE SHOWN IN U.S. SURVEY FEET.
BEARINGS ARE FOR TIE REFERENCE PURPOSES ONLY.

Statements of evidence relative to this corner are on the following page(s).

I hereby certify that this document and the data contained herein was prepared by me or under my direct supervision this _____ day of _____, 20____.

SIGNATURE

Minnesota License No. _____

- County Surveyor
 Deputy County Surveyor Land Surveyor

OFFICE OF COUNTY SURVEYOR
County of Ramsey

I hereby certify that this document was filed in the County Surveyor's office on the _____ day of _____, 20____.

SIGNATURE

Michael D. Fiebiger, P.L.S.
Ramsey County Surveyor

MONUMENT 439S

Found a manhole at monument location; details of irons found to determine corner location in Survey Book No. 1; placed witness corner cast iron monument 33 ft. south. No date given in field book.

Retied monument, July, 1989.

Retied monument, October 18, 2000.

Set cast iron manhole assembly over monument and retied, August 24, 2004.

Retied monument, June 26, 2007.

Tied monument for removal during road construction, May 5, 2008.

Reset a 20 inch cast iron monument within a cast iron manhole assembly, July 21, 2008.

Retied monument, June 23, 2009.