

MONUMENT 437

CERTIFICATE OF LOCATION OF FOUND MONUMENT

Center of Section 14, Township 29 North, Range 22 West, County of Ramsey, State of Minnesota.

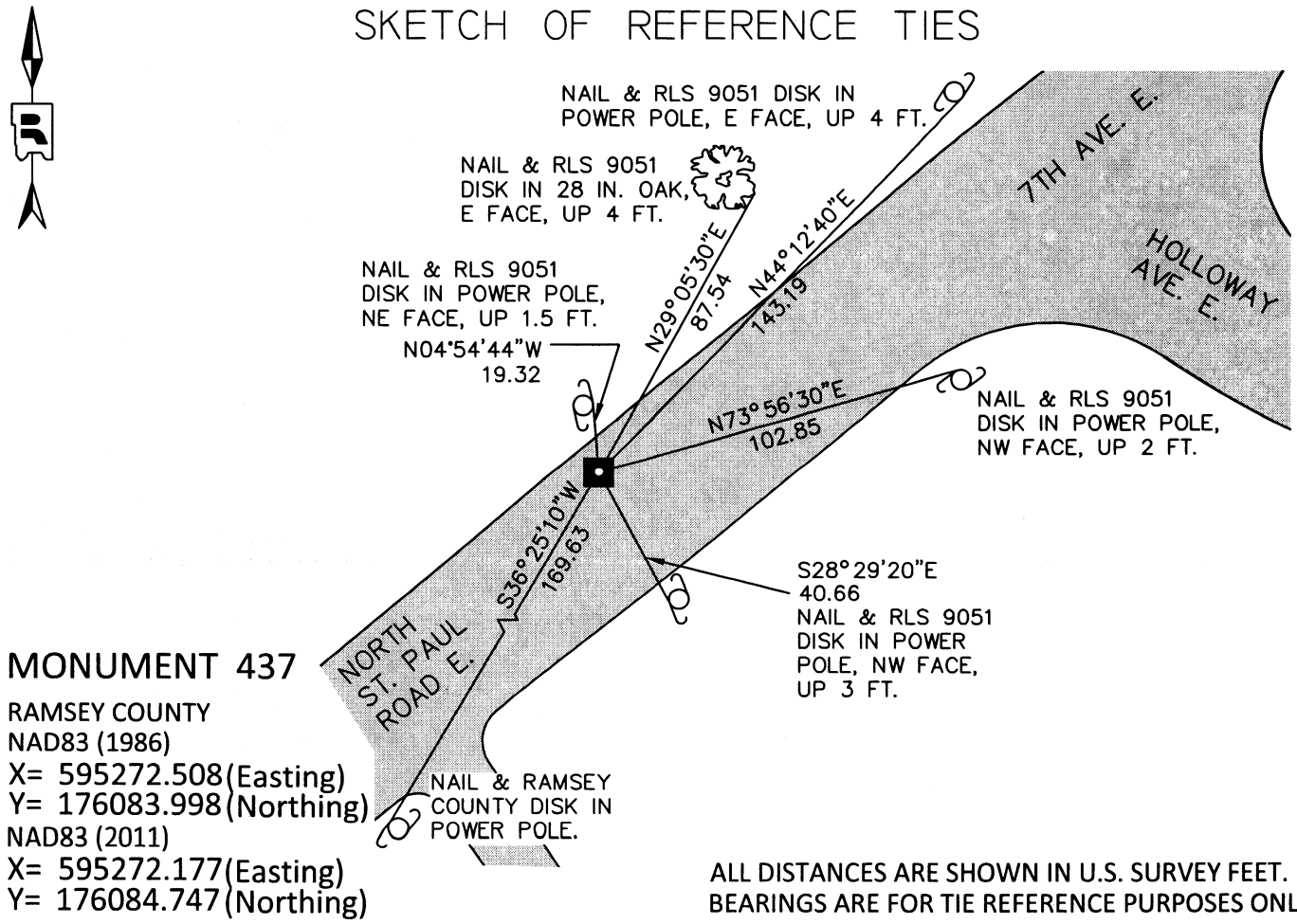
At the corner location shown on the sketch

On August 31, 2016 found a cast iron monument, down 0.25 feet. Removed cast iron monument to expose granite monument underneath; tied granite monument.

left monument as found
 raised/lowered monument
 removed monument (explain)

On August 31, 2016 placed a cast iron manhole assembly over granite monument in road surface.

SKETCH OF REFERENCE TIES



MONUMENT 437
 RAMSEY COUNTY
 NAD83 (1986)
 X= 595272.508 (Easting)
 Y= 176083.998 (Northing)
 NAD83 (2011)
 X= 595272.177 (Easting)
 Y= 176084.747 (Northing)

ALL DISTANCES ARE SHOWN IN U.S. SURVEY FEET.
 BEARINGS ARE FOR TIE REFERENCE PURPOSES ONLY.

Statements of evidence relative to this corner are on the following page.

I hereby certify that this survey, plan, or report was prepared by me or under my direct supervision, that I am a duly Licensed Land Surveyor under the laws of the state of Minnesota, and that this certificate is correct and complete to the best of my knowledge and belief.

Daniel D. Baar 10-4-16
 Daniel D. Baar Date
 Deputy County Surveyor
 Minnesota License No. 45816

OFFICE OF COUNTY SURVEYOR
 County of Ramsey

I hereby certify that this document was filed in the County Surveyor's office this 4th day of October, 2016.

Craig W. Hinzman
 Craig W. Hinzman, L.S.
 Ramsey County Surveyor

MONUMENT 437

Center of Section 14, Township 29 North, Range 22 West

August, 1900	Fixed the Center of Section 14 by Intersection and set monument. Ramsey County Resurvey
March 21, 1933	Found monument, down 1 foot. Ramsey County Engineer's Office
November, 1935	Raised monument. Ramsey County Engineer's Office
August, 1953	Set new ties. Ramsey County Engineer's Office
November 1, 1974	Found a granite monument down 3 inches at north edge of pavement and tied. Ramsey County Surveyor's Office
April 15, 2003	Retied granite monument. Ramsey County Surveyor's Office
June 15, 2009	Found a cast iron monument down 0.25 ft. and tied. The origin of the cast iron monument over the granite monument is unknown. It appears it was set to witness the the position of the granite monument at the road surface. Ramsey County Surveyor's Office
June 7, 2016	Tied cast iron monument for removal during road reconstruction. Ramsey County Surveyor's Office
August 31, 2016	Removed cast iron monument to expose granite monument underneath. Tied granite monument. Cast iron manhole assembly placed over monument by others. Ramsey County Surveyor's Office