

MONUMENT 436

CERTIFICATE OF LOCATION OF GOVERNMENT CORNER

East Quarter Corner of Section 15, Township 29 North, Range 22 West, County of Ramsey, State of Minnesota.

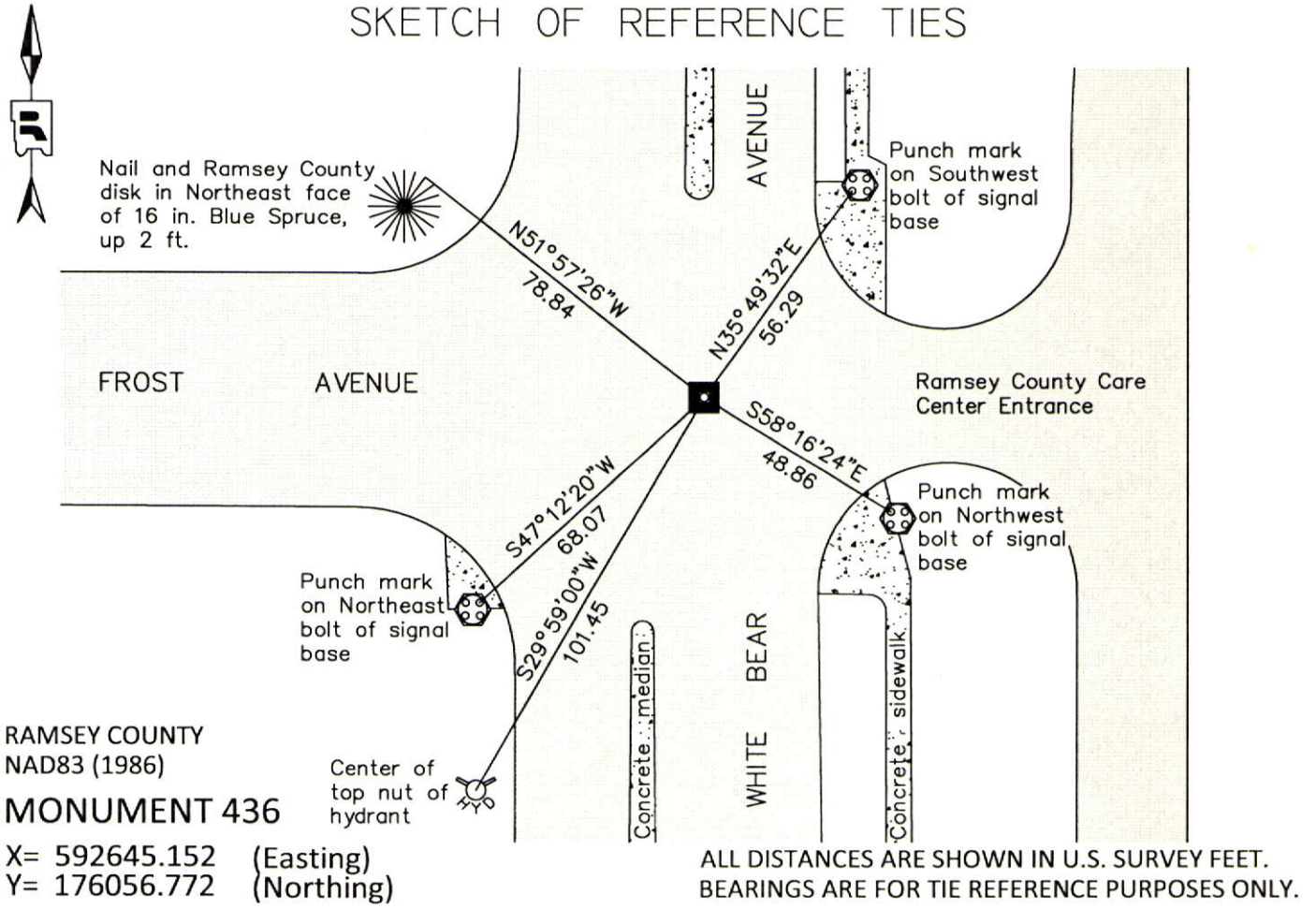
At the corner location shown on the sketch

On July 25, 2012 found an 8 in. x 8 in. granite monument, with a drill hole, within a cast iron manhole assembly.

left monument as found raised/lowered monument removed monument (explain)

On _____ placed a _____

SKETCH OF REFERENCE TIES



Statements of evidence relative to this corner are on the following page.

I hereby certify that this document was prepared by me or under my direct supervision and that I am a duly Licensed Land Surveyor under the laws of the State of Minnesota.

Daniel D. Baar 12-30-14
Daniel D. Baar Date
Minnesota License No. 45816

- County Surveyor Land Surveyor
 Deputy County Surveyor

OFFICE OF COUNTY SURVEYOR
County of Ramsey

I hereby certify that this document was filed in the County Surveyor's office this 30th day of December, 20 14.

Craig W. Hinzman
Craig W. Hinzman, L.S.
Ramsey County Surveyor

MONUMENT 436

East Quarter Corner of Section 15, Township 29 North, Range 22 West

Set 1/4 Section post, Burr Oak 8 S30°W 16, "Do" (Burr Oak) 14 N49°E 56, November 29, 1847.

The 1/4 Corner between Sections 14 and 15, found old stake, Government witness trees gone, set monument, 1895.

GARDEN ACRES plat shows a stone monument at described location, June 17, 1927.

EDGEVIEW plat shows an iron monument at described location, April 29, 1953.

Tied monument, December 8, 1960.

Found a cast iron monument flush, 1974.

Monument destroyed by White Bear Avenue construction project; placed a P.K. nail, December 5, 1983.

Set P.K. nails and tied, August 3, 1994.

Set a 20 in. cast iron monument, September, 1994.

Tied monument, November 6, 2002.

Cast iron monument removed for road milling project; found a granite monument and placed a cast iron manhole assembly over the granite monument, August 3, 2005.

Tied out granite monument, August 27, 2007.

Checked condition of granite monument within a cast iron manhole assembly and ties, July 25, 2012.