

MONUMENT 434

CERTIFICATE OF LOCATION OF GOVERNMENT CORNER

West Quarter Corner of Section 15, Township 29 North, Range 22 West, County of Ramsey, State of Minnesota.

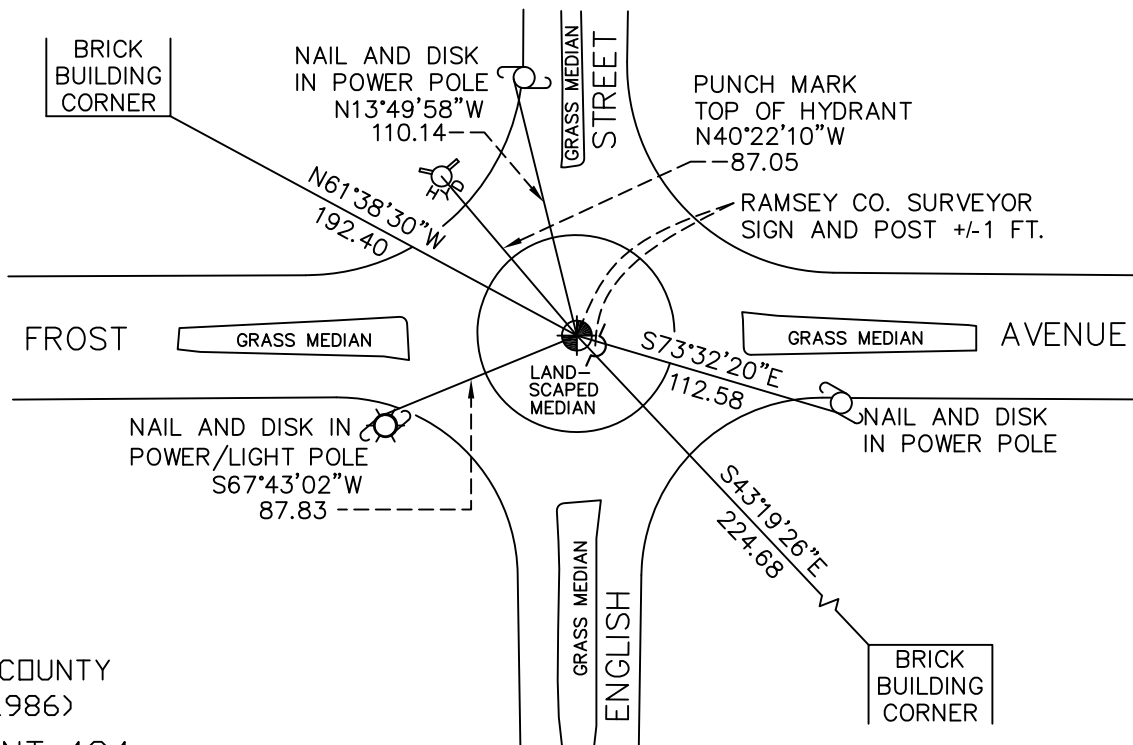
At the corner location shown on the sketch

On June 16, 2009 found a cast iron monument, within a cast iron manhole assembly.

left monument as found lowered monument removed monument (explain)

On _____ placed a _____

SKETCH OF REFERENCE TIES



RAMSEY COUNTY
NAD83 (1986)
MONUMENT 434

X= 587342.486 (Easting)
Y= 176073.703 (Northing)

ALL DISTANCES ARE SHOWN IN U.S. SURVEY FEET.
BEARINGS ARE FOR TIE REFERENCE PURPOSES ONLY.

Statements of evidence relative to this corner are on the following page(s).

I hereby certify that this document and the data contained herein was prepared by me or under my direct supervision this _____ day of _____, 20____.

SIGNATURE

Minnesota License No. _____

- County Surveyor
 Deputy County Surveyor Land Surveyor

OFFICE OF COUNTY SURVEYOR
County of Ramsey

I hereby certify that this document was filed in the County Surveyor's office on the _____ day of _____, 20____.

SIGNATURE

Michael D. Fiebiger, P.L.S.
Ramsey County Surveyor

MONUMENT 434

Found a 3/4 in. diameter, 0.9 ft., flush with surface; found a 3/4 in. diameter, 1.5 ft. long pipe, down 0.2 ft.; found a 3/4 in. diameter, 1 ft. long pipe, down 0.5 ft.; dug down 3.8 ft., found nothing, September 4, 1974.

Placed a cast iron monument, April 3, 1975.

Checked and tied monument, May 30, 1984.

Retied monument, October 19, 2000.

Tied out monument for City of Maplewood reconstruction, May 22, 2001.

Located position; set a 20 inch cast iron monument, down +/- 16 in.; tied; set a cast iron manhole assembly around monument and set sign and post, May 15, 2003.

Tied monument, June 16, 2009.