

MONUMENT 432

CERTIFICATE OF LOCATION OF GOVERNMENT CORNER

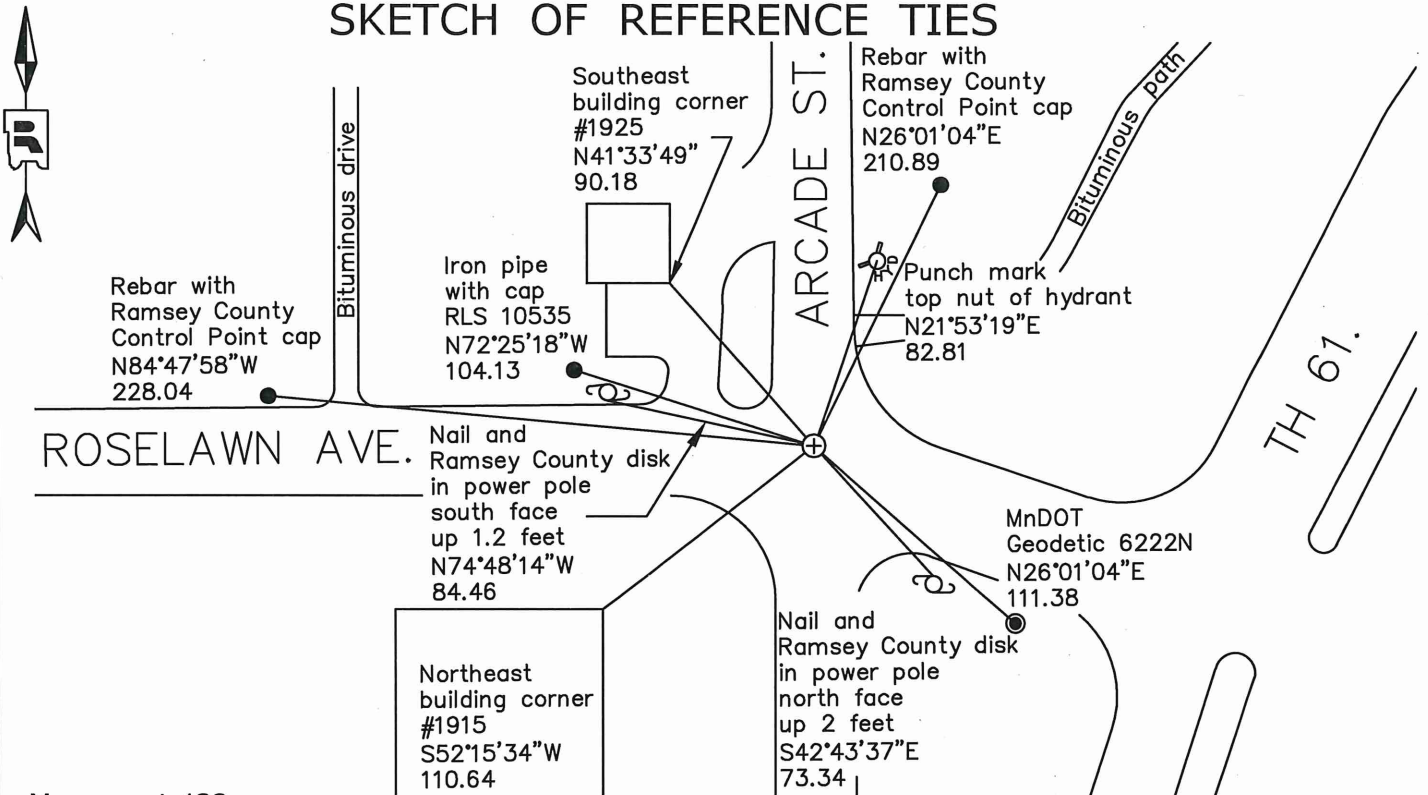
East 1/4 Corner of Section 17, Township 29 North, Range 22 West, County of Ramsey, State of Minnesota.

At the corner location shown on the sketch

On June 11, 2020 found a cast iron monument within a cast iron manhole assembly.

On April 5, 2021 placed a 5/8 inch by 14 inch rebar with 3 inch aluminum cap stamped " Ramsey County Surveyor".

SKETCH OF REFERENCE TIES



Monument 432
 Ramsey County
 NAD83 (1986) NAD83 (2011)
 Northing = 176031.809 Northing = 176032.38
 Easting = 582055.435 Easting = 582055.06

All distances are shown in U.S. Survey Feet.
 Bearings are for tie reference purposes only.

Statements of evidence relative to this corner are on the following page.

I hereby certify that this survey, plan, or report was prepared by me or under my direct supervision, that I am a duly Licensed Land Surveyor under the laws of the state of Minnesota, and that this certificate is correct and complete to the best of my knowledge and belief.

Devin R. Ball 11/10/22
 Devin R. Ball Date
 Deputy County Surveyor
 Minnesota License No. 56023

OFFICE OF COUNTY SURVEYOR
 County of Ramsey

I hereby certify that this document was filed in the County Surveyor's office this 10th day of January, 2022.

Daniel D. Baar
 Daniel D. Baar
 Ramsey County Surveyor
 Minnesota License No. 45816

MONUMENT 432

East 1/4 Corner of Section 17, Township 29, Range 22

November 27, 1847	North between Sections 16 and 17. At 40.00 chains set Quarter Section post. W. Oak 12 S55°E 13, W. Oak 14 S38°W 18. Isaac N. Higbee, Deputy Surveyor
December 12, 1898	In establishing the Quarter Corner between Sections 16 and 17, fixed from some old notes, found stake, Government trees gone. Ramsey County Resurvey
November 1899	Set monument. Ramsey County Resurvey
January 31, 1939	Found monument (boat spike) under concrete pavement and placed brass plug. Ramsey County Engineer's Office
August 1944	Checked monument. Ramsey County Engineer's Office
October 1952	New ties from state. Ramsey County Engineer's Office
October 16, 1962	Set a cast iron monument, flush with road surface, which was evidenced by ties from Maplewood tie book and iron pipe in place. Warren I. Forsberg, L.S. 4840. Certificate of Location of Government Corner dated December 27, 1962
September 6, 1974	Found a cast iron monument, flush and retied. Ramsey County Surveyor's Office
May 1992	Removed monument. Ramsey County Surveyor's Office
October 13, 1992	Placed a 20 inch cast iron monument. Ramsey County Surveyor's Office
November 6, 2002	Retied monument. Ramsey County Surveyor's Office
August 2006	Concrete maintenance around monument. Ramsey County Surveyor's Office
April 9, 2008	Retied monument. Ramsey County Surveyor's Office
August 22, 2012	Tied out monument for removal during road reconstruction project by the City of Maplewood. Ramsey County Surveyor's Office
September 7, 2012	Set a 20 inch Ramsey County cast iron monument within a cast iron manhole assembly and tied. Ramsey County Surveyor's Office
June 15, 2017	Found a cast iron monument within a cast iron manhole assembly and inspected local ties. Ramsey County Surveyor's Office

MONUMENT 432

East 1/4 Corner of Section 17, Township 29, Range 22

June 11, 2020

Found a cast iron monument in a within a cast iron manhole assembly. Established offsets and checked local ties prior to removal during road construction.

Ramsey County Surveyor's Office

April 5, 2021

Placed a 5/8 inch by 14 inch rebar with 3 inch aluminum cap stamped "Ramsey County Surveyor" following road construction using offsets. Recorded local ties.

Ramsey County Surveyor's Office