

MONUMENT 43

CERTIFICATE OF LOCATION OF SECTION SUBDIVISION MONUMENT

Center of Section 4, Township 30 North, Range 22 West, County of Ramsey, State of Minnesota.

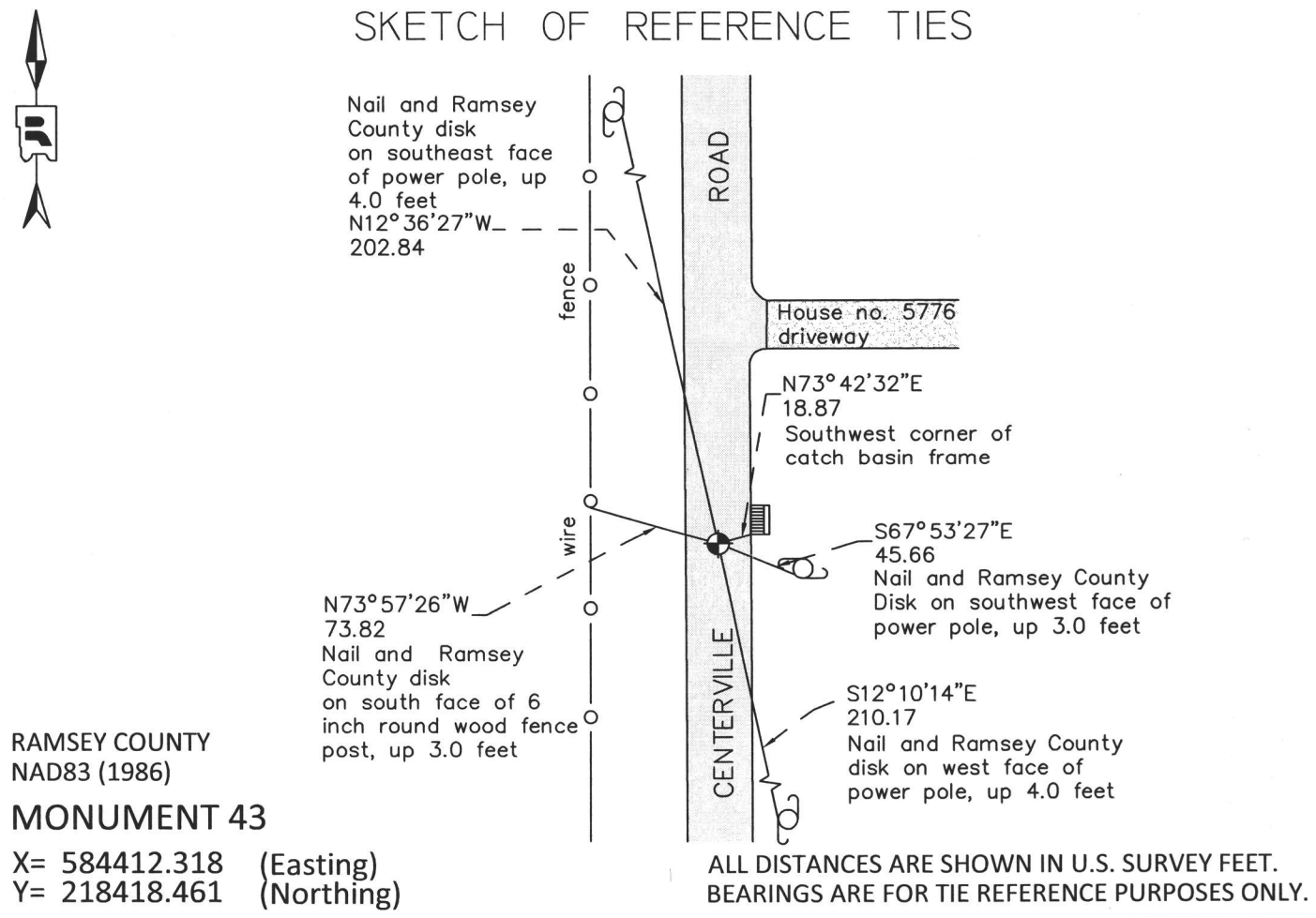
At the corner location shown on the sketch

On May 21, 2014 found a cast iron monument in bituminous road, tied for removal during road construction.

left monument as found raised/lowered monument removed monument (explain)

On July 8, 2014 placed a new 20 inch "Ramsey County" cast iron monument within a cast iron manhole assembly; tied.

SKETCH OF REFERENCE TIES



Statements of evidence relative to this corner are on the following page.

I hereby certify that this survey, plan, or report was prepared by me or under my direct supervision, that I am a duly Licensed Land Surveyor under the laws of the state of Minnesota, and that this certificate is correct and complete to the best of my knowledge and belief.

Daniel D. Baar 6-5-15
Daniel D. Baar Date
Deputy County Surveyor
Minnesota License No. 45816

OFFICE OF COUNTY SURVEYOR
County of Ramsey

I hereby certify that this document was filed in the County Surveyor's office this 5th day of June, 20 15.

Craig W. Hinzman
Craig W. Hinzman, L.S.
Ramsey County Surveyor

MONUMENT 43

Center of Section 4, Township 30, Range 22

January 27, 1910	In establishing the Center of Section 4, ran north and south quarter line and set Corner 2,640 feet north of the Quarter Corner between Section 4 and Section 9, fixed corner, Ramsey County Resurvey.
May 15, 1974	Found a granite monument, down 0.3 feet, Ramsey County Surveyor's Office.
May 17, 1974	Placed a cast iron cap and bolt on top of granite monument, Ramsey County Surveyor's Office.
July 3, 1974	Retied monument, Ramsey County Surveyor's Office.
1989	Monument destroyed by Construction Department, Ramsey County Surveyor's Office.
November 24, 1992	Set a 20 inch cast iron monument, Ramsey County Surveyor's Office.
January 25, 1993	Retied monument, Ramsey County Surveyor's Office.
November 15, 1999	Retied monument, Ramsey County Surveyor's Office.
July 12, 2004	Retied monument, Ramsey County Surveyor's Office.
July 27, 2009	Retied monument, Ramsey County Surveyor's Office.
May 21, 2014	Tied monument for removal during road reconstruction, also checked local ties, Ramsey County Surveyor's Office.
July 8, 2014	Set a new 20 inch "Ramsey County" cast iron monument within a cast iron manhole assembly using construction offsets; tied, Ramsey County Surveyor's Office.