

MONUMENT 429

CERTIFICATE OF LOCATION OF FOUND MONUMENT

Center of Section 18, Township 29 North, Range 22 West, County of Ramsey, State of Minnesota.

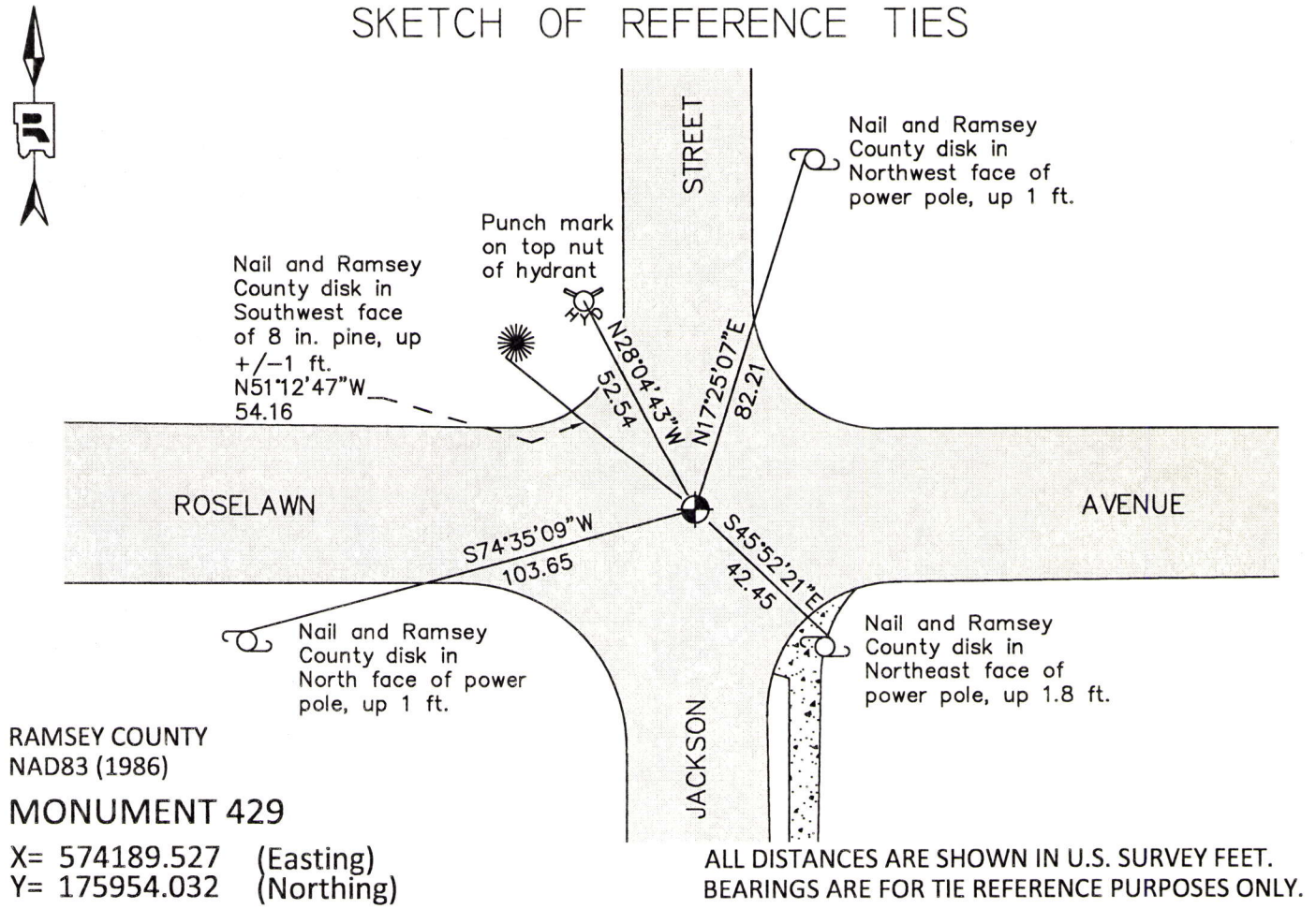
At the corner location shown on the sketch

On September 5, 2012 found a "Ramsey County" cast iron monument flush in bituminous road.

left monument as found raised/lowered monument removed monument (explain)

On September 5, 2012 lowered "Ramsey County" cast iron monument 8 in., then set a cast iron manhole assembly over top.

SKETCH OF REFERENCE TIES



Statements of evidence relative to this corner are on the following page.

I hereby certify that this document was prepared by me or under my direct supervision and that I am a duly Licensed Land Surveyor under the laws of the State of Minnesota.

Daniel D. Baar 11-19-14
Daniel D. Baar Date
Minnesota License No. 45816

County Surveyor Land Surveyor
 Deputy County Surveyor

OFFICE OF COUNTY SURVEYOR
County of Ramsey

I hereby certify that this document was filed in the County Surveyor's office this 19th day of November, 20 14.

Craig W. Hinzman
Craig W. Hinzman, L.S.
Ramsey County Surveyor

MONUMENT 429

Center of Section 18, Township 29 North, Range 22 West

Fixed the Center of Section 18 by intersection, September 1, 1900.

Set monument, September, 1900.

Monument out, November, 1933.

Replaced monument from ties, November 15, 1933.

Checked monument, August, 1944.

Raised monument, August 18, 1950.

JAMES 1ST ADDITION plat shows a stone monument at Center of Section 18, June 22, 1954.

Found a cast iron monument down 6 in. and reset to grade, June 1, 1976.

Tied monument, August 17, 1984.

Monument removed for Construction Department; set a P.K. nail for position after construction, September 29, 1992.

Set a 20 in. cast iron monument, October 13, 1992.

Cemented monument in place, October 20, 1993.

Tied monument, July 8, 2002.

Retied monument, August 9, 2007.

Tied existing "Ramsey County" cast iron monument, flush, for removal during road reconstruction, August 22, 2012.

Lowered existing 20 in. cast iron monument +/-8 in. below finished grade, set cast iron manhole assembly over cast iron monument; tied, September 5, 2012.