

# MONUMENT 426

## CERTIFICATE OF LOCATION OF FOUND MONUMENT

East Quarter Corner of Section 14, Township 29 North, Range 23 West, County of Ramsey, State of Minnesota.

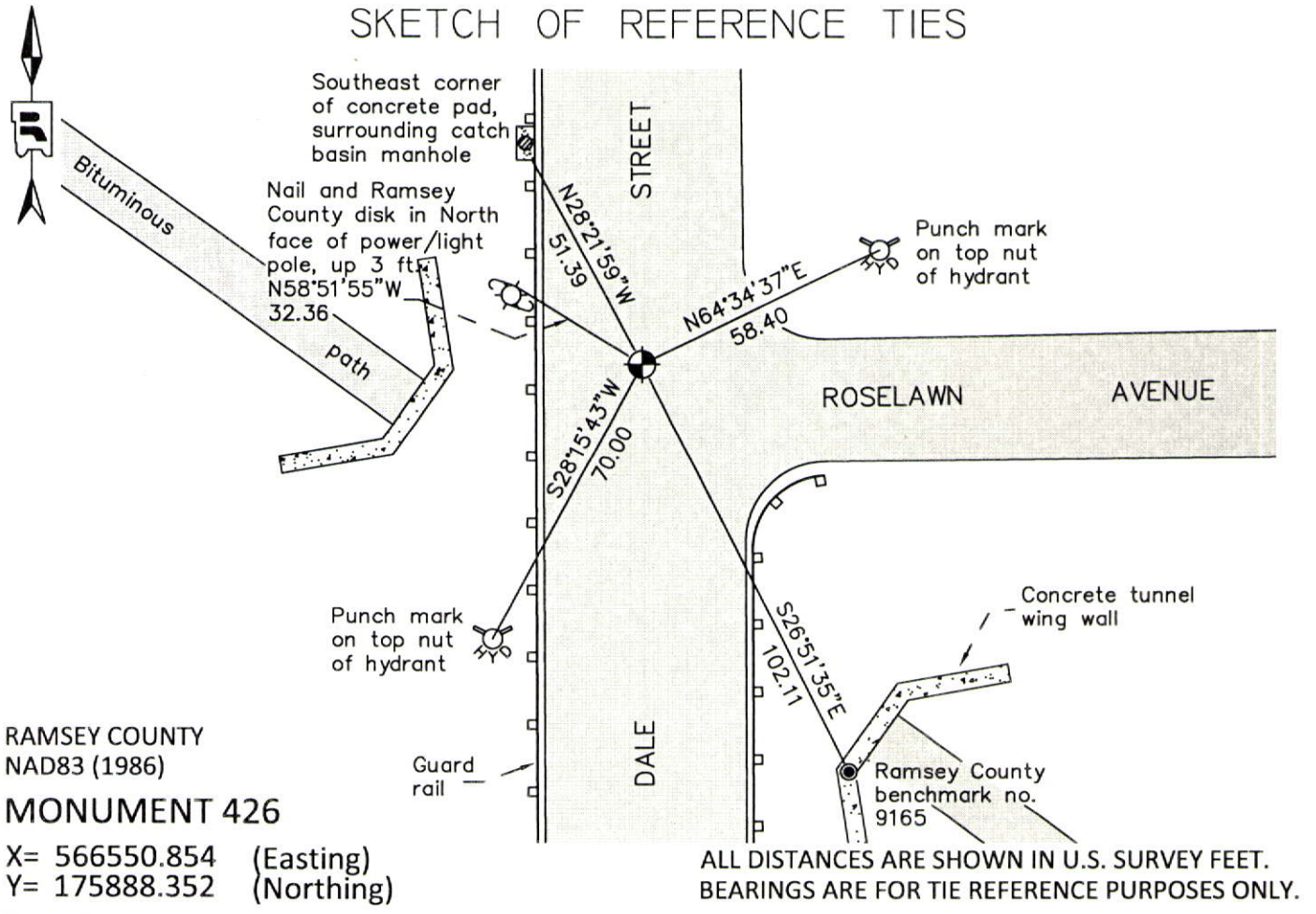
At the corner location shown on the sketch

On October 3, 2012 found a "Ramsey County" cast iron monument in a cast iron manhole assembly.

left monument as found       raised/lowered monument       removed monument (explain)

On \_\_\_\_\_ placed a \_\_\_\_\_

### SKETCH OF REFERENCE TIES



RAMSEY COUNTY  
NAD83 (1986)  
**MONUMENT 426**

X= 566550.854 (Easting)  
Y= 175888.352 (Northing)

Statements of evidence relative to this corner are on the following page.

I hereby certify that this document was prepared by me or under my direct supervision and that I am a duly Licensed Land Surveyor under the laws of the State of Minnesota.

Daniel D. Baar      12-30-14  
Daniel D. Baar      Date  
Minnesota License No. 45816

- County Surveyor       Land Surveyor  
 Deputy County Surveyor

OFFICE OF COUNTY SURVEYOR  
County of Ramsey

I hereby certify that this document was filed in the County Surveyor's office this 30th day of December, 20 14.

Craig W. Hinzman  
Craig W. Hinzman, L.S.  
Ramsey County Surveyor

# MONUMENT 426

East Quarter Corner of Section 14, Township 29 North, Range 23 West

Set 1/4 Section post, B. Oak 8 S16°E 57, "Do" (B. Oak) 9 S15°W 53,  
November 3, 1847.

The 1/4 Corner between Sections 13 and 14 was fixed by Gates A. Johnson in 1888;  
retied it and set monument, May 1897.

Checked monument, March, 1954.

Found a cast iron monument flush and tied, October 4, 1974.

Checked monument, July 29, 1977.

CONNELLY HEIGHTS plat shows a cast iron monument at location, March 16, 1979.

Set a 20 in. cast iron monument and pipe, June, 2000.

Set a cast iron manhole assembly and 12 in. pipe, August 15, 2000.

Tied monument, July 12, 2002.

Retied monument, August 9, 2007.

Found "Ramsey County" cast iron monument within a cast iron manhole assembly;  
checked condition of ties, October 3, 2012.