

MONUMENT 425

CERTIFICATE OF LOCATION OF SECTION SUBDIVISION MONUMENT

Center of Section 14, Township 29 North, Range 23 West, County of Ramsey, State of Minnesota.

At the corner location shown on the sketch

SEE NOTE ON SKETCH

On June 20, 2011 found a cast iron monument, down 0.25 ft.

left monument as found raised/lowered monument removed monument (explain)

On _____ placed a _____

SKETCH OF REFERENCE TIES

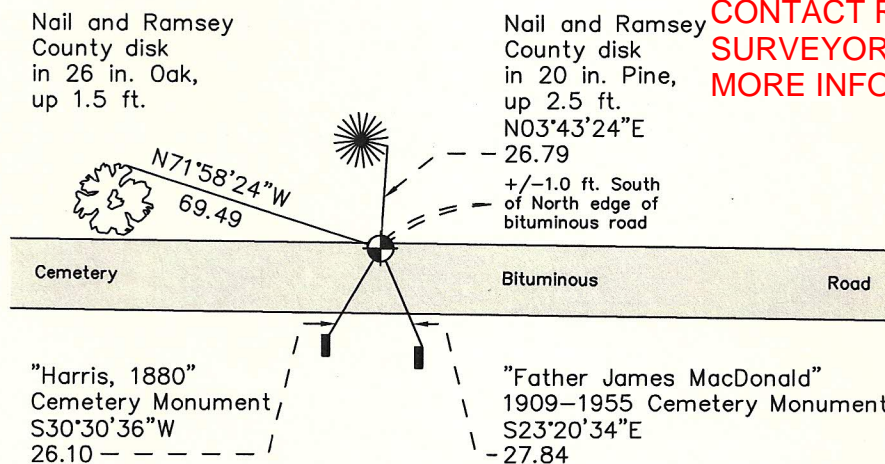
12-22-15

**CAST IRON MONUMENT
POSITION DISTURBED.**

**CONTACT RAMSEY COUNTY
SURVEYOR'S OFFICE FOR
MORE INFORMATION.**



ROSELAWN CEMETERY



RAMSEY COUNTY
NAD83 (1986)

ROSELAWN CEMETERY

MONUMENT 425

X= 563915.418 (Easting)
Y= 175928.021 (Northing)

ALL DISTANCES ARE SHOWN IN U.S. SURVEY FEET.
BEARINGS ARE FOR TIE REFERENCE PURPOSES ONLY.

Statements of evidence relative to this corner are on the following page.

I hereby certify that this document was prepared by me or under my direct supervision and that I am a duly Licensed Land Surveyor under the laws of the State of Minnesota.

Daniel D. Baar 8-15-12
Daniel D. Baar Date
Minnesota License No. 45816

County Surveyor Land Surveyor
 Deputy County Surveyor

OFFICE OF COUNTY SURVEYOR
County of Ramsey

I hereby certify that this document was filed in the County Surveyor's office this 15th day of August, 20 12.

Craig W. Hinzman
Craig W. Hinzman, L.S.
Ramsey County Surveyor

MONUMENT 425

Center of Section 14, Township 29 North, Range 23 West

Fixed the Center of Section 14 by intersection, set monument November 10, 1897.

Found a granite monument down 5 in. and tied, October 4, 1974.

Placed a 5 in. cast iron monument, November 20, 1974.

Checked monument, July 29, 1977.

Tied monument, August 10, 1999.

Retied monument, July 11, 2006.

Retied cast iron monument, down 0.25 ft., June 20, 2011.

December 22, 2015 Located monument in Bituminous Road. Monument under tree cover; set up two static session points southerly of monument. Used two static points to turn angles and distances into cast iron monument. Used static data along with angles and distances observed in the field to obtain 2011 coordinates on monument. Monument shift between published NAD83 (1986 Adj.) and NAD83 (2011 Adj.) did not follow trends. Checked this with County Traverse Data. Traverse data confirms monument has been disturbed. County will locate granite monument under cast iron monument in Spring 2016. For information on this monument, contact Chris Terwedo (651-266-7178) or Dan Baar (651-266-7170) at the Ramsey County Surveyor's Office