

MONUMENT 423

CERTIFICATE OF LOCATION OF SECTION SUBDIVISION MONUMENT

Center of Section 15, Township 29 North, Range 23 West, County of Ramsey, State of Minnesota.

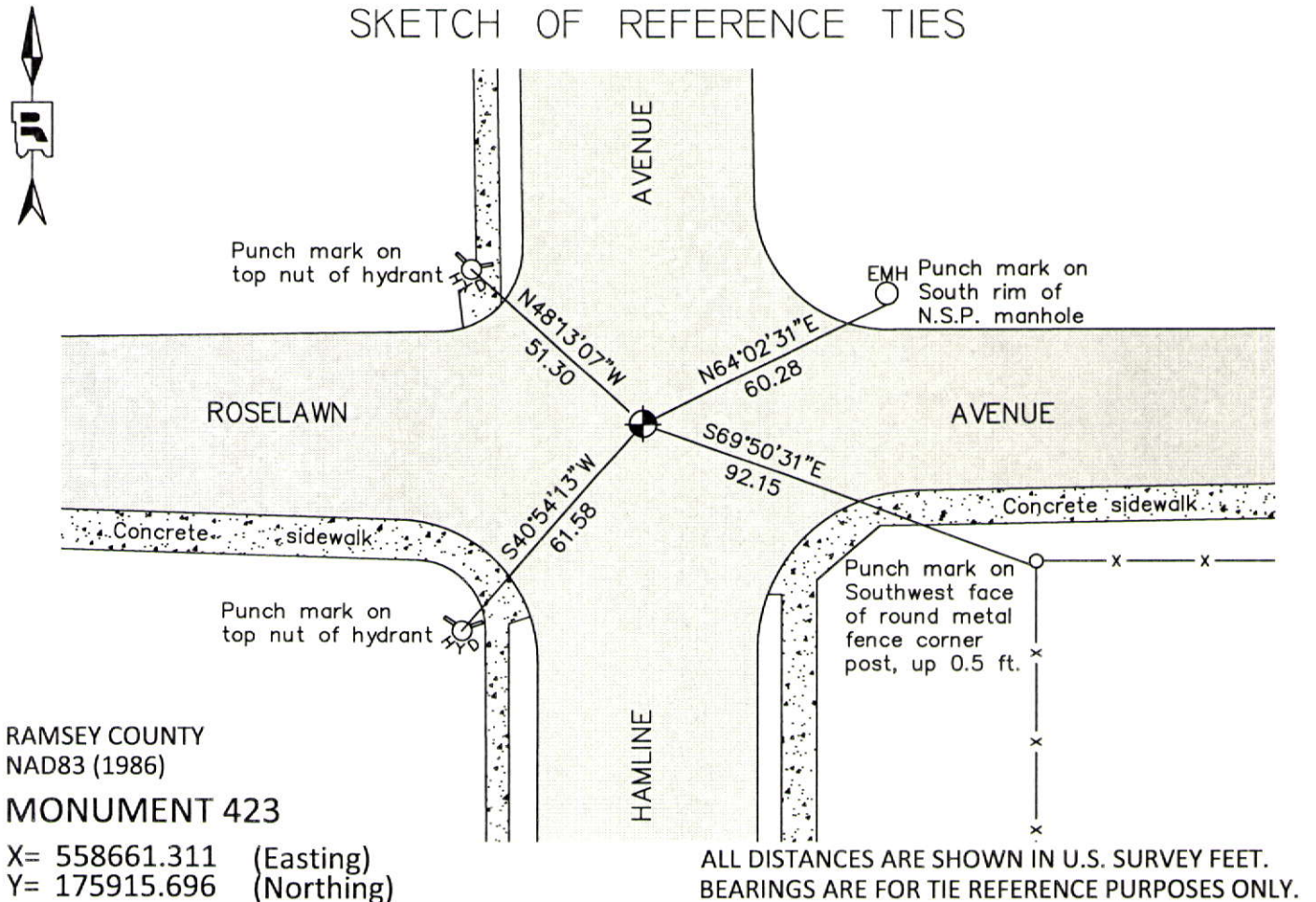
At the corner location shown on the sketch

On June 21, 2012 found a "Ramsey County" cast iron monument, down 0.05 ft. in bituminous road.

left monument as found raised/lowered monument removed monument (explain)

On _____ placed a _____

SKETCH OF REFERENCE TIES



RAMSEY COUNTY
NAD83 (1986)
MONUMENT 423

X= 558661.311 (Easting)
Y= 175915.696 (Northing)

Statements of evidence relative to this corner are on the following page.

I hereby certify that this document was prepared by me or under my direct supervision and that I am a duly Licensed Land Surveyor under the laws of the State of Minnesota.

Daniel D. Baar 12-14-14
Daniel D. Baar Date
Minnesota License No. 45816

County Surveyor Land Surveyor
 Deputy County Surveyor

OFFICE OF COUNTY SURVEYOR
County of Ramsey

I hereby certify that this document was filed in the County Surveyor's office this 14th day of December, 20 14.

Craig W. Hinzman
Craig W. Hinzman, L.S.
Ramsey County Surveyor

MONUMENT 423

Center of Section 15, Township 29 North, Range 23 West

Fixed the Center of Section 15 by intersection, November 11, 1897, May 9, 1898.

DIETRICH'S HOMESITES plat shows a stone monument at location, January 19, 1933.

Tied monument, March 1, 1963.

Checked monument, October, 1966.

Found a 3/4 in. diameter, 22 in. long, solid iron, down 0.1 ft.; dug down 2 ft. and found a granite monument lying completely on its side; replaced solid iron with a cast iron monument, August 20, 1974.

Checked cast iron monument and adjusted it to existing irons, August 22, 1974.

Retied monument, January 27, 1975.

Monument checked, July 29, 1977.

Monument removed and replaced for Roselawn Avenue road maintenance, 1988.

Tied out monument for removal during reconstruction of Hamline Avenue, April 24, 1990.

Placed P.K. nails and checked location; tied out location, June 23, 1992.

Set a 20 in. cast iron monument, October 14, 1992.

Tied monument, July 19, 2002.

Retied monument, August 7, 2007.

Checked condition of cast iron monument, down 0.05 ft. in bituminous road, and ties, June 21, 2012.