

MONUMENT 420

CERTIFICATE OF LOCATION OF GOVERNMENT CORNER

East Quarter Corner of Section 17, Township 29 North, Range 23 West, County of Ramsey, State of Minnesota.

At the corner location shown on the sketch

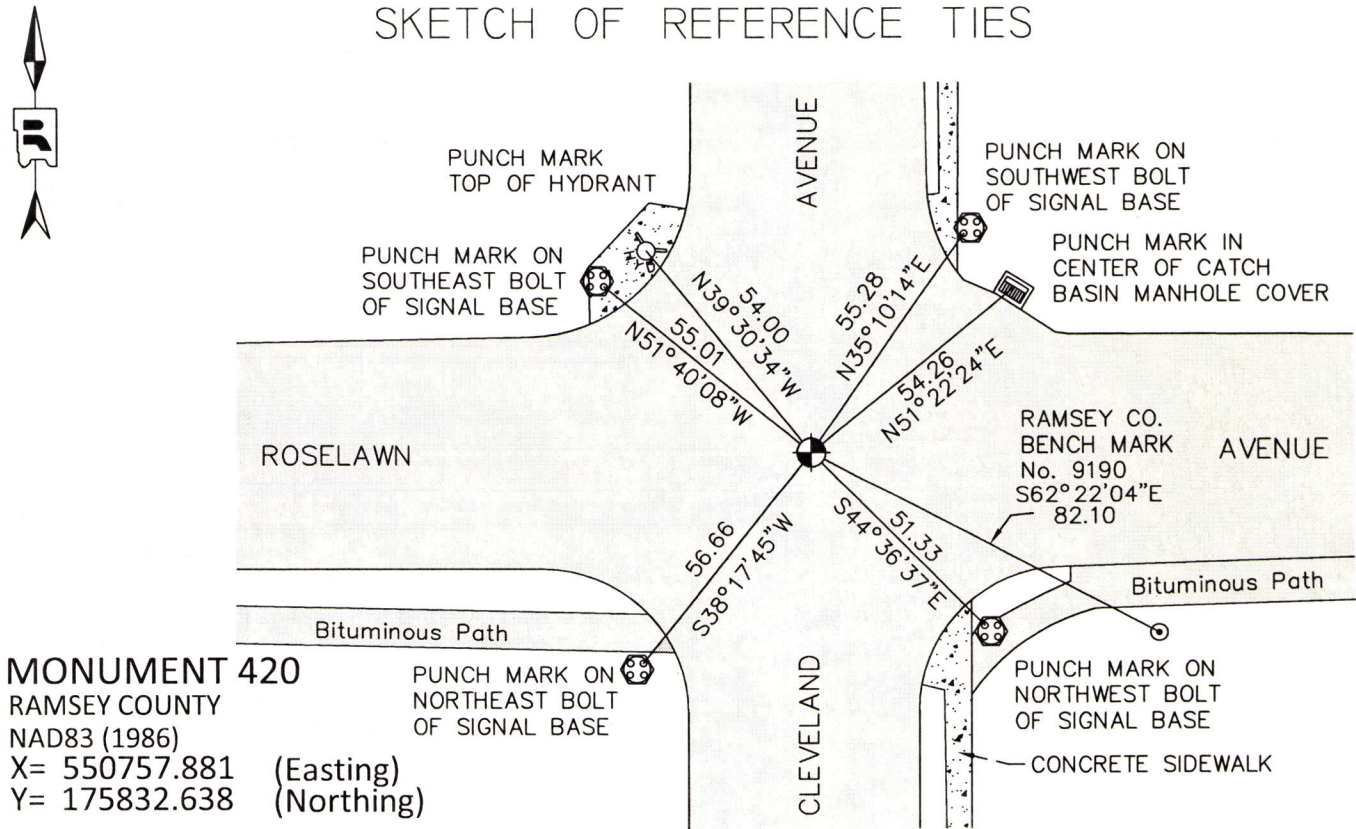
On May 5, 2015 found a cast iron monument, flush; tied for removal during road construction.

left monument as found raised/lowered monument removed monument (explain)

On August 5, 2015 placed a 20 inch Ramsey County cast iron monument; tied.

Cast iron manhole assembly set by others.

SKETCH OF REFERENCE TIES



MONUMENT 420
 RAMSEY COUNTY
 NAD83 (1986)
 X= 550757.881 (Easting)
 Y= 175832.638 (Northing)

RAMSEY COUNTY
 NAD83 (2011)
 X= 550757.558 (Easting)
 Y= 175833.270 (Northing)

ALL DISTANCES ARE SHOWN IN U.S. SURVEY FEET.
 BEARINGS ARE FOR TIE REFERENCE PURPOSES ONLY.

Statements of evidence relative to this corner are on the following page.

I hereby certify that this survey, plan, or report was prepared by me or under my direct supervision, that I am a duly Licensed Land Surveyor under the laws of the state of Minnesota, and that this certificate is correct and complete to the best of my knowledge and belief.

Daniel D. Baar 3-7-16
 Daniel D. Baar Date
 Deputy County Surveyor
 Minnesota License No. 45816

OFFICE OF COUNTY SURVEYOR
 County of Ramsey

I hereby certify that this document was filed in the County Surveyor's office this 7th day of March, 2016.

Craig W. Hinzman
 Craig W. Hinzman, L.S.
 Ramsey County Surveyor

MONUMENT 420

East Quarter Corner of Section 17, Township 29 North, Range 23 West

November 3, 1847	Set Quarter Section post; Bur Oak 15 N33E 1.68. Isaac Higbee, Deputy Surveyor
August, 1899	The Quarter Corner Between 16 and 17 was found as a Boulder Monument. Retied it and set monument. Ramsey County Resurvey
January, 1966	Found Granite monument. Ramsey County Engineering Office
June 22, 1976	Found a nail at surface. Granite monument down 0.58 ft. Ramsey County Surveyor's Office
July 29, 1977	Checked monument. Ramsey County Surveyor's Office
August 4, 1977	Set a short cast iron monument. Ramsey County Surveyor's Office
August 12, 1984	Tied monument. Ramsey County Surveyor's Office
May 12, 1989	Retied monument. Ramsey County Surveyor's Office
April 9, 1993	Removed short cast iron monument for Construction Department for Cleveland Avenue. Ramsey County Surveyor's Office
August 3, 1994	Relocated position and set P.K. nails and tied. Ramsey County Surveyor's Office
October, 1994	Set a 20 inch cast iron monument. Ramsey County Surveyor's Office
August 18, 2003	Tied monument, found flush. Ramsey County Surveyor's Office
June 18, 2009	Retied monument. Ramsey County Surveyor's Office
May 5, 2015	Tied monument for removal during road reconstruction. Ramsey County Surveyor's Office
August 5, 2015	Set new 20 inch "Ramsey County" cast iron monument and tied out. Manhole assembly to be set by others. Ramsey County Surveyor's Office