

# MONUMENT 419

## CERTIFICATE OF LOCATION OF FOUND MONUMENT

Center of Section 17, Township 29 North, Range 23 West, County of Ramsey, State of Minnesota.

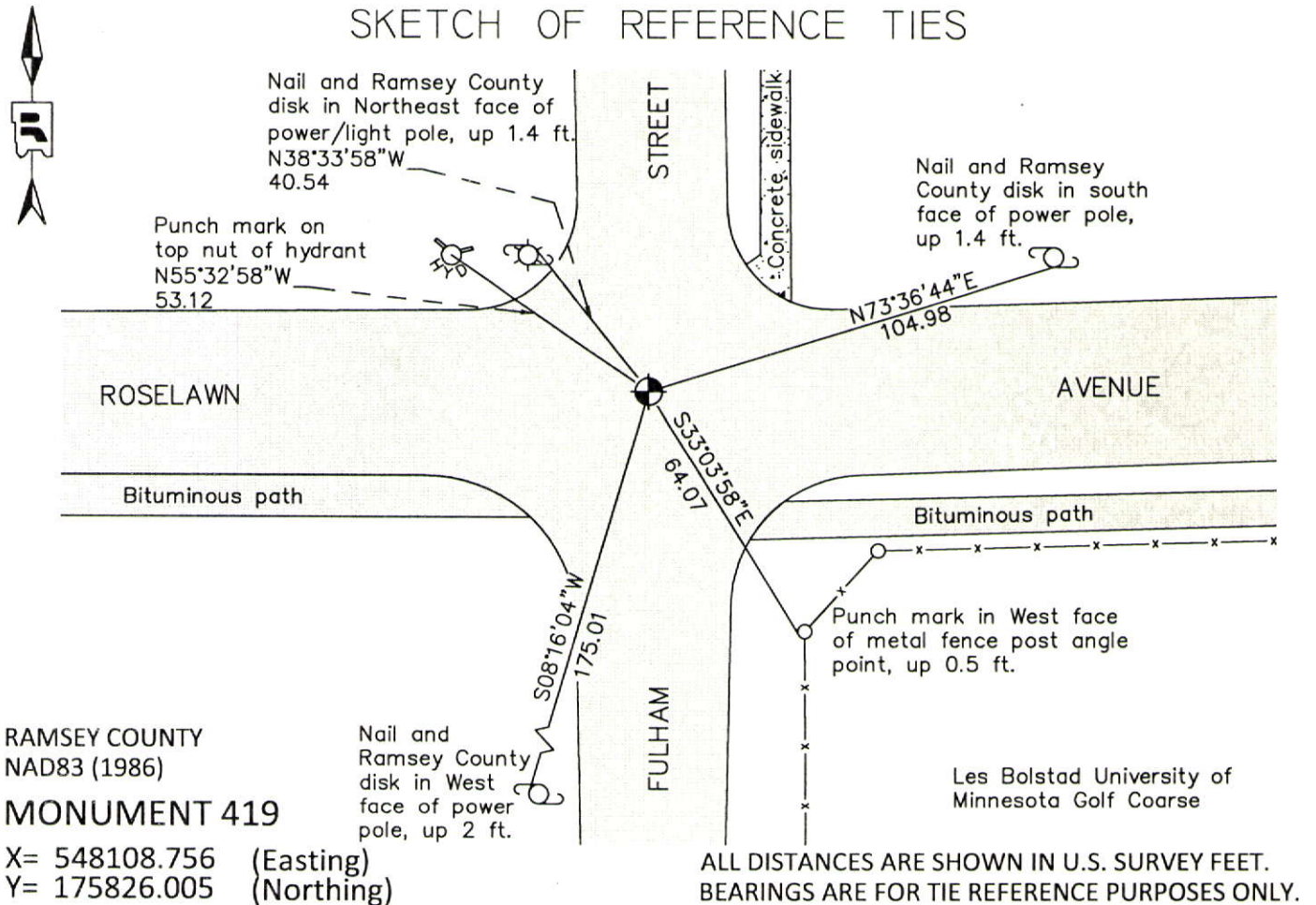
At the corner location shown on the sketch

On June 21, 2012 found a "Ramsey County" cast iron monument within a cast iron manhole assembly.

left monument as found       raised/lowered monument       removed monument (explain)

On \_\_\_\_\_ placed a \_\_\_\_\_

### SKETCH OF REFERENCE TIES



RAMSEY COUNTY  
NAD83 (1986)  
**MONUMENT 419**

X= 548108.756 (Easting)  
Y= 175826.005 (Northing)

Statements of evidence relative to this corner are on the following page.

I hereby certify that this document was prepared by me or under my direct supervision and that I am a duly Licensed Land Surveyor under the laws of the State of Minnesota.

Daniel D. Baar      12-30-14  
Daniel D. Baar      Date  
Minnesota License No. 45816

County Surveyor  
 Deputy County Surveyor       Land Surveyor

OFFICE OF COUNTY SURVEYOR  
County of Ramsey

I hereby certify that this document was filed in the County Surveyor's office this 30th day of December, 20 14.

Craig W. Hinzman  
Craig W. Hinzman, L.S.  
Ramsey County Surveyor

# MONUMENT 419

Center of Section 17, Township 29 North, Range 23 West

Fixed the Center of Section 17 by intersection and set monument,  
December 18, 1899.

Found a cast iron monument flush and tied, July 31, 1974.

Checked monument, July 29, 1977.

Monument removed by construction, 1987.

Relocated monument position and tied out, May 12, 1989.

Set a 20 in. cast iron monument, June 2, 1989.

Tied monument, flush, October 30, 2002.

Found a cast iron monument within a cast iron manhole assembly and retied,  
August 9, 2007.

Checked cast iron monument in cast iron manhole assembly and ties, June 21, 2012.