

MONUMENT 414

CERTIFICATE OF LOCATION OF GOVERNMENT CORNER

North Quarter Corner of Section 14, Township 29 North, Range 22 West, County of Ramsey, State of Minnesota.

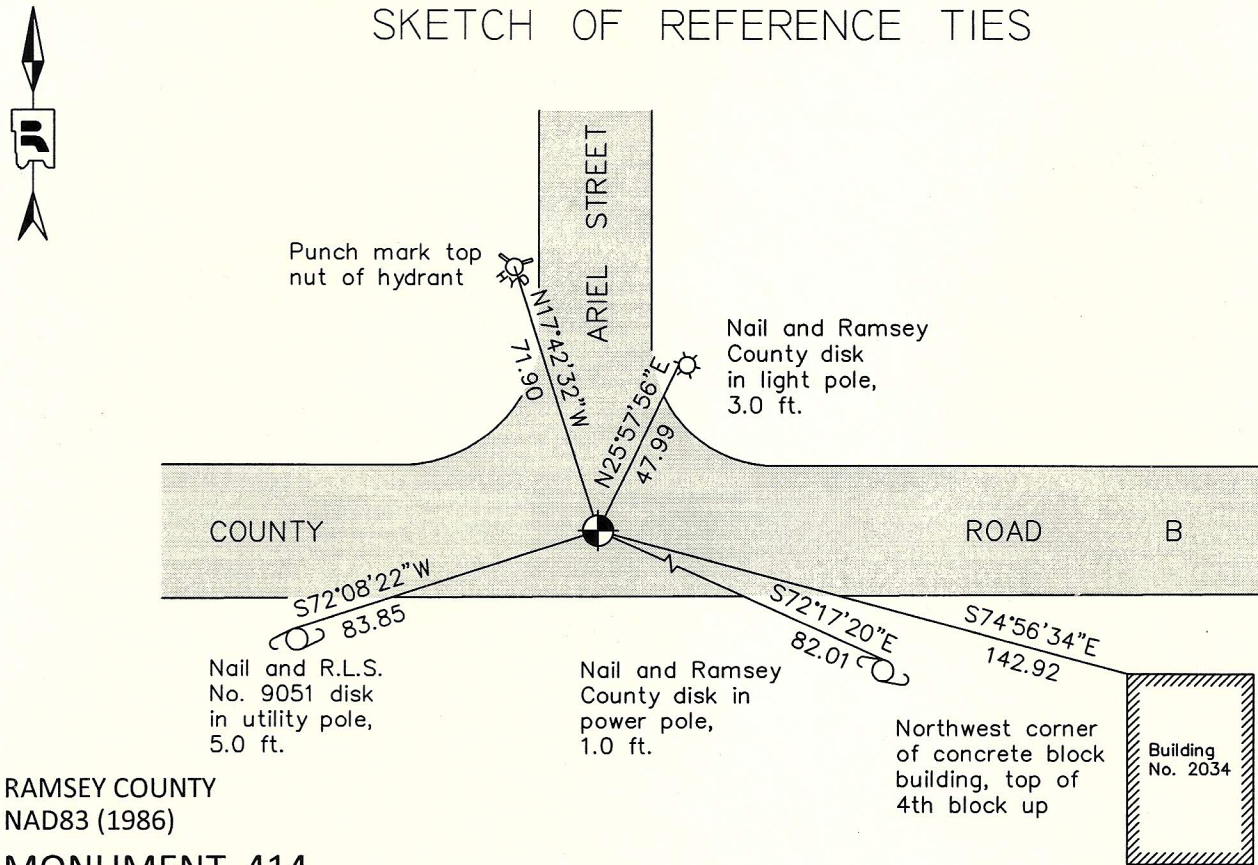
At the corner location shown on the sketch

On June 24, 2011 found a cast iron monument, within a cast iron manhole assembly.

left monument as found raised/lowered monument removed monument (explain)

On _____ placed a _____

SKETCH OF REFERENCE TIES



ALL DISTANCES ARE SHOWN IN U.S. SURVEY FEET.
BEARINGS ARE FOR TIE REFERENCE PURPOSES ONLY.

Statements of evidence relative to this corner are on the following page.

I hereby certify that this document was prepared by me or under my direct supervision and that I am a duly Licensed Land Surveyor under the laws of the State of Minnesota.

Daniel D. Baar 8-15-12
Daniel D. Baar Date
Minnesota License No. 45816

- County Surveyor
 Deputy County Surveyor Land Surveyor

OFFICE OF COUNTY SURVEYOR
County of Ramsey

I hereby certify that this document was filed in the County Surveyor's office this 15th day of August, 20 12.

Craig W. Hinzman
Craig W. Hinzman, L.S.
Ramsey County Surveyor

MONUMENT 414

North Quarter Corner of Section 14, Township 29 North, Range 22 West

Set 1/4 Section post, Burr Oak 14 N26°W 92; "Do" [Burr Oak] 12 S66 ½°E 210, November 29, 1847.

The 1/4 Corner between Sections 11 and 14, found one old Government Witness stump, fixed corner and tied it, August 22, 1896, set monument.

Found granite monument down 5 in., September 3, 1974.

Tied granite monument out, November 1, 1974.

Placed cast iron cap monument, November 13, 1974.

Checked monument, May 11, 1981.

Tied monument, October 19, 2000.

Offset monument for removal, June 7, 2001.

Removed short cast iron monument for Maintenance Department; granite monument down 6.5 in., June 8, 2001.

Tied monument, August 31, 2006.

Retied cast iron monument, within a cast iron manhole assembly, June 24, 2011.