

MONUMENT 413

CERTIFICATE OF LOCATION OF PERPETUATED MONUMENT

Northeast Corner of Section 15, Township 29 North, Range 22 West, County of Ramsey, State of Minnesota.

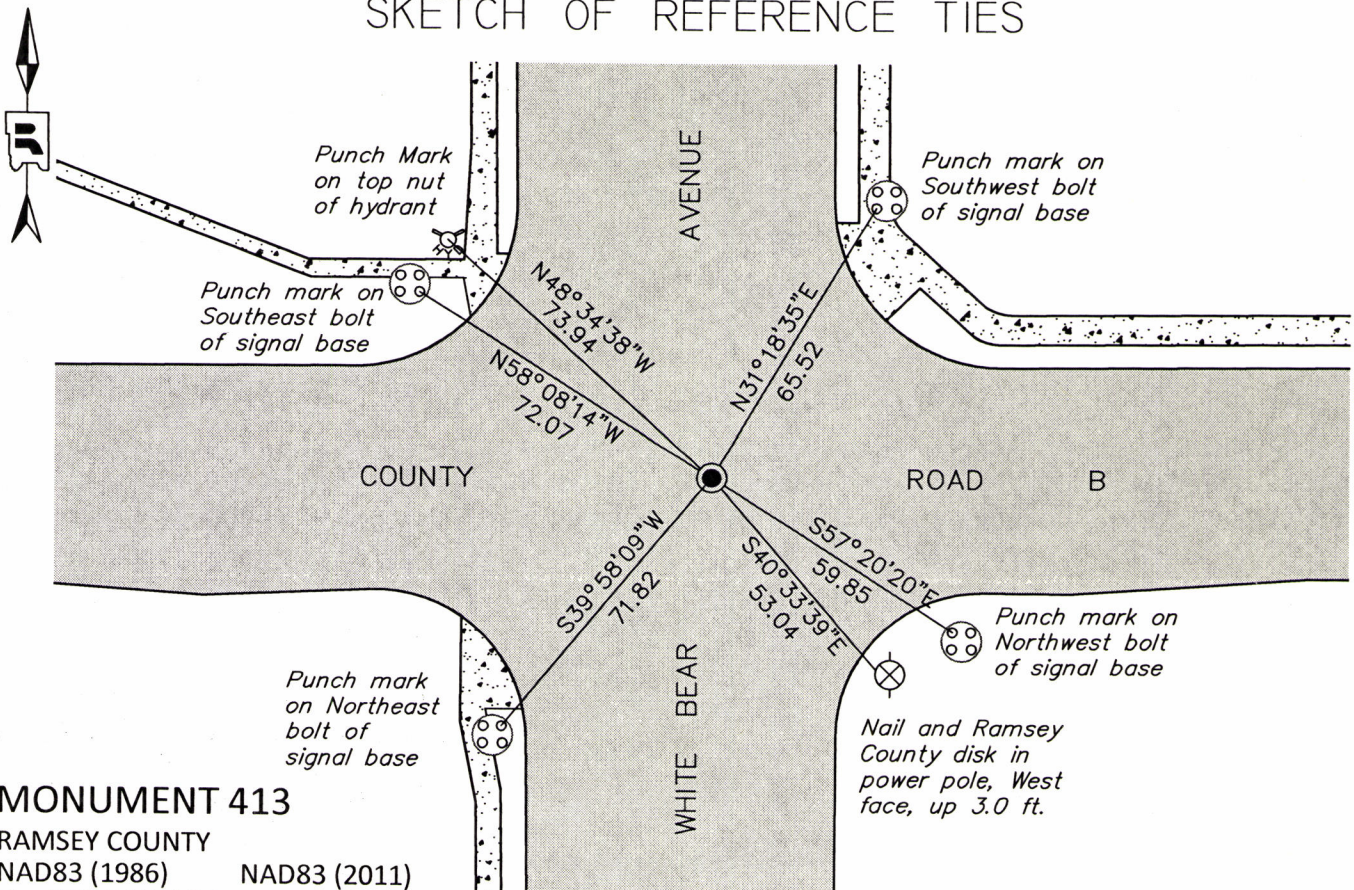
At the corner location shown on the sketch

On August 3, 2016 found a cast iron monument, flush. Retied Monument.

left monument as found raised/lowered monument removed monument (explain)

On _____ placed a _____

SKETCH OF REFERENCE TIES



MONUMENT 413

RAMSEY COUNTY

NAD83 (1986)

NAD83 (2011)

X= 592645.189 X= 592644.768 (Easting)

Y= 178705.369 Y= 178705.967 (Northing)

ALL DISTANCES ARE SHOWN IN U.S. SURVEY FEET.
BEARINGS ARE FOR TIE REFERENCE PURPOSES ONLY.

Statements of evidence relative to this corner are on the following page.

I hereby certify that this survey, plan, or report was prepared by me or under my direct supervision, that I am a duly Licensed Land Surveyor under the laws of the state of Minnesota, and that this certificate is correct and complete to the best of my knowledge and belief.

Daniel D. Baar 1-4-17
 Daniel D. Baar Date
 Deputy County Surveyor
 Minnesota License No. 45816

OFFICE OF COUNTY SURVEYOR
 County of Ramsey

I hereby certify that this document was filed in the County Surveyor's office this 4th day of January, 20 17.

Craig W. Hinzman
 Craig W. Hinzman, L.S.
 Ramsey County Surveyor

MONUMENT 413

Northeast Corner of Section 15, Township 29, Range 22

| | |
|--------------------|---|
| November 29, 1847 | Set post Corner to Sections 10, 11, 14, & 15, W. Oak 18 S32°E 60; "Do" W. Oak 14 N71°W 66. Isaac Higbey, Deputy Surveyor |
| Unknown date, 1896 | Northeast Corner of Section 15, found Government Witness stump, set Monument. Ramsey County Resurvey |
| December 8, 1960 | Checked Monument. Ramsey County Engineering Office |
| Unknown Date, 1974 | Found a Cast Iron Monument. Ramsey County Surveyor's Office |
| November 29, 1983 | Cast Iron Monument broken off by White Bear Avenue project. Ramsey County Surveyor's Office |
| July 6, 1984 | Checked and tied Monument. Ramsey County Surveyor's Office |
| October 19, 2000 | Retied Monument. Ramsey County Surveyor's Office |
| August 31, 2006 | Retied Monument. Ramsey County Surveyor's Office |
| June 27, 2011 | Retied Cast Iron Monument, flush. Ramsey County Surveyor's Office |
| October 26, 2015 | Found monument flush in road. Performed 50 minute Static Observation on monument. Ramsey County Surveyor's Office |
| August 3, 2016 | Found a Cast Iron Monument, flush. Checked ties using Certificate of Location dated June 27, 2011. Only one tie remained. Set five additional ties and retied monument. Ramsey County Surveyor's Office |