

MONUMENT 412S

CERTIFICATE OF LOCATION OF GOVERNMENT CORNER

South Witness Monument to the South Quarter Corner of Section 10, Township 29 North, Range 22 West, County of Ramsey, State of Minnesota.

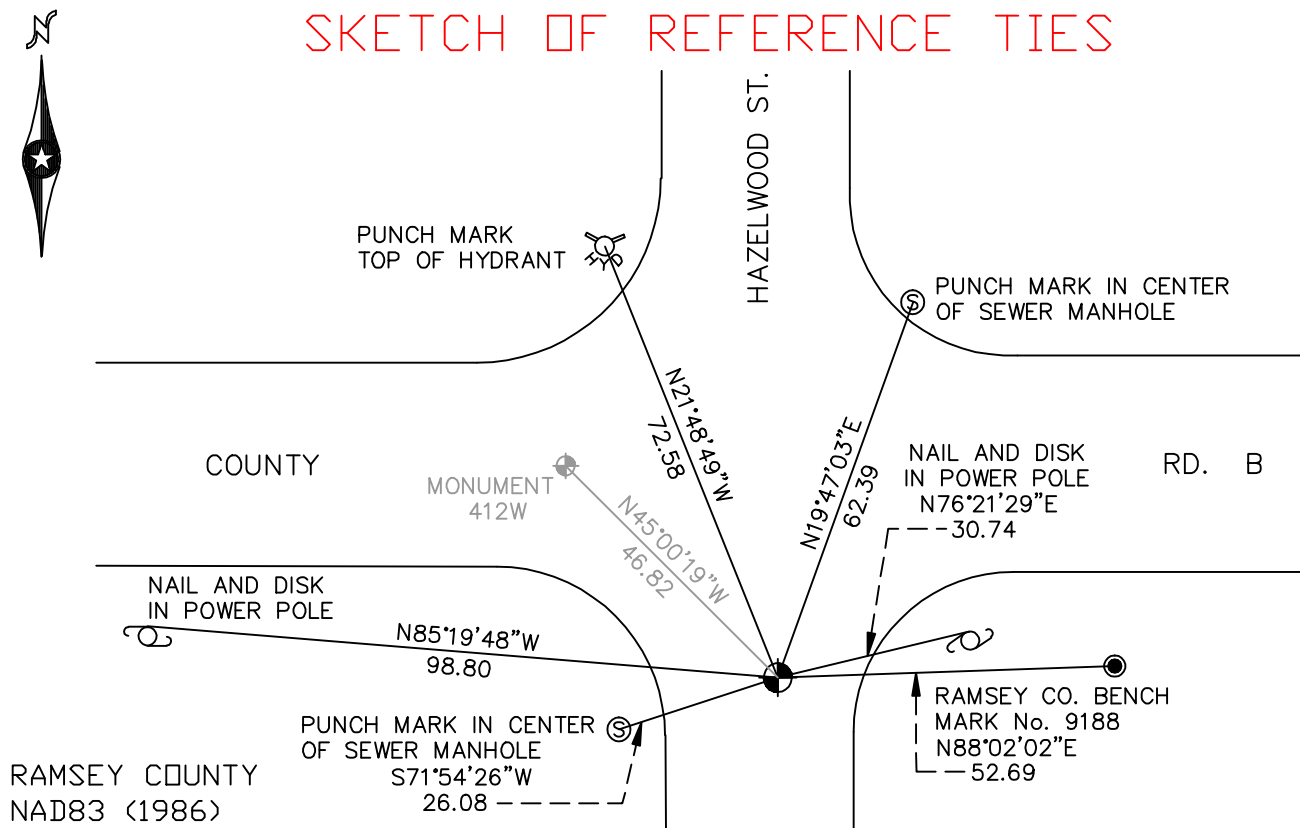
At the corner location shown on the sketch

On June 24, 2009 found a cast iron monument within a cast iron manhole assembly.

left monument as found lowered monument removed monument (explain)

On _____ placed a _____

SKETCH OF REFERENCE TIES



RAMSEY COUNTY
NAD83 (1986)

MONUMENT 412S

X= 589979.015 (Easting)
Y= 178669.294 (Northing)

ALL DISTANCES ARE SHOWN IN U.S. SURVEY FEET.
BEARINGS ARE FOR TIE REFERENCE PURPOSES ONLY.

Statements of evidence relative to this corner are on the following page(s).

I hereby certify that this document and the data contained herein was prepared by me or under my direct supervision this _____ day of _____, 20____.

SIGNATURE

Minnesota License No. _____

- County Surveyor
 Deputy County Surveyor Land Surveyor

OFFICE OF COUNTY SURVEYOR

County of Ramsey

I hereby certify that this document was filed in the County Surveyor's office on the _____ day of _____, 20____.

SIGNATURE

Michael D. Fiebiger, P.L.S.
Ramsey County Surveyor

MONUMENT 412S

Found a manhole at location. Used County Highway ties to locate point. Placed a P.K. nail and set a cast iron monument witness monument 33 ft. south on line. No date given in field book.

Tied witness corner monument, April 16, 1975.

Relocated position and tied, October 10, 1991.

Replaced monument with a 20 in. cast iron witness corner monument, October 11, 1991.

Cemented in monument, October 19, 1993.

Tied monument, April 10, 2003.

Tied out witness monument for removal during road construction, May 14, 2008.

Set P.K. nail at witness monument location from ties, September 22, 2008.

Set a 20 in. cast iron monument within a cast iron manhole assembly at monument position, October 1, 2008.

Tied monument, June 24, 2009.