

# MONUMENT 410

## CERTIFICATE OF LOCATION OF GOVERNMENT CORNER

North Quarter Corner of Section 16, Township 29 North, Range 22 West, County of Ramsey, State of Minnesota.

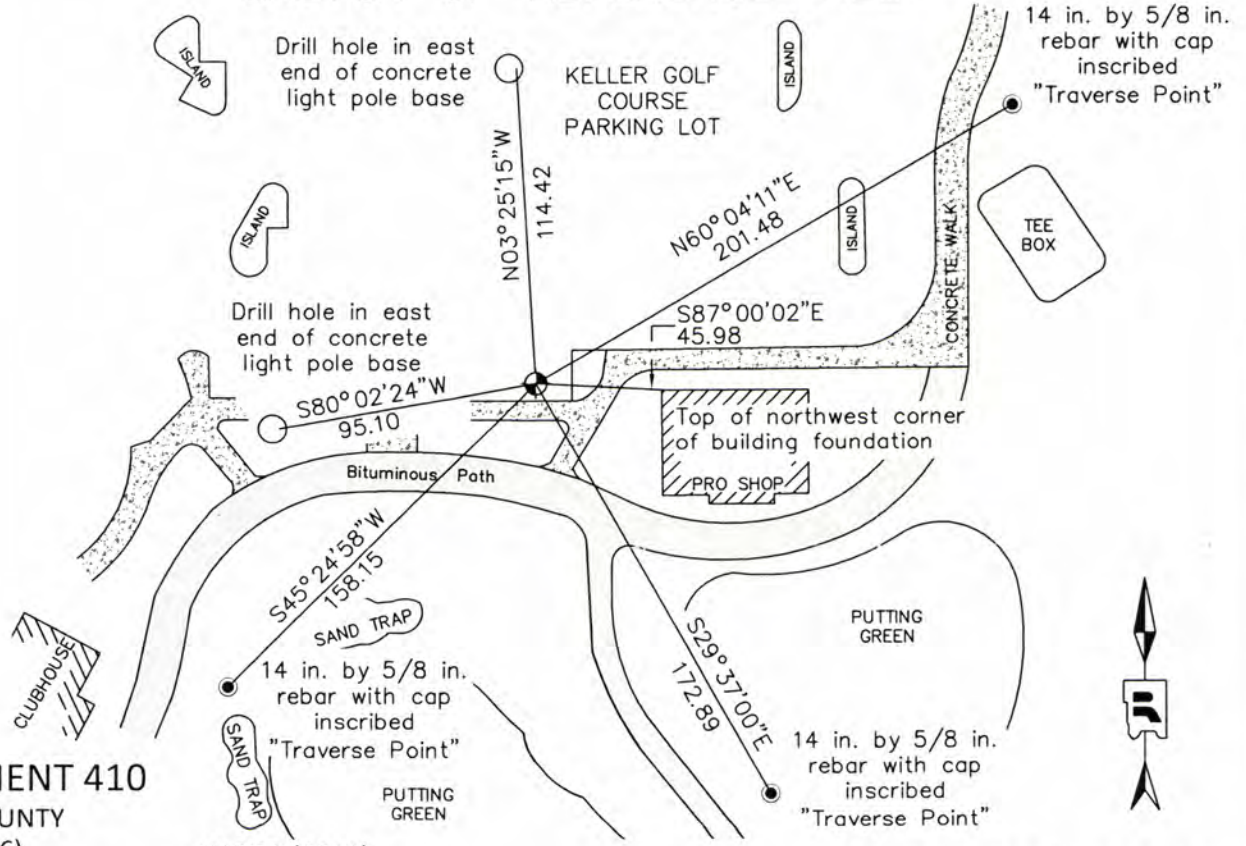
At the corner location shown on the sketch

On \_\_\_\_\_ found \_\_\_\_\_

left monument as found     
  raised/lowered monument     
  removed monument (explain)

On October 1, 2015 placed a 20 inch "Ramsey County" cast iron monument, flush in bituminous parking lot; tied monument.

### SKETCH OF REFERENCE TIES



#### MONUMENT 410

RAMSEY COUNTY  
NAD83 (1986)

584685.367 (Easting)	584684.896 (Easting)
178681.351 (Northing)	178681.986 (Northing)

ALL DISTANCES ARE SHOWN IN U.S. SURVEY FEET.  
BEARINGS ARE FOR TIE REFERENCE PURPOSES ONLY.

Statements of evidence relative to this corner are on the following page.

I hereby certify that this survey, plan, or report was prepared by me or under my direct supervision, that I am a duly Licensed Land Surveyor under the laws of the state of Minnesota, and that this certificate is correct and complete to the best of my knowledge and belief.

Daniel D. Baar      9-13-16  
 Daniel D. Baar      Date  
 Deputy County Surveyor  
 Minnesota License No. 45816

OFFICE OF COUNTY SURVEYOR  
County of Ramsey

I hereby certify that this document was filed in the County Surveyor's office this 13<sup>th</sup> day of September, 20 16.

Craig W. Hinzman  
 Craig W. Hinzman, L.S.  
 Ramsey County Surveyor

# MONUMENT 410

North Quarter Corner of Section 16, Township 29 North, Range 22 West

- |                   |   |
|-------------------|---|
| November 29, 1847 | Set 1/4 section post common to sections 9 and 16 (B Oak, 8 N77W 84, Bur Oak 9 S50E 1.54). Isaac Higbee, Deputy Surveyor.  |
| September 1, 1899 | Found monument at the Quarter Corner between Sections 9 and 16. Government witness trees gone. Ramsey County Resurvey.  |
| July 25, 1974     | Found a granite monument down 0.3 ft. and tied. Ramsey County Surveyor's Office.  |
| April 14, 2003    | Retied monument, down +/- 1 in., appears to be tipped to the east. Ramsey County Surveyor's Office.   |
| June 25, 2009     | Retied monument. Ramsey County Surveyor's Office.   |
| August 18, 2015   | Established control points near monument location and tied into historical traverse points using static GPS. Ramsey County Surveyor's Office.   |
| October 1, 2015.  | Re-established position using record historical traverse data. Placed a 20 in. cast iron monument using conventional instruments and static GPS control. Tied monument using a total station. Previous monument destroyed by reconstruction of Keller Golf Course - Exact date unknown. Ramsey County Surveyor's Office.<br>Note: Traverse adjustment, field notes and analysis available at the Ramsey County Surveyor's Office. |