

MONUMENT 408

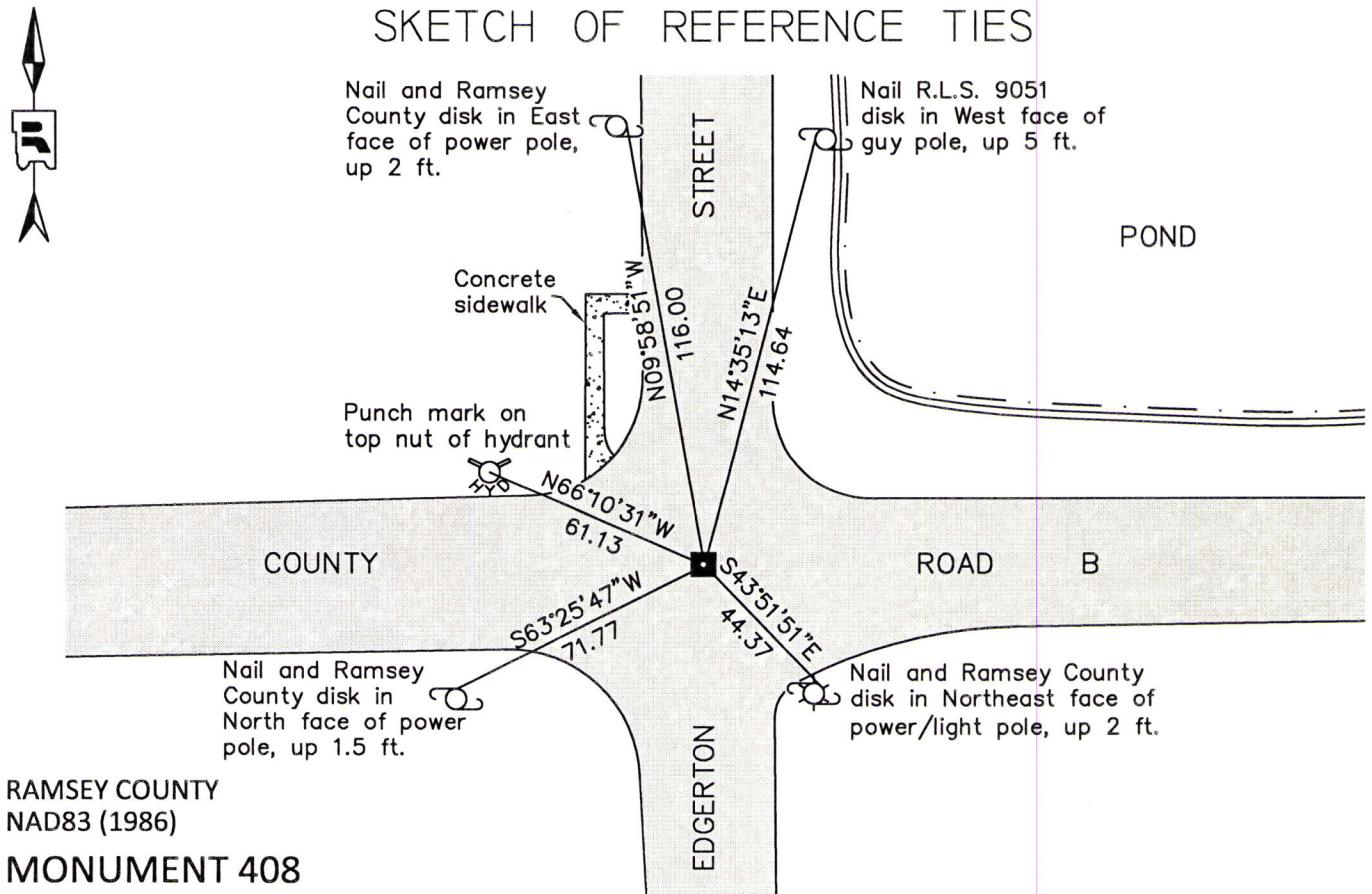
CERTIFICATE OF LOCATION OF GOVERNMENT CORNER

North Quarter Corner of Section 17, Township 29 North, Range 22 West, County of Ramsey, State of Minnesota.

At the corner location shown on the sketch

- On June 27, 2012 found a 6 in. x 7 in. granite monument with drill hole, down +/-8 in. in bituminous road.
- left monument as found raised/lowered monument removed monument (explain)
- On August 24, 2012 placed a cast iron manhole assembly over and tied granite monument.

SKETCH OF REFERENCE TIES



RAMSEY COUNTY
NAD83 (1986)
MONUMENT 408

X= 579408.317 (Easting)
Y= 178628.354 (Northing)

ALL DISTANCES ARE SHOWN IN U.S. SURVEY FEET.
BEARINGS ARE FOR TIE REFERENCE PURPOSES ONLY.

Statements of evidence relative to this corner are on the following page.

I hereby certify that this document was prepared by me or under my direct supervision and that I am a duly Licensed Land Surveyor under the laws of the State of Minnesota.

Daniel D. Baar 11-19-14
Date

Minnesota License No. 45816

County Surveyor Land Surveyor
 Deputy County Surveyor

OFFICE OF COUNTY SURVEYOR
County of Ramsey

I hereby certify that this document was filed in the County Surveyor's office this 19th day of November, 2014.

Craig W. Hinzman
Craig W. Hinzman, L.S.
Ramsey County Surveyor

MONUMENT 408

North Quarter Corner of Section 17, Township 29 North, Range 22 West

Set 1/4 Section post, W. Oak 16 S53°E 188, B. Oak 18 S86°W 212,
November 29, 1847.

The 1/4 Corner between Sections 8 and 17 was fixed in 1885 by Gates A. Johnson
and monument set; retied and reset monument, August, 1896.

SUNRISE HEIGHTS RAMSEY CO. MINN. plat shows a granite monument at described
location, July 2, 1940.

Tied monument, March, 1961.

Found a granite monument down 0.3 ft. and retied, September 10, 1974.

Placed a cast iron cap and bolt monument in concrete, September 11, 1974.

Removed cast iron cap monument, June 15, 1990.

Placed a short (4-5/8 in.) cast iron monument in concrete and tied,
October 26, 1990.

Retied monument, December 30, 2002.

Retied monument, August 9, 2007.

Tied monument for removal during road reconstruction, then removed short cast iron
monument; found a 6 in. x 7 in. granite monument, down +/-0.6 ft., June 27, 2012.

Placed a cast iron manhole assembly over granite and tied, August 24, 2012.