

MONUMENT 407

CERTIFICATE OF LOCATION OF GOVERNMENT CORNER

Northeast Corner of Section 18, Township 29 North, Range 22 West, County of Ramsey, State of Minnesota.

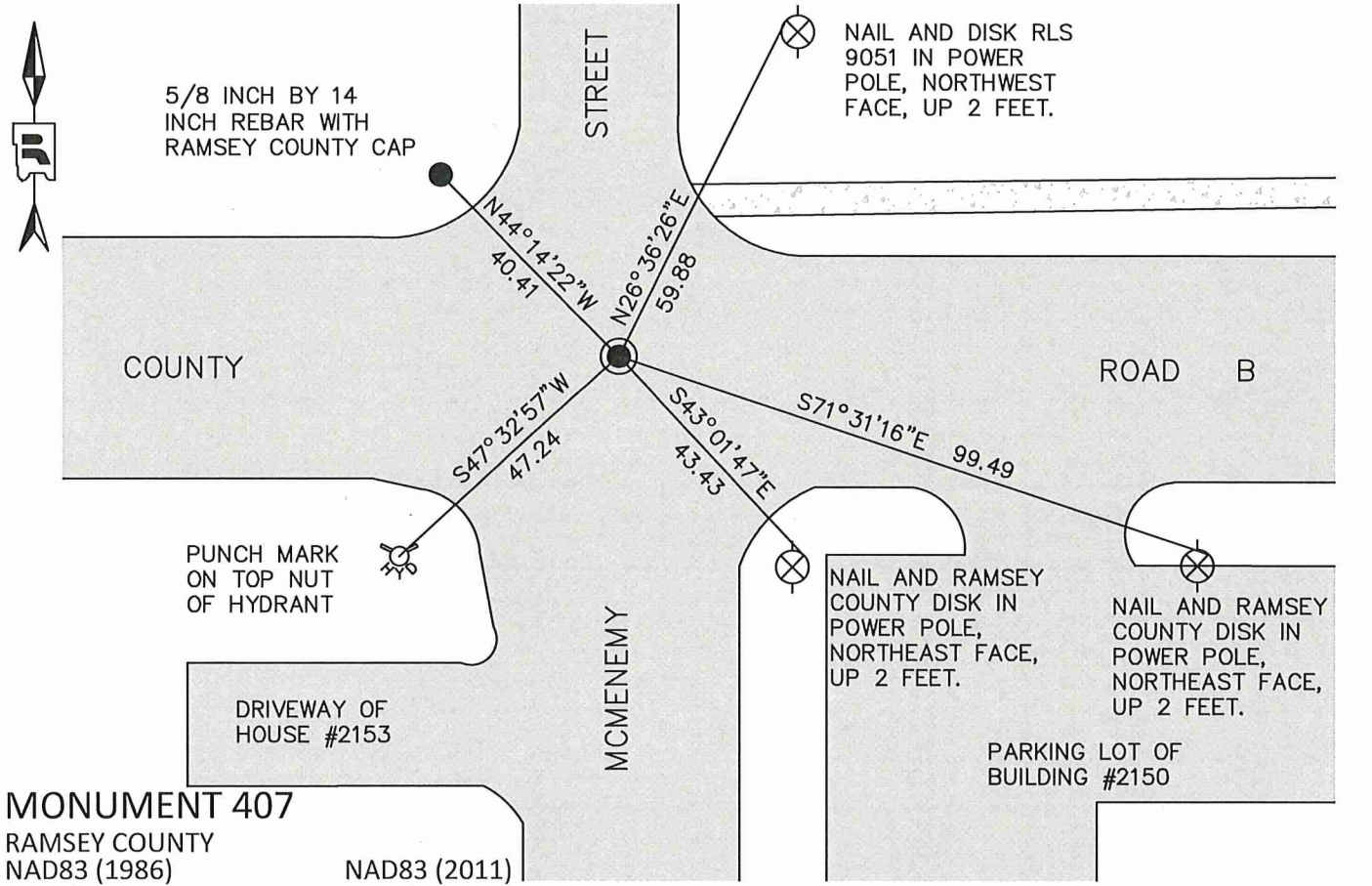
At the corner location shown on the sketch

On July 12, 2017 found a cast iron monument down 0.2 ft. in bituminous road.

left monument as found raised/lowered monument removed monument (explain)

On _____ placed a _____

SKETCH OF REFERENCE TIES



Statements of evidence relative to this corner are on the following page.

I hereby certify that this survey, plan, or report was prepared by me or under my direct supervision, that I am a duly Licensed Land Surveyor under the laws of the state of Minnesota, and that this certificate is correct and complete to the best of my knowledge and belief.

Daniel D. Baar 5/25/21
 Daniel D. Baar Date
 Ramsey County Surveyor
 Minnesota License No. 45816

OFFICE OF COUNTY SURVEYOR
 County of Ramsey

I hereby certify that this document was filed in the County Surveyor's office this 25th day of May, 2021.

Daniel D. Baar
 Daniel D. Baar, L.S.
 Ramsey County Surveyor

MONUMENT 407

Northeast Corner of Section 18, Township 29 North, Range 22 West

November 29, 1847	Set post corner to Sections 7, 8, 17, & 18; Bur Oak 14 N63E 1.01 and White Oak 16 S71W 167.
October, 1885	The Southeast Corner of Section 7 / Northeast corner of Section 18 was fixed by Gates A. Johnson from old government witness stump. Ramsey County Re-monumentation Survey.
1895	Set monument and tied. Ramsey County Re-monumentation Survey.
May, 1939	Checked monument. Ramsey County Engineer's Office.
March 13, 1961	Retied granite monument. Ramsey County Engineer's Office.
May, 1970	Checked granite monument. Ramsey County Engineer's Office.
September 18, 1974	Found granite monument flush and retied. Ramsey County Surveyor's Office.
May 14, 1991	Maintenance Department to remove granite today; tied monument. Ramsey County Surveyor's Office.
August 26, 1991	Relocated position and set 4 PK nails. Ramsey County Surveyor's Office.
Unknown day, 1991	Placed 20 inch cast iron monument. Ramsey County Surveyor's Office.
December 30, 2002	Tied monument. Ramsey County Surveyor's Office.
August 9, 2007	Retied monument. Ramsey County Surveyor's Office.
July 20, 2012	Checked cast iron monument and tie conditions. Ramsey County Surveyor's Office.
July 12, 2017	Found cast iron monument and retied. Ramsey County Surveyor's Office.