

# MONUMENT 406

## CERTIFICATE OF LOCATION OF FOUND MONUMENT

North Quarter Corner of Section 18, Township 29 North, Range 22 West, County of Ramsey, State of Minnesota.

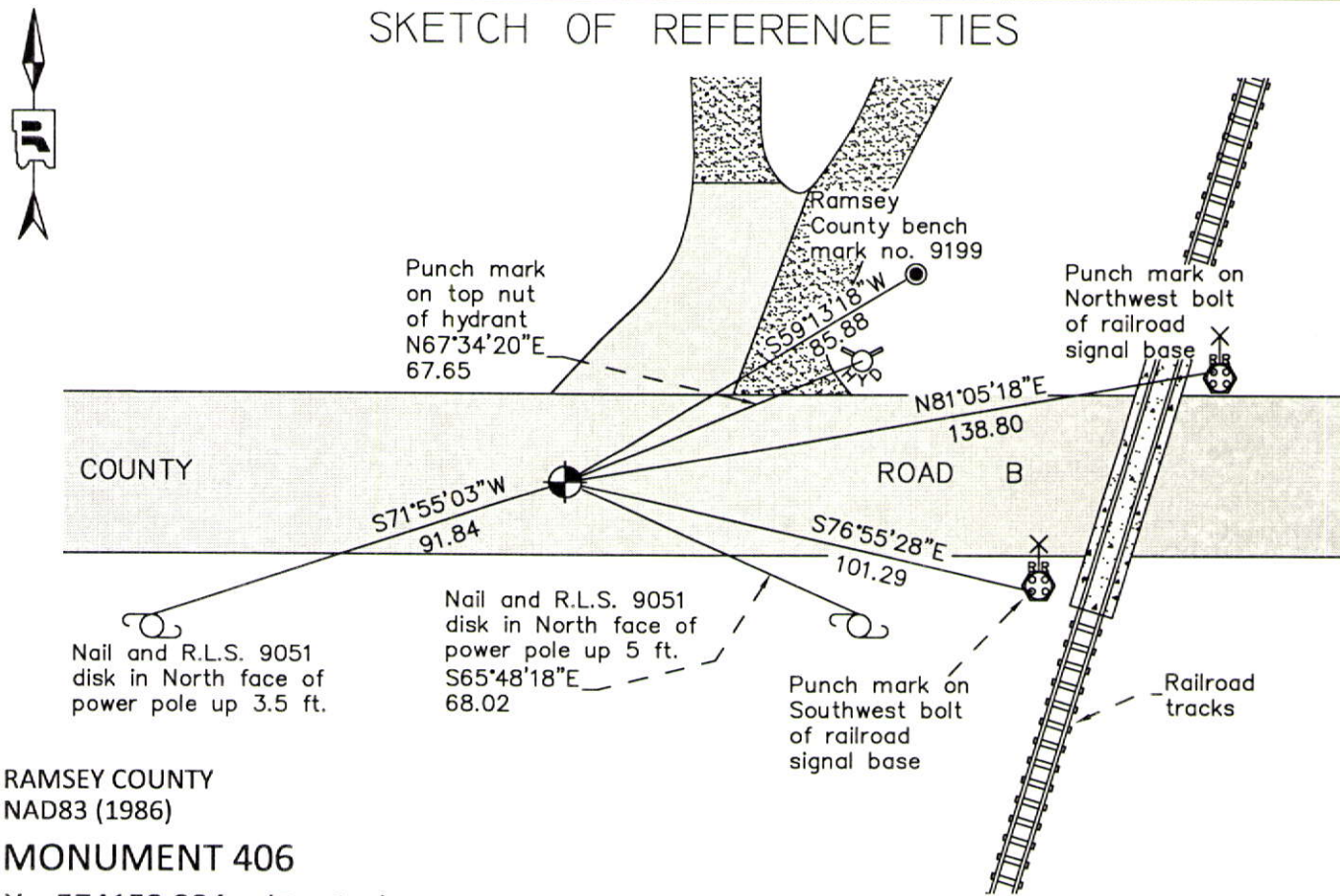
At the corner location shown on the sketch

On July 20, 2012 found a "Ramsey County" cast iron monument, down 0.15 ft, in bituminous road.

left monument as found     
  raised/lowered monument     
  removed monument (explain)

On \_\_\_\_\_ placed a \_\_\_\_\_

### SKETCH OF REFERENCE TIES



RAMSEY COUNTY  
NAD83 (1986)

### MONUMENT 406

X= 574152.334 (Easting)  
Y= 178581.205 (Northing)

ALL DISTANCES ARE SHOWN IN U.S. SURVEY FEET.  
BEARINGS ARE FOR TIE REFERENCE PURPOSES ONLY.

Statements of evidence relative to this corner are on the following page.

I hereby certify that this document was prepared by me or under my direct supervision and that I am a duly Licensed Land Surveyor under the laws of the State of Minnesota.

Daniel D. Baar      12-30-14  
Daniel D. Baar      Date

Minnesota License No. 45816

- County Surveyor     
  Land Surveyor  
 Deputy County Surveyor

OFFICE OF COUNTY SURVEYOR  
County of Ramsey

I hereby certify that this document was filed in the County Surveyor's office this 30th day of December, 20 14.

Craig W. Hinzman  
Craig W. Hinzman, L.S.  
Ramsey County Surveyor

# MONUMENT 406

North Quarter Corner of Section 18, Township 29 North, Range 22 West

Set 1/4 Section post, B. Oak 12 S3-1/2°W 22, W. Oak 10 N79°E 55,  
November 29, 1847.

The 1/4 Corner between Sections 7 and 18 was fixed by Gates A. Johnson from old  
Government witness tree, 1885.

Set monument, 1895.

Checked monument, May, 1939.

Checked granite monument, July, 1969.

Found a cast iron monument flush and tied, September 18, 1974.

Monument tied, top 5 in. removed, May 14, 1991.

Relocated position and set 4 P.K. nails, August 27, 1991.

Placed a 20 in cast iron monument, 1991.

Tied monument, December 30, 2002.

Retied monument, August 7, 2007.

Checked cast iron monument and tie conditions, July 20, 2012.