

# MONUMENT 403W

## CERTIFICATE OF LOCATION OF GOVERNMENT CORNER

West Witness Corner to the Northeast Corner of Section 14, Township 29 North, Range 23 West, County of Ramsey, State of Minnesota.

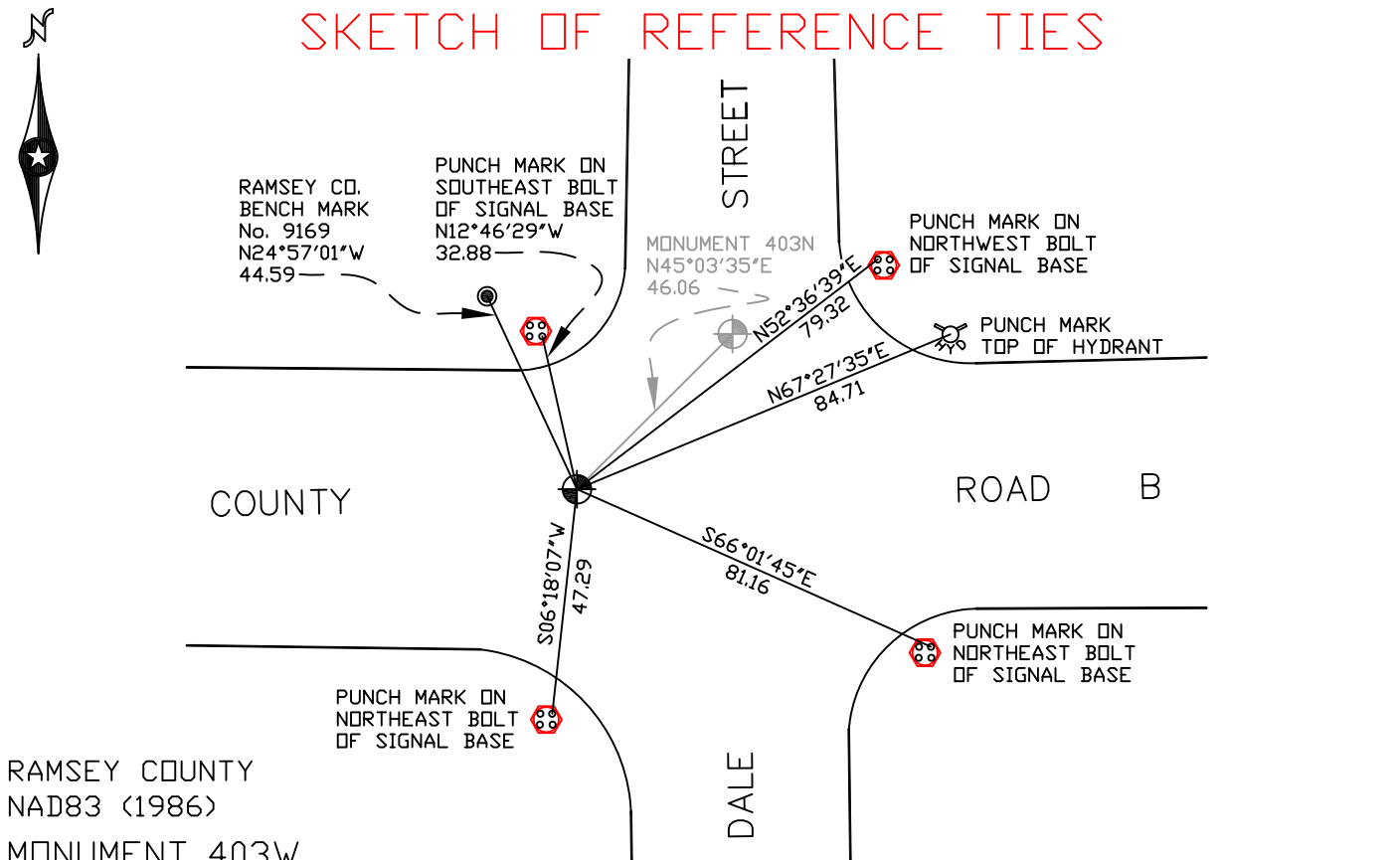
At the corner location shown on the sketch

On August 8, 2007 found a cast iron monument within a cast iron manhole assembly.

left monument as found     lowered monument     removed monument (explain)

On \_\_\_\_\_ placed a \_\_\_\_\_

### SKETCH OF REFERENCE TIES



RAMSEY COUNTY  
NAD83 (1986)  
MONUMENT 403W

X= 566488.674 (Easting)  
Y= 178512.853 (Northing)

ALL DISTANCES ARE SHOWN IN U.S. SURVEY FEET.  
BEARINGS ARE FOR TIE REFERENCE PURPOSES ONLY.

Statements of evidence relative to this corner are on the following page(s).

I hereby certify that this document and the data contained herein was prepared by me or under my direct supervision this \_\_\_\_\_ day of \_\_\_\_\_, 20\_\_\_\_.

SIGNATURE

Minnesota License No. \_\_\_\_\_

- County Surveyor  
 Deputy County Surveyor     Land Surveyor

OFFICE OF COUNTY SURVEYOR  
County of Ramsey

I hereby certify that this document was filed in the County Surveyor's office on the \_\_\_\_ day of \_\_\_\_\_, 20\_\_\_\_.

David D. Claypool, P.L.S., County Surveyor

By \_\_\_\_\_, Deputy

## MONUMENT 403W

Found a manhole at monument location; see "Survey Book No. 2" and Sections 11 and 13, T29N, R23W folders. Placed cast iron monument 33 ft. west on line, no date given in field book.

Retied monument, March 26, 1985.

Removed monument and reset cast iron monument 18 in. below street grade; contractor to set tube and cast iron manhole assembly, July 10, 2001.

Retied monument, July 19, 2002.

Retied monument, August 8, 2007.