

MONUMENT 400E

CERTIFICATE OF LOCATION OF GOVERNMENT CORNER

East Sixteenth Corner between Section 10 and Section 15, Township 29 North,
Range 23 West, County of Ramsey, State of Minnesota.

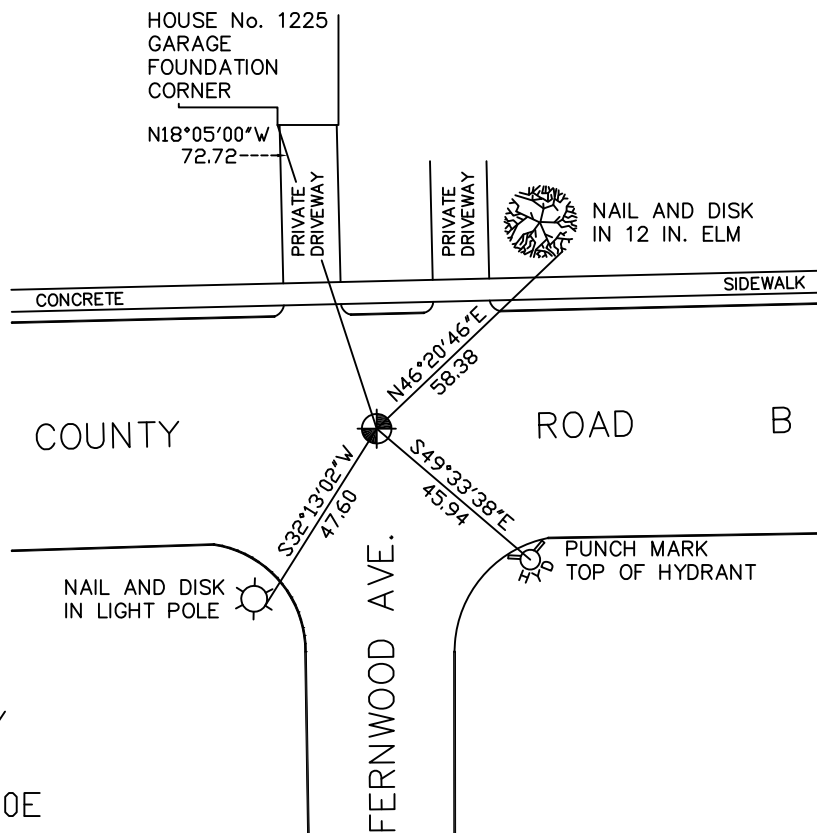
At the corner location shown on the sketch

On May 7, 2008 found a cast iron monument, down 0.03 foot.

left monument as found lowered monument removed monument (explain)

On _____ placed a _____

SKETCH OF REFERENCE TIES



RAMSEY COUNTY
NAD83 (1986)
MONUMENT 400E

X= 559965.639 (Easting)
Y= 178564.275 (Northing)

ALL DISTANCES ARE SHOWN IN U.S. SURVEY FEET.
BEARINGS ARE FOR TIE REFERENCE PURPOSES ONLY.

Statements of evidence relative to this corner are on the following page(s).

I hereby certify that this document and the data contained herein was prepared by me or under my direct supervision this _____ day of _____, 20____.

SIGNATURE

Minnesota License No. _____

- County Surveyor
 Deputy County Surveyor Land Surveyor

OFFICE OF COUNTY SURVEYOR

County of Ramsey

I hereby certify that this document was filed in the County Surveyor's office on the ____ day of _____, 20____.

David D. Claypool, P.L.S., County Surveyor

By _____, Deputy

MONUMENT 400E

Found a cast iron monument flush and tied out, January 27, 1975.

Monument checked, July 29, 1977.

Retied monument, July 31, 1998.

Retied monument, found flush, August 4, 2003.

Retied monument, down 0.03 ft., May 7, 2008.