

MONUMENT 393

CERTIFICATE OF LOCATION OF GOVERNMENT CORNER

Center of Section 12, Township 29 North, Range 22 West, County of Ramsey,
State of Minnesota.

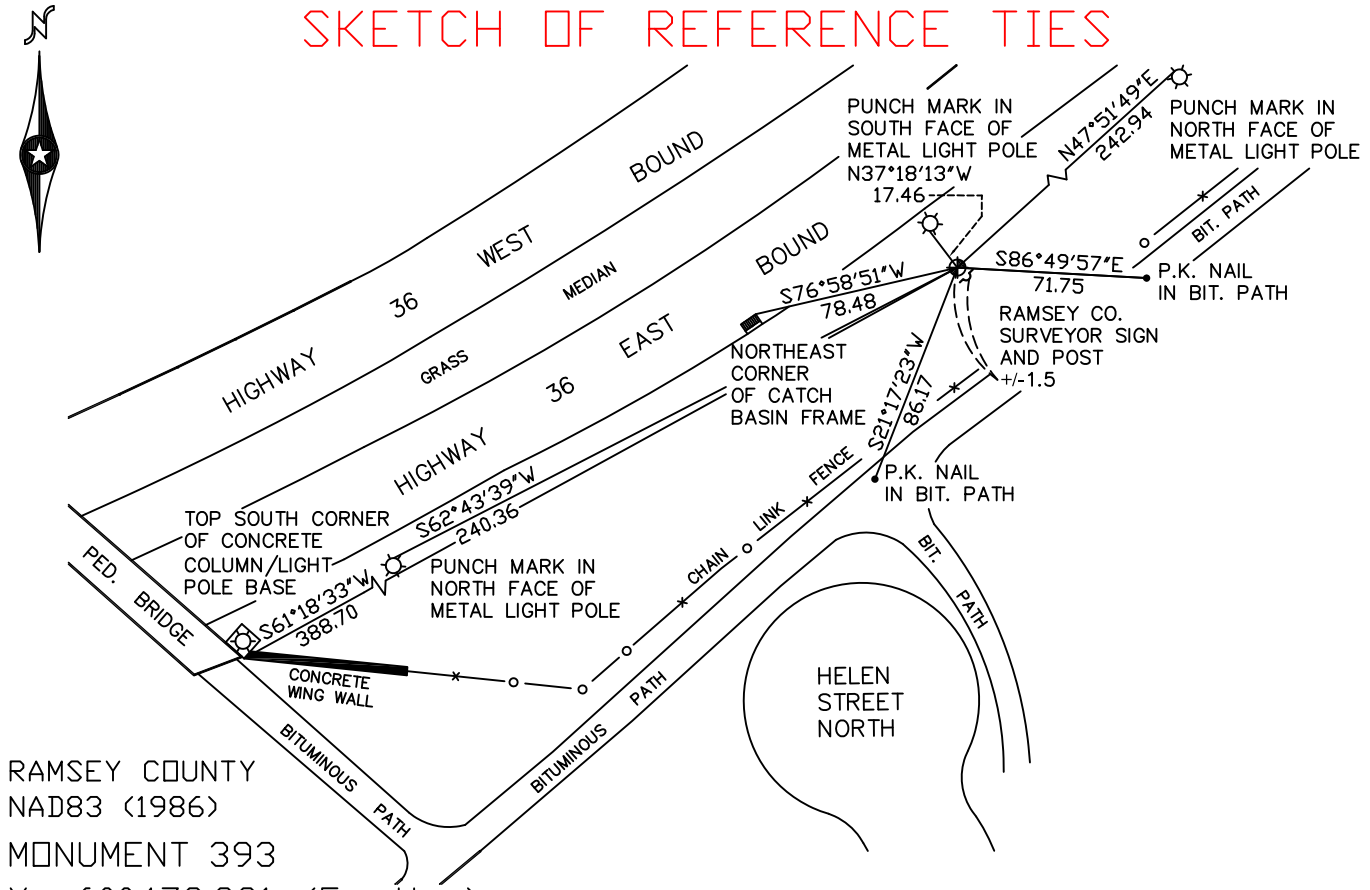
At the corner location shown on the sketch

On August 11, 2010 found a cast iron monument, flush.

left monument as found lowered monument removed monument (explain)

On _____ placed a _____

SKETCH OF REFERENCE TIES



RAMSEY COUNTY
NAD83 (1986)
MONUMENT 393

X= 600473.981 (Easting)
Y= 181449.593 (Northing)

ALL DISTANCES ARE SHOWN IN U.S. SURVEY FEET.
BEARINGS ARE FOR TIE REFERENCE PURPOSES ONLY.

Statements of evidence relative to this corner are on the following page(s).

I hereby certify that this document and the data contained herein was prepared by me or under my direct supervision this _____ day of _____, 20____.

SIGNATURE
Minnesota License No. _____
 County Surveyor
 Deputy County Surveyor Land Surveyor

OFFICE OF COUNTY SURVEYOR
County of Ramsey

I hereby certify that this document was filed in the County Surveyor's office on the _____ day of _____, 20____.

SIGNATURE
Michael D. Fiebiger, P.L.S.
Ramsey County Surveyor

MONUMENT 393

Found a 19 in. long, 3/4 in. diameter pipe; dug down 2 ft. below ditch; placed iron back, August 30, 1974.

Computed center of section (± 1.5 ft. south of iron) and dug ± 4.3 ft.; found nothing more, March 26, 1976.

Placed a cast iron monument at computed intersection, placed guard post and sign and tied out. Cast iron monument is approximately 1.4 ft. south of found iron, June 3, 1991.

Retied monument, October 18, 2000.

Tied out for construction removal, November 6, 2006.

Reset a 20 in. cast iron monument in concrete; placed a sign and post 1.5 ft. southerly, November 19, 2007.

Tied monument, August 11, 2010.