

MONUMENT 392

CERTIFICATE OF LOCATION OF GOVERNMENT CORNER

East Quarter Corner of Section 11, Township 29 North, Range 22 West, County of Ramsey, State of Minnesota.

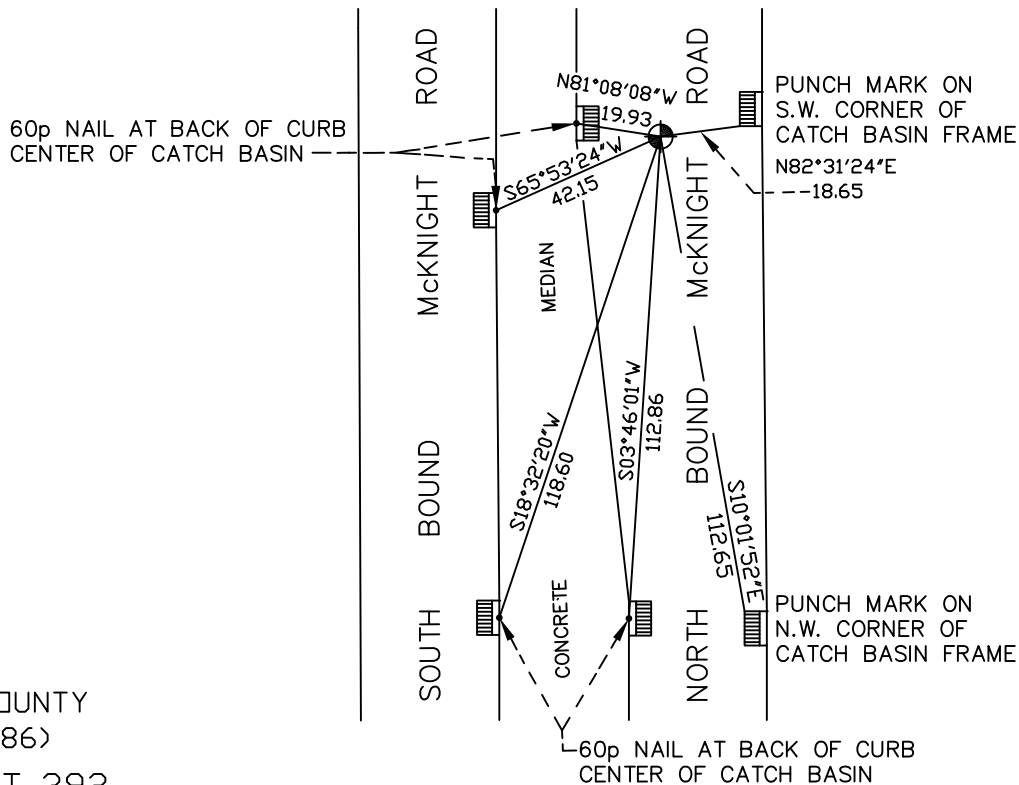
At the corner location shown on the sketch

On October 17, 2008 found a cast iron monument within a cast iron manhole assembly.

left monument as found lowered monument removed monument (explain)

On _____ placed a _____

SKETCH OF REFERENCE TIES



RAMSEY COUNTY
NAD83 (1986)

MONUMENT 392

X= 597859.875 (Easting)
Y= 181381.905 (Northing)

ALL DISTANCES ARE SHOWN IN U.S. SURVEY FEET.
BEARINGS ARE FOR TIE REFERENCE PURPOSES ONLY.

Statements of evidence relative to this corner are on the following page(s).

I hereby certify that this document and the data contained herein was prepared by me or under my direct supervision this _____ day of _____, 20____.

SIGNATURE

Minnesota License No. _____

- County Surveyor
 Deputy County Surveyor Land Surveyor

OFFICE OF COUNTY SURVEYOR
County of Ramsey

I hereby certify that this document was filed in the County Surveyor's office on the ____ day of _____, 20____.

David D. Claypool, P.L.S., County Surveyor

By _____, Deputy

MONUMENT 392

Found a 1 inch by 18 inch long iron flush and a cast iron monument. See "Survey Book No. 3", pages 6, 7 & 8. Also see Document No. 1975519 in County Records Office by John Turpin, April, 1976.

Placed a cast iron monument, April 30, 1976.

Tied monument, July 18, 1984.

Retied monument, August 9, 1990.

Retied monument, April 10, 2003.

Tied out monument for removal during road reconstruction, November 8, 2006.

Set a P.K. nail at corner position, May 5, 2008.

Reset a 20 inch cast iron monument down 8 inches; contractor to set cast iron manhole assembly, June 9, 2008.

Tied monument, October 17, 2008.