

MONUMENT 39

CERTIFICATE OF LOCATION OF GOVERNMENT CORNER

Center of Section 6, Township 30 North, Range 22 West, County of Ramsey,
State of Minnesota.

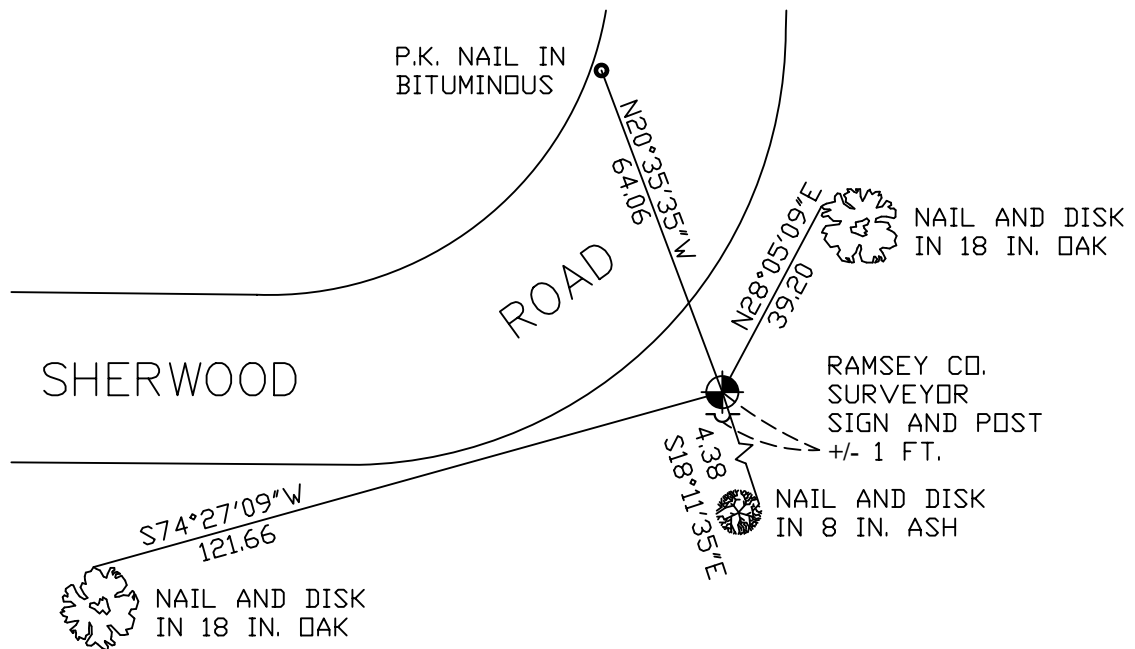
At the corner location shown on the sketch

On November 3, 2009 found a cast iron monument, down 0.3 feet.

left monument as found lowered monument removed monument (explain)

On _____ placed a _____

SKETCH OF REFERENCE TIES



RAMSEY COUNTY
NAD83 (1986)

MONUMENT 39

X= 573922.863 (Easting)
Y= 218390.788 (Northing)

ALL DISTANCES ARE SHOWN IN U.S. SURVEY FEET.
BEARINGS ARE FOR TIE REFERENCE PURPOSES ONLY.

Statements of evidence relative to this corner are on the following page(s).

I hereby certify that this document and the data contained herein was prepared by me or under my direct supervision this _____ day of _____, 20____.

SIGNATURE

Minnesota License No. _____

- County Surveyor
 Deputy County Surveyor Land Surveyor

OFFICE OF COUNTY SURVEYOR
County of Ramsey

I hereby certify that this document was filed in the County Surveyor's office on the _____ day of _____, 20____.

SIGNATURE

Michael D. Fiebiger, P.L.S.
Ramsey County Surveyor

MONUMENT 39

Found a 1½ in. diameter solid iron, down 6 in. and retied, January 23, 1976.

Replaced 1½ in. solid iron with a 20 in. cast iron monument, May 21, 1976.

Tied monument, July 18, 1990.

Placed a sign and post +/-1 ft. south of monument, July 9, 1992.

Retied monument, October 11, 2000.

Retied monument, July 12, 2004.

Retied monument, November 3, 2009.