

MONUMENT 387

CERTIFICATE OF LOCATION OF GOVERNMENT CORNER

Center of Section 9, Township 29 North, Range 22 West, County of Ramsey,
State of Minnesota.

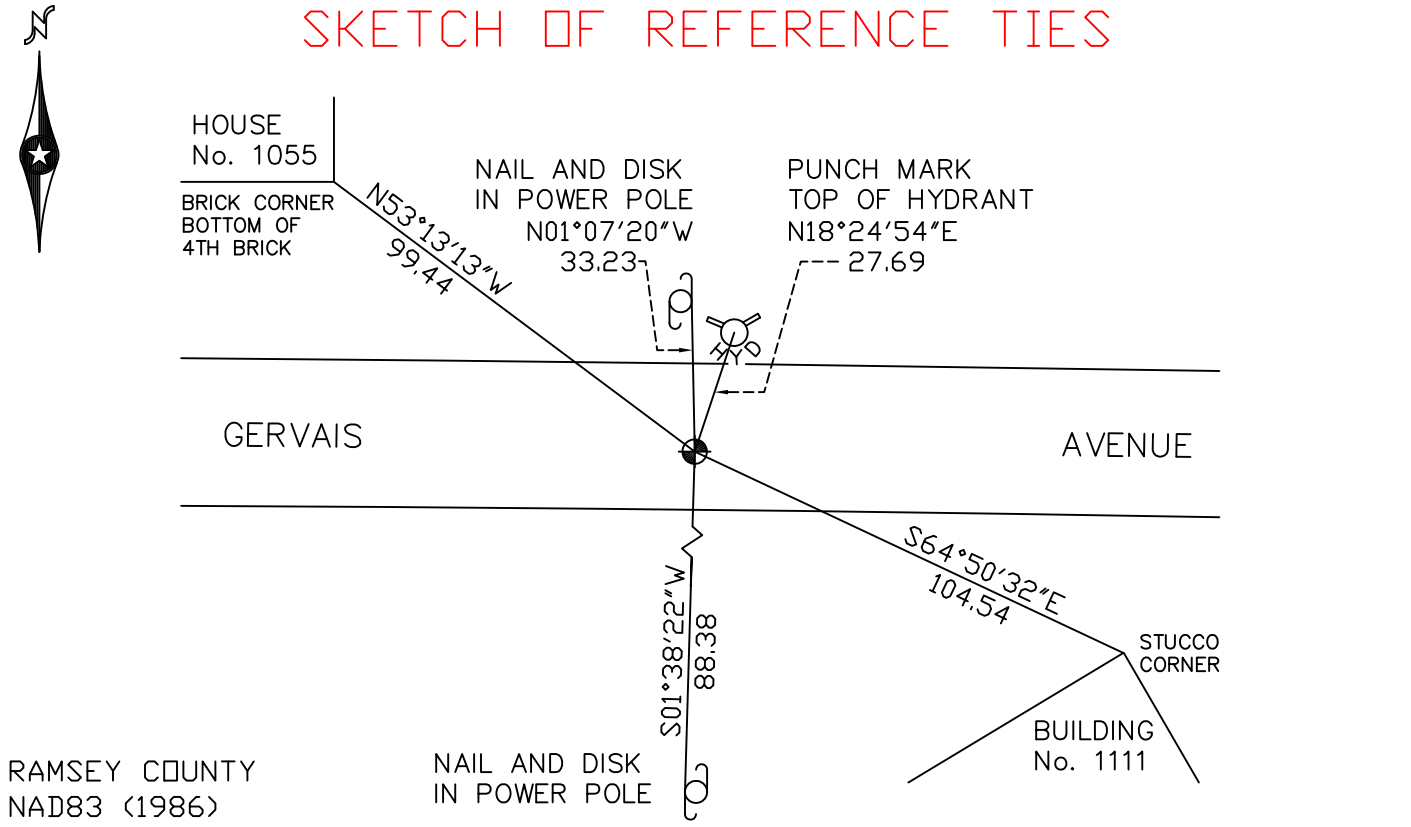
At the corner location shown on the sketch

On October 1, 2010 found a cast iron monument, flush.

left monument as found lowered monument removed monument (explain)

On _____ placed a _____

SKETCH OF REFERENCE TIES



RAMSEY COUNTY
NAD83 (1986)

MONUMENT 387

X = 584678.072 (Easting)
Y = 181312.384 (Northing)

ALL DISTANCES ARE SHOWN IN U.S. SURVEY FEET.
BEARINGS ARE FOR TIE REFERENCE PURPOSES ONLY.

Statements of evidence relative to this corner are on the following page(s).

I hereby certify that this document and the data contained herein was prepared by me or under my direct supervision this _____ day of _____, 20____.

SIGNATURE

Minnesota License No. _____

County Surveyor Deputy County Surveyor Land Surveyor

OFFICE OF COUNTY SURVEYOR
County of Ramsey

I hereby certify that this document was filed in the County Surveyor's office on the _____ day of _____, 20____.

SIGNATURE

Michael D. Fiebiger, P.L.S.
Ramsey County Surveyor

MONUMENT 387

Found a 3/4 in. iron flush and tied. No date given in field book.

Used old ties from Ray Wolfgram's notes; checked location, see section folder. Placed a cast iron monument. No date given in field book.

Cast iron monument destroyed. Reset monument, 1980.

Found monument gone. Found cast iron monument down 12 in. in wrong place. Moved to correct position and tied, July 30, 1987.

Checked monument, August 9, 1990.

Retied monument, April 9, 2003.

Monument missing; established position using ties; set a 20 in. cast iron monument in concrete, flush with bituminous road, September 29, 2010.

Tied monument, October 1, 2010.