

MONUMENT 386

CERTIFICATE OF LOCATION OF GOVERNMENT CORNER

East Quarter Corner of Section 8, Township 29 North, Range 22 West, County of Ramsey, State of Minnesota.

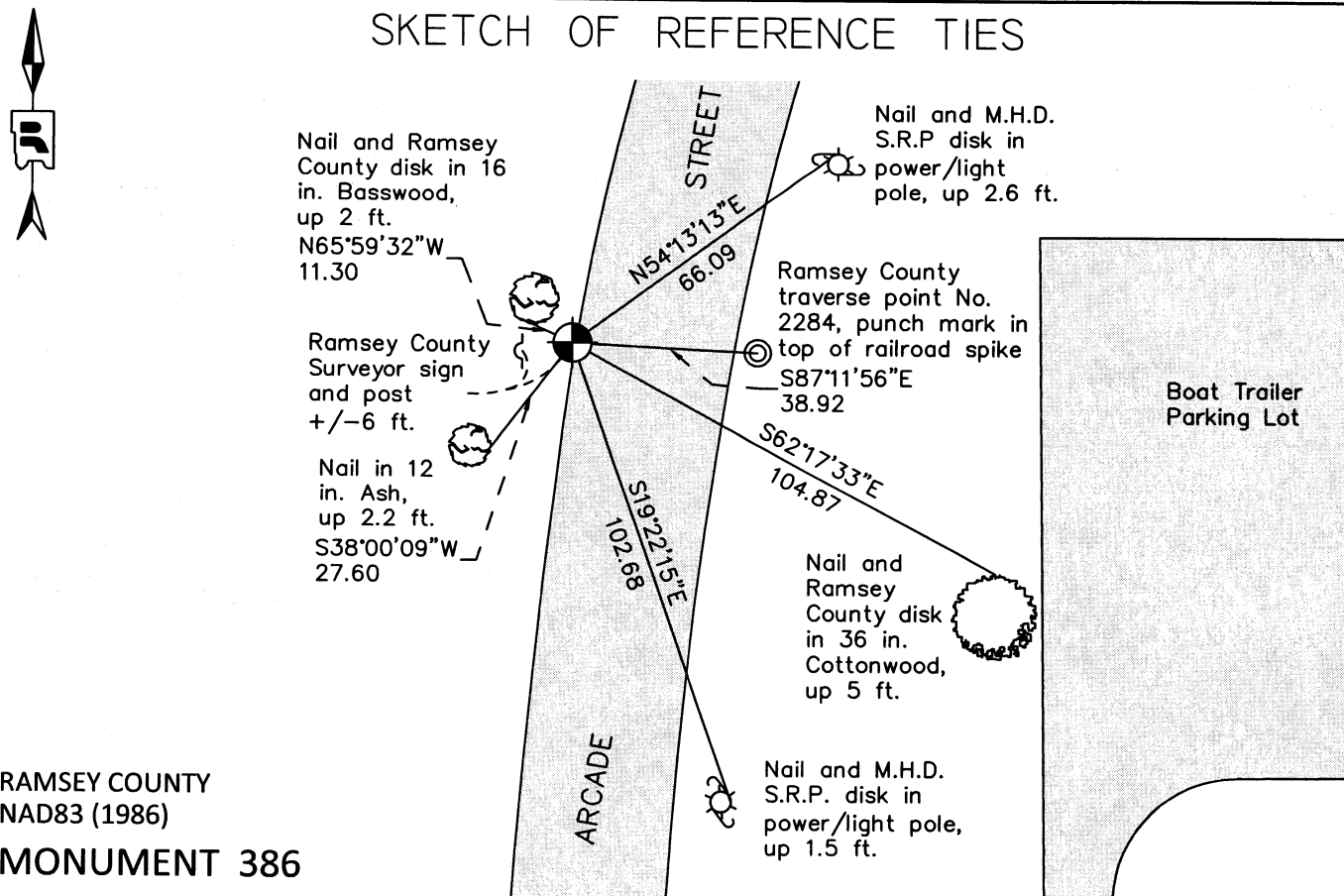
At the corner location shown on the sketch

On June 30, 2011 found a cast iron monument, down +/-0.6 ft., west of bituminous road edge.

left monument as found raised/lowered monument removed monument (explain)

On _____ placed a _____

SKETCH OF REFERENCE TIES



RAMSEY COUNTY
NAD83 (1986)

MONUMENT 386

X= 582030.672 (Easting)
Y= 181287.048 (Northing)

ALL DISTANCES ARE SHOWN IN U.S. SURVEY FEET.
BEARINGS ARE FOR TIE REFERENCE PURPOSES ONLY.

Statements of evidence relative to this corner are on the following page.

I hereby certify that this document was prepared by me or under my direct supervision and that I am a duly Licensed Land Surveyor under the laws of the State of Minnesota.

Daniel D. Baar 7-24-12
Daniel D. Baar Date
Minnesota License No. 45816

- County Surveyor
 Deputy County Surveyor Land Surveyor

OFFICE OF COUNTY SURVEYOR
County of Ramsey

I hereby certify that this document was filed in the County Surveyor's office this 24th day of July, 20 12.

Craig W. Hinzman
Craig W. Hinzman, L.S.
Ramsey County Surveyor

MONUMENT 386

East Quarter Corner of Section 8, Township 29 North, Range 22 West

Set 1/4 Section post, W. Oak 15 N60°W 1.30, November 29, 1847.

The 1/4 Corner between Section 8 and 9 was fixed in June, 1891, set monument 1896.

Tied granite monument down 1.0 ft., June, 1965.

Tied granite monument down 1.0 ft., June, 1968.

Found a cast iron monument, 1974 (Tie to power pole matches the ties taken from the granite monument in June, 1968).

Checked monument, September 12, 1977.

Tied monument, June 22, 1987.

Checked monument, August 10, 1990.

Retied monument, down +/-0.5 ft., April 27, 1995.

Set sign and post 6 ft. westerly of monument, July 29, 1998.

Retied monument, August 8, 2006.

Retied cast iron monument, down +/-0.6 ft, June 30, 2011.