

MONUMENT 385

CERTIFICATE OF LOCATION OF FOUND MONUMENT

Center of Section 8, Township 29 North, Range 22 West, County of Ramsey, State of Minnesota.

At the corner location shown on the sketch

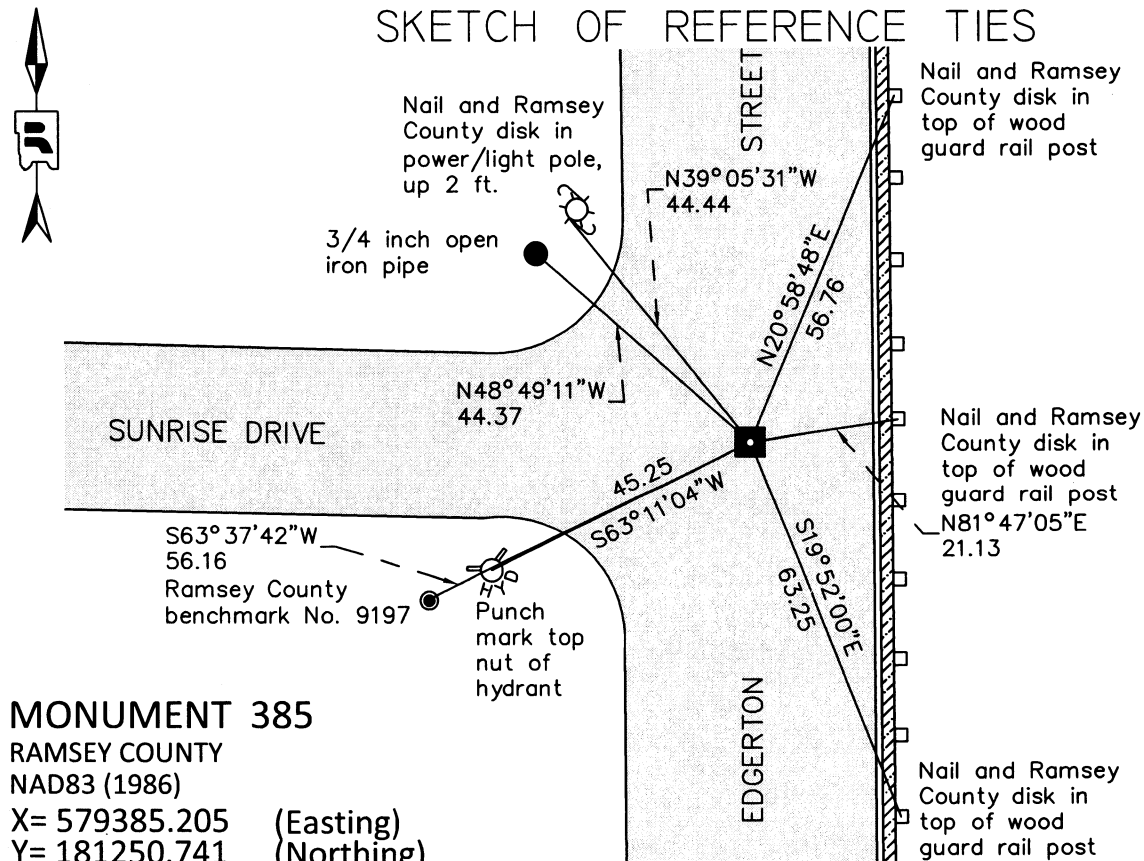
On September 12, 2016 found a 4 1/2 inch cast iron monument, down 0.3 ft in bituminous road.

Removed monument for road milling; exposed granite monument underneath.

left monument as found raised/lowered monument removed monument (explain)

On September 12, 2016 placed a manhole assembly over granite monument; tied granite monument.

SKETCH OF REFERENCE TIES



MONUMENT 385
 RAMSEY COUNTY
 NAD83 (1986)
 X= 579385.205 (Easting)
 Y= 181250.741 (Northing)
 NAD83 (2011)
 X= 579384.768 (Easting)
 Y= 181251.344 (Northing)

ALL DISTANCES ARE SHOWN IN U.S. SURVEY FEET.
 BEARINGS ARE FOR TIE REFERENCE PURPOSES ONLY.

Statements of evidence relative to this corner are on the following page.

I hereby certify that this survey, plan, or report was prepared by me or under my direct supervision, that I am a duly Licensed Land Surveyor under the laws of the state of Minnesota, and that this certificate is correct and complete to the best of my knowledge and belief.

Daniel D. Baar 10-4-16
 Daniel D. Baar Date
 Deputy County Surveyor
 Minnesota License No. 45816

OFFICE OF COUNTY SURVEYOR
 County of Ramsey

I hereby certify that this document was filed in the County Surveyor's office this 4th day of October, 2016.

Craig W. Hinzman
 Craig W. Hinzman, L.S.
 Ramsey County Surveyor

MONUMENT 385

Center of Section 8, Township 29 North, Range 22 West

+/- 1895	The Center of Section 8 appears to have been established at this time based on notes of surrounding monuments. Notes describing the establishment of the center monument have not been found. The monument is shown on the map only. Ramsey County Resurvey notes.
September 18, 1974	Found a granite monument, down 4 in. and tied. Ramsey County Surveyor's Office
September 12, 1977	Checked monument. Ramsey County Surveyor's Office
August 10, 1990	Found a cast iron monument, probably a 4 1/2 in. monument with the date of placement unknown; tied. Ramsey County Surveyor's Office
December 9, 1999	Retied monument, down +/-0.2 ft. Ramsey County Surveyor's Office
June 29, 2006	Retied monument. Ramsey County Surveyor's Office
July 5, 2011	Retied cast iron monument, down 0.3 ft. in bituminous road. Ramsey County Surveyor's Office
May 19, 2016	Tied cast iron monument for removal during road reconstruction; checked local ties. Ramsey County Surveyor's Office
September 12, 2016	Private contractor removed a 4 1/2 inch cast iron monument in the bituminous roadway during construction. Contractor exposed an 8 inch by 8 inch granite monument down 6 inches that was flush in the old concrete road surface. Ramsey County Surveyors Office checked local ties. Manhole assembly placed over granite monument by private contractor.