

MONUMENT 383

CERTIFICATE OF LOCATION OF SECTION SUBDIVISION MONUMENT

Center of Section 7, Township 29 North, Range 22 West, County of Ramsey, State of Minnesota.

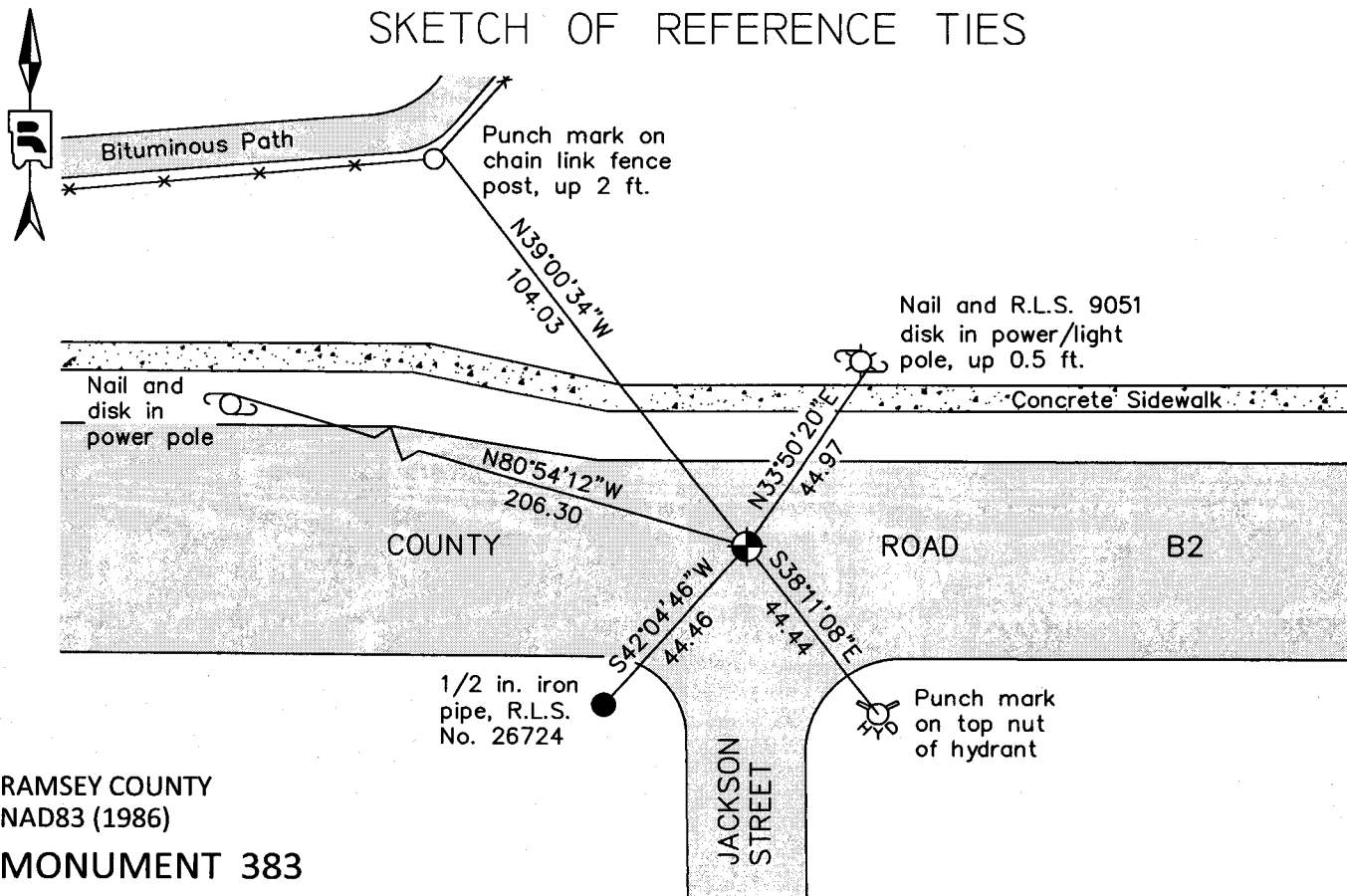
At the corner location shown on the sketch

On July 5, 2011 found a cast iron monument, within a cast iron manhole assembly.

left monument as found raised/lowered monument removed monument (explain)

On _____ placed a _____

SKETCH OF REFERENCE TIES



RAMSEY COUNTY
NAD83 (1986)
MONUMENT 383

X= 574134.649 (Easting)
Y= 181211.084 (Northing)

ALL DISTANCES ARE SHOWN IN U.S. SURVEY FEET.
BEARINGS ARE FOR TIE REFERENCE PURPOSES ONLY.

Statements of evidence relative to this corner are on the following page.

I hereby certify that this document was prepared by me or under my direct supervision and that I am a duly Licensed Land Surveyor under the laws of the State of Minnesota.

Daniel D. Baar 7-24-12

Daniel D. Baar
Minnesota License No. 45816

County Surveyor Land Surveyor
 Deputy County Surveyor

OFFICE OF COUNTY SURVEYOR
County of Ramsey

I hereby certify that this document was filed in the County Surveyor's office this 24th day of July, 20 12.

Craig W. Hinzman
Craig W. Hinzman, L.S.
Ramsey County Surveyor

MONUMENT 383

Center of Section 7, Township 29 North, Range 22 West

Fixed the Center of Section 7 by Intersection and set monument October 23, 1900.

Found granite monument flush, 1974.

Checked monument, September 12, 1977.

Tied monument, March 12, 1984.

Retied monument, August 10, 1990.

Retied monument, December 30, 2002.

Granite monument removed during construction, June, 2005.

Reestablished monument position from ties taken prior to construction,
June 8, 2006.

Set 20 in. cast iron monument down 9 in. within a cast iron manhole assembly, June
12, 2006.

Tied monument, June 13, 2006.

Retied cast iron monument, within a cast iron manhole assembly, July 5, 2011.