

MONUMENT 382

CERTIFICATE OF LOCATION OF GOVERNMENT CORNER

East Quarter Corner of Section 12, Township 29 North, Range 23 West, County of Ramsey, State of Minnesota.

At the corner location shown on the sketch

On May 24, 2010 found a cast iron monument; tied out for removal during road reconstruction.

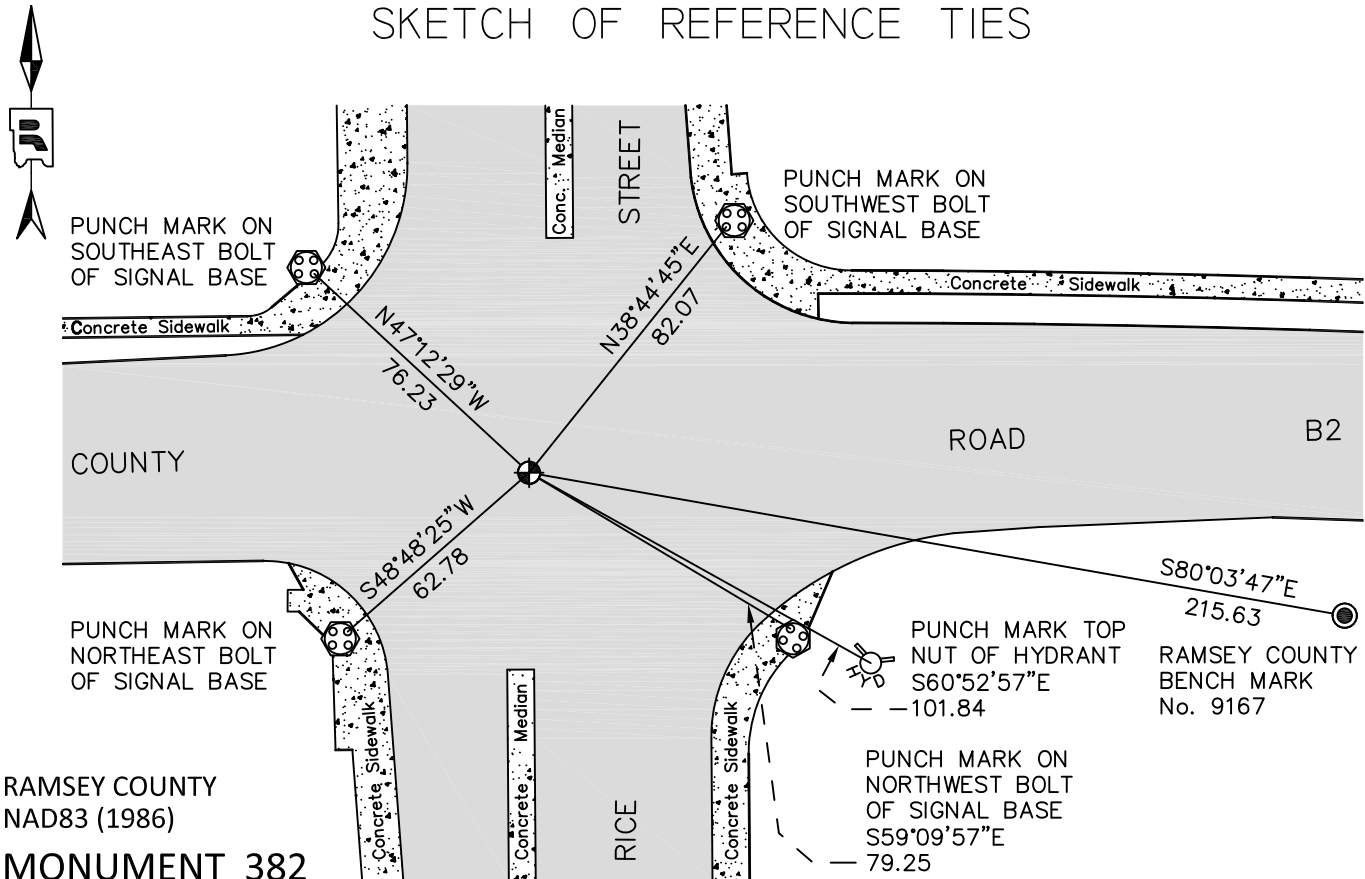
left monument as found

raised/lowered monument

removed monument (explain)

On September 12, 2011 placed a cast iron monument, within a cast iron manhole assembly.

SKETCH OF REFERENCE TIES



RAMSEY COUNTY
NAD83 (1986)

MONUMENT 382

X= 571729.217 (Easting)
Y= 181213.008 (Northing)

ALL DISTANCES ARE SHOWN IN U.S. SURVEY FEET.
BEARINGS ARE FOR TIE REFERENCE PURPOSES ONLY.

Statements of evidence relative to this corner are on the following page.

I hereby certify that this document was prepared by me or under my direct supervision and that I am a duly Licensed Land Surveyor under the laws of the State of Minnesota.

Daniel D. Baar Date
Minnesota License No. 45816

County Surveyor
 Deputy County Surveyor

Land Surveyor

OFFICE OF COUNTY SURVEYOR
County of Ramsey

I hereby certify that this document was filed in the County Surveyor's office this _____ day of _____, 20 _____.

Craig W. Hinzman, L.S.
Ramsey County Surveyor

MONUMENT 382

East Quarter Corner of Section 12, Township 29 North, Range 23 West

Set post at Quarter Section Corner, White Oak 22 S22°E 50, Bur Oak 8 N12°E 39, October 8, 1847.

In establishing the 1/4 Corner between Section 12, T. 29, R. 23 and Section 7, T. 29, R. 22, I found old lot stakes and also Block Corners and from said stakes, I fixed the 1/4 Section Corner and set monument; no witness trees, April, 1895 - Per Section 12, T. 29, R. 23 notes.

The 1/4 Corner between Section 7, T. 29, R. 22 and Section 12, T. 29, R. 23 was fixed from Lot and Block Corners which were found in Section 12 and set monument, May, 1895 - Per Section 7, T. 29, R. 22 notes.

Found a cast iron monument flush, 1974. (The origin of the cast iron monument has not been determined).

Checked monument, July 15, 1977.

Tied monument (down +/-0.2 ft.), June 7, 1990.

Tied monument for possible removal, June 24, 1992.

Retied monument, July 18, 2002.

Retied monument, August 6, 2007.

Tied out monument for removal during road reconstruction, May 24, 2010.

Set a 20 in. cast iron monument within a cast iron manhole assembly using construction ties; tied, September 12, 2011.