

# MONUMENT 381

## CERTIFICATE OF LOCATION OF FOUND MONUMENT

Center of Section 12, Township 29 North, Range 23 West, County of Ramsey, State of Minnesota.

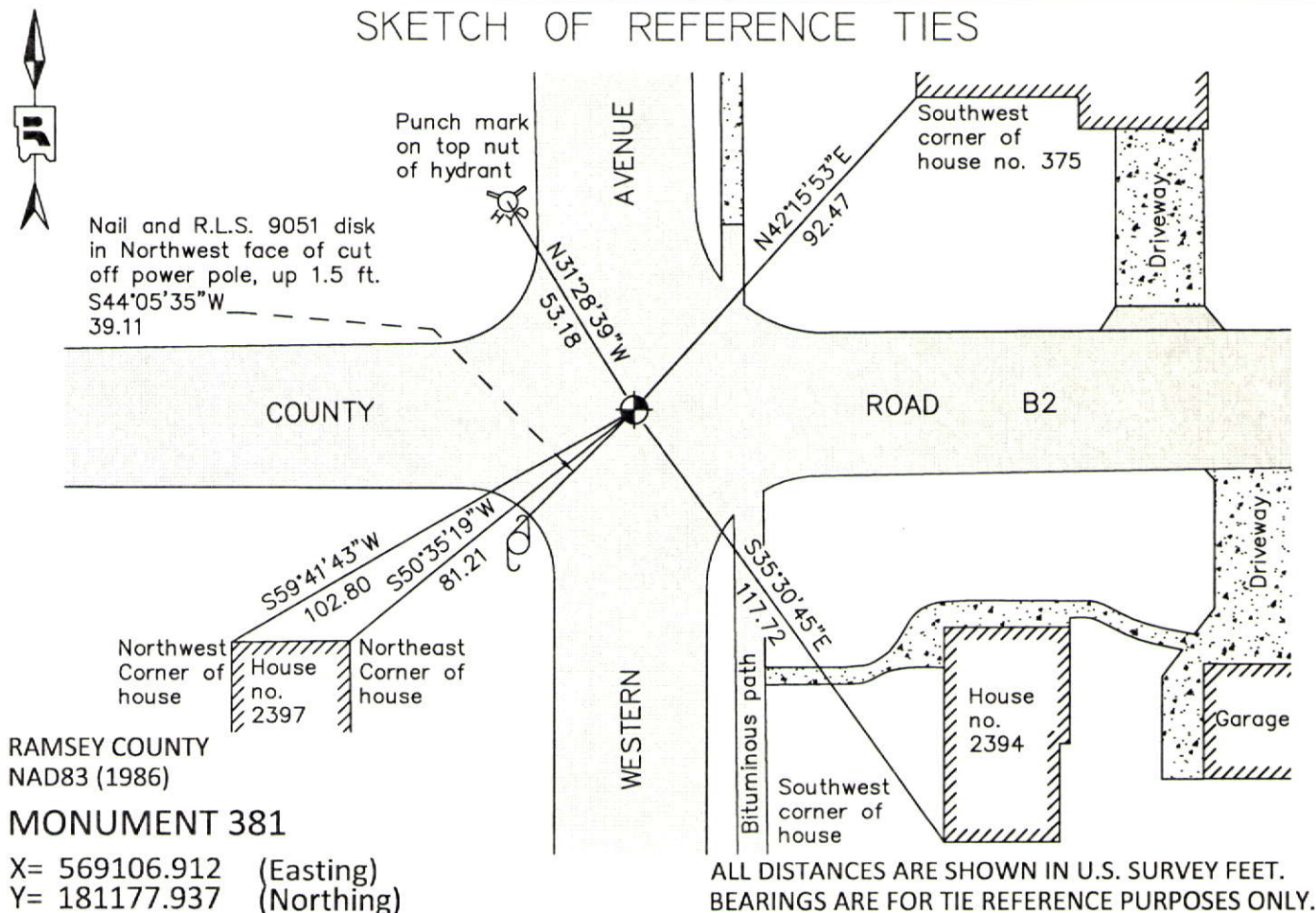
At the corner location shown on the sketch

On June 25, 2012 found a "Ramsey County" cast iron monument within a cast iron manhole assembly.

left monument as found       raised/lowered monument       removed monument (explain)

On \_\_\_\_\_ placed a \_\_\_\_\_

### SKETCH OF REFERENCE TIES



RAMSEY COUNTY  
NAD83 (1986)  
**MONUMENT 381**

X= 569106.912 (Easting)  
Y= 181177.937 (Northing)

ALL DISTANCES ARE SHOWN IN U.S. SURVEY FEET.  
BEARINGS ARE FOR TIE REFERENCE PURPOSES ONLY.

Statements of evidence relative to this corner are on the following page.

I hereby certify that this document was prepared by me or under my direct supervision and that I am a duly Licensed Land Surveyor under the laws of the State of Minnesota.

Daniel D. Baar      12-30-14  
Daniel D. Baar      Date

Minnesota License No. 45816

- County Surveyor       Deputy County Surveyor       Land Surveyor

OFFICE OF COUNTY SURVEYOR  
County of Ramsey

I hereby certify that this document was filed in the County Surveyor's office this 30th day of December, 20 14.

Craig W. Hinzman  
Craig W. Hinzman, L.S.  
Ramsey County Surveyor

# MONUMENT 381

Center of Section 12, Township 29 North, Range 23 West

Fixed the Center of Section 12 by Intersection and set monument, May, 1895.

HEATHERWOOD plat shows a cast iron monument at location, June 29, 1969.

Found a cast iron monument flush and tied, July 31, 1974.

Tied out monument and removed, August 29, 1988.

Set a 20 in. cast iron monument, 1990.

Tied monument, July 18, 2002.

Tied out monument for removal during road resurfacing, May 30, 2007.

Set a 20 in. cast iron monument within a cast iron manhole assembly, June 27, 2007.

Tied monument, August 3, 2007.

Checked condition of cast iron monument in cast iron manhole assembly and ties,  
June 25, 2012.