

# MONUMENT 38

## CERTIFICATE OF LOCATION OF GOVERNMENT CORNER

East Quarter Corner of Section 1, Township 30 North, Range 23 West,  
County of Ramsey, State of Minnesota.

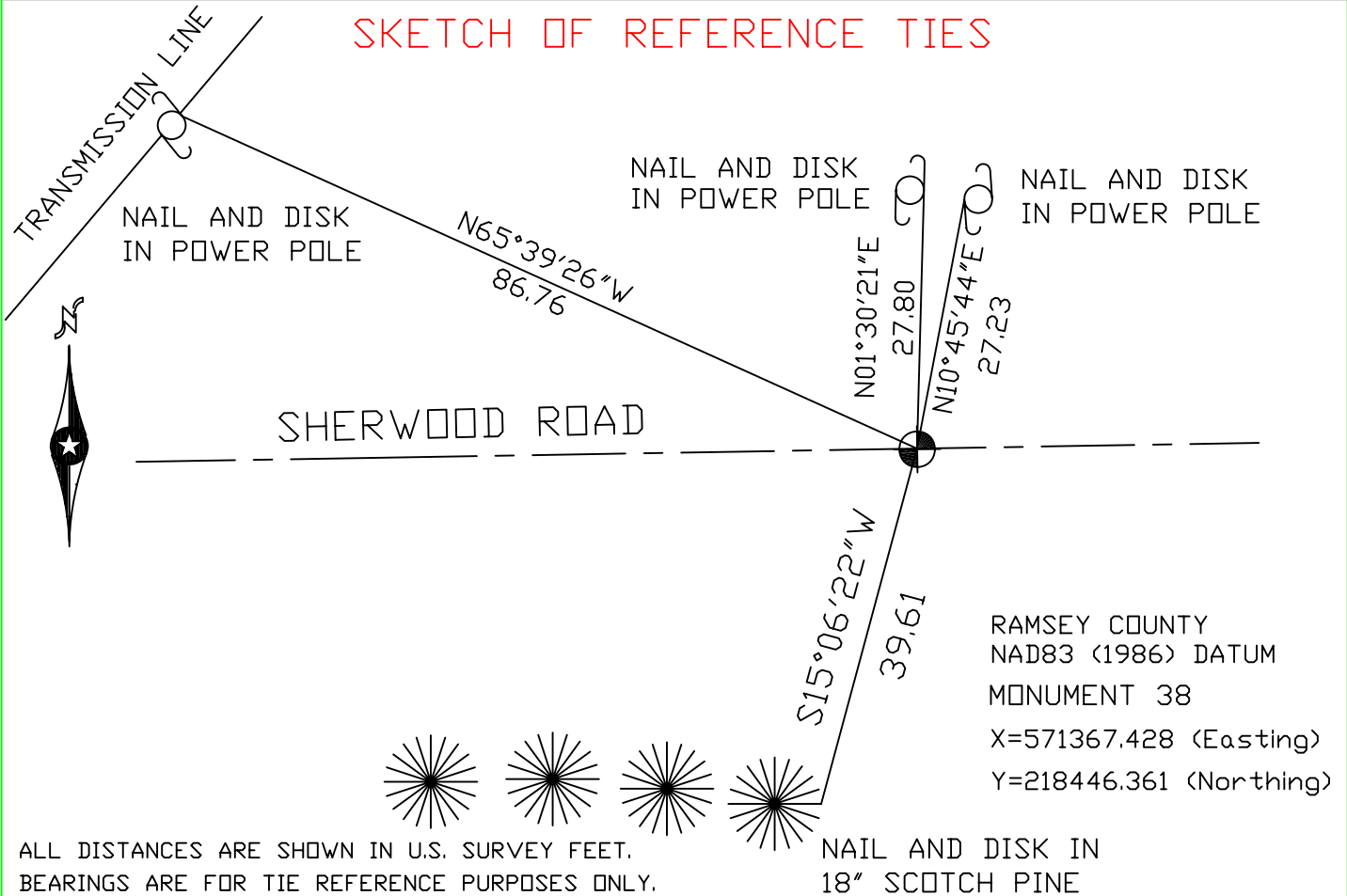
At the corner location shown on the sketch

On July 9, 2004 found a cast iron monument.

left monument as found,  lowered monument,  removed monument (explain)

On \_\_\_\_\_ placed a \_\_\_\_\_

### SKETCH OF REFERENCE TIES



Statements of evidence relative to this corner are on the following page(s).

I hereby certify that this document and the data contained herein was prepared by me or under my direct supervision this \_\_\_\_\_ day of \_\_\_\_\_, 20\_\_\_\_.

SIGNATURE

Minnesota License No. \_\_\_\_\_

Land Surveyor       Professional Engineer

County Surveyor       County Engineer

OFFICE OF COUNTY SURVEYOR

County of Ramsey

I hereby certify that this document was filed in the County Surveyor's office on this \_\_\_\_\_ day of \_\_\_\_\_, 20\_\_\_\_.

David D. Claypool, P.L.S., County Surveyor

By \_\_\_\_\_, Deputy

## MONUMENT 38

Found a granite monument, down 4 in. Set a cast iron cap, in concrete, June 4, 1975.

Removed cast iron monument cap for construction and tied out monument, April, 1990.

Placed a 20 in. cast iron monument, July 17, 1990.

Retied monument, July 18, 1990.

Placed sign and post +/-20 ft. north of monument, July 9, 1992.

Placed cement around monument, October 21, 1993.

Retied monument, October 11, 2000.

Retied monument, July 9, 2004.