

# MONUMENT 379

## CERTIFICATE OF LOCATION OF FOUND MONUMENT

Center of Section 11, Township 29 North, Range 23 West, County of Ramsey, State of Minnesota.

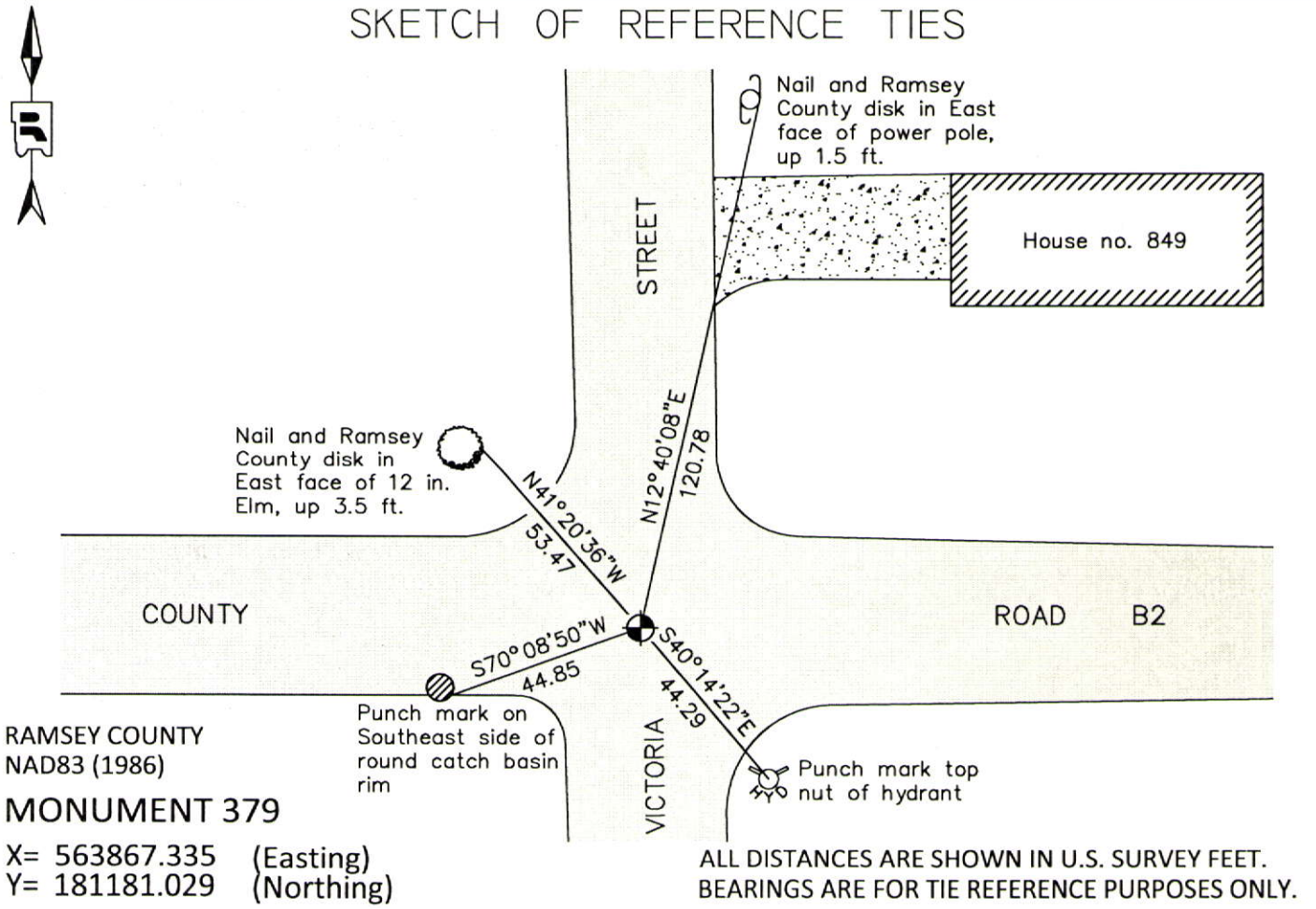
At the corner location shown on the sketch

On June 20, 2012 found a "Ramsey County" cast iron monument within a cast iron manhole assembly.

left monument as found       raised/lowered monument       removed monument (explain)

On \_\_\_\_\_ placed a \_\_\_\_\_

### SKETCH OF REFERENCE TIES



Statements of evidence relative to this corner are on the following page.

I hereby certify that this document was prepared by me or under my direct supervision and that I am a duly Licensed Land Surveyor under the laws of the State of Minnesota.

Daniel D. Baar      12-30-14  
Daniel D. Baar      Date  
Minnesota License No. 45816

County Surveyor       Land Surveyor  
 Deputy County Surveyor

OFFICE OF COUNTY SURVEYOR  
County of Ramsey

I hereby certify that this document was filed in the County Surveyor's office this 30th day of December, 20 14.

Craig W. Hinzman  
Craig W. Hinzman, L.S.  
Ramsey County Surveyor

# MONUMENT 379

Center of Section 11, Township 29 North, Range 23 West

The Center of Section 11 was fixed, October 30, 1897.

Set monument, November 10, 1897.

C. W. MICHAEL FIRST ADDITION plat shows iron monument at described location, January 29, 1947.

Checked monument, March, 1948.

New ties, March, 1959.

Found a cast iron monument flush and tied, July 23, 1974.

Tied and removed cast iron monument, August 29, 1988.

Checked monument, August 10, 1990.

Retied monument, July 18, 2002.

Tied out monument for removal during road resurfacing, May 30, 2007.

Set 20 in. cast iron monument within a cast iron manhole assembly, June 25, 2007.

Tied out monument, August 3, 2007.

Checked condition of cast iron monument within a cast iron manhole assembly and ties, June 20, 2012.