

# MONUMENT 375

## CERTIFICATE OF LOCATION OF SECTION SUBDIVISION MONUMENT

Center of Section 9, Township 29 North, Range 23 West, County of Ramsey, State of Minnesota.

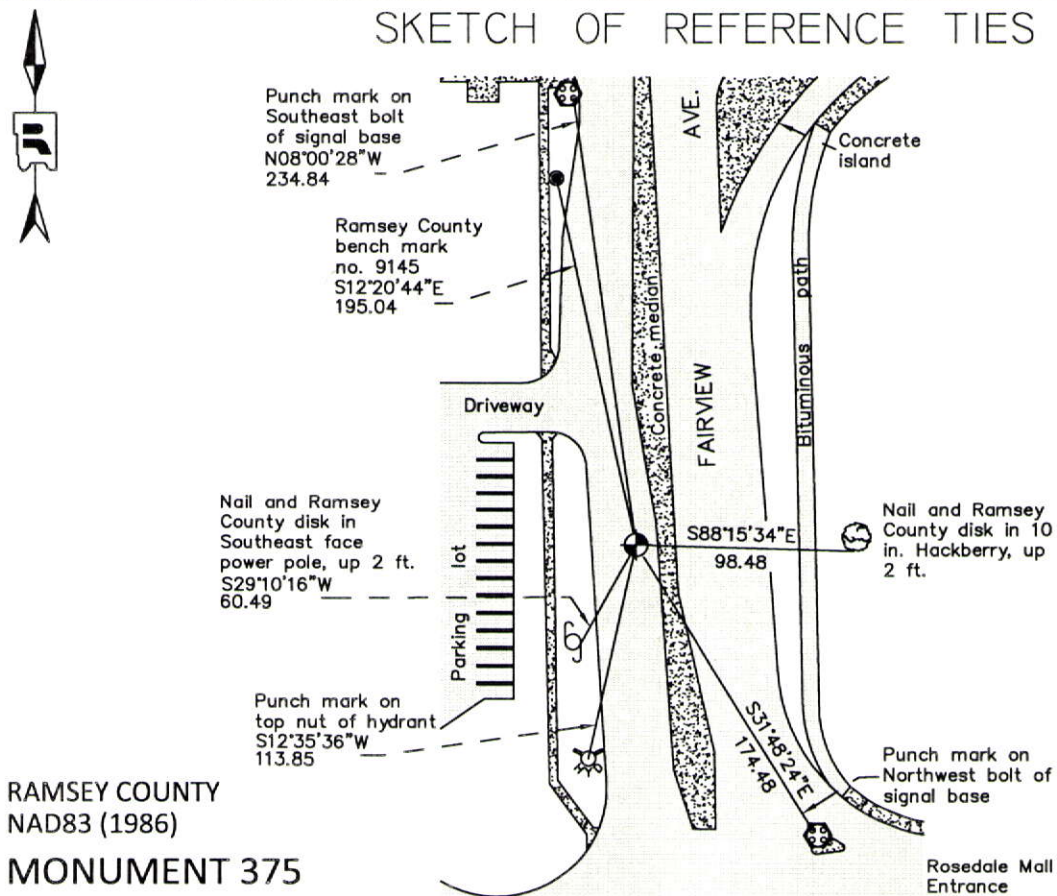
At the corner location shown on the sketch

On June 21, 2012 found a "Ramsey County" cast iron monument within a cast iron manhole assembly.

left monument as found     
  raised/lowered monument     
  removed monument (explain)

On \_\_\_\_\_ placed a \_\_\_\_\_

### SKETCH OF REFERENCE TIES



RAMSEY COUNTY  
NAD83 (1986)

### MONUMENT 375

X= 553354.406 (Easting)  
Y= 181107.248 (Northing)

ALL DISTANCES ARE SHOWN IN U.S. SURVEY FEET.  
BEARINGS ARE FOR TIE REFERENCE PURPOSES ONLY.

Statements of evidence relative to this corner are on the following page.

I hereby certify that this document was prepared by me or under my direct supervision and that I am a duly Licensed Land Surveyor under the laws of the State of Minnesota.

Daniel D. Baar 12-30-14  
 Daniel D. Baar Date  
 Minnesota License No. 45816

- County Surveyor     
  Deputy County Surveyor     
  Land Surveyor

OFFICE OF COUNTY SURVEYOR  
County of Ramsey

I hereby certify that this document was filed in the County Surveyor's office this 30th day of December, 20 14.

Craig W. Hinzman  
 Craig W. Hinzman, L.S.  
 Ramsey County Surveyor

# MONUMENT 375

Center of Section 9, Township 29 North, Range 23 West

Fixed the Center of Section 9 by intersection, January 7, 1898.

Set monument, May 9, 1898.

Checked monument, November, 1933.

ROSEDALE CENTER SECOND ADDITION shows a stone monument at location,  
June 12, 1969.

Checked monument, June, 1969.

Found a cast iron monument in place, 1974.

Checked monument, July 15, 1977.

Tied monument, August 13, 1990.

Found monument with top broken off, down 0.2 ft., June 21, 1999.

Checked ties and removed cast iron monument. Set a 20 in. cast iron monument,  
down 18 in., within a cast iron manhole assembly; tied monument, July 12, 2001.

Cast iron manhole assembly removed for road milling project, July, 2004.

Retied monument, July 15, 2004.

Retied monument, September 24, 2007.

Checked cast iron monument within cast iron manhole assembly and ties,  
June 21, 2012.