

# MINNESOTA DEPARTMENT OF TRANSPORTATION CERTIFICATE OF LOCATION OF GOVERNMENT CORNER

WITNESS CORNER \_\_\_\_\_, Section 8, Township 29 North, Range 23 West,  
4th Principal Meridian Survey, Ramsey County, Minnesota.

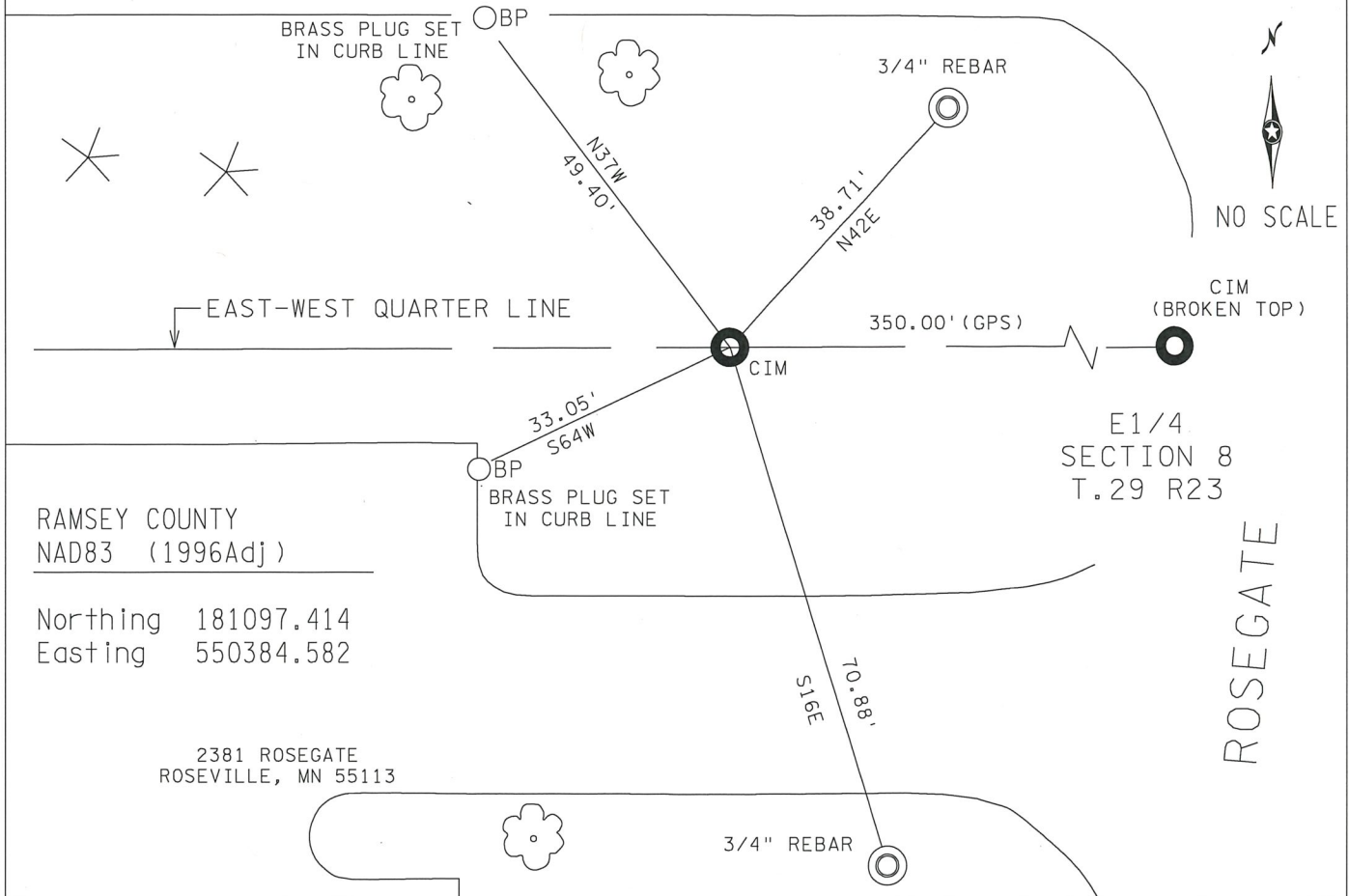
At the corner location shown on the sketch:

- On \_\_\_\_\_
- left monument as found,     lowered monument,     removed monument (explain)
- 
- On SEPTEMBER 8th, 2022 placed a CAST IRON MONUMENT ON THE EAST-WEST QUARTER LINE, 350' WEST OF E1/4 SECTION 8

Corner reference ties measured on SEPTEMBER 8TH, 2022

Statement of evidence relative to this corner location is on back of page.

Tie distances are horizontal distances measured with a total station EDM unless otherwise noted.



I hereby certify that this document and the data contained herein was prepared by me or under my direct supervision. I further certify that this document conforms to applicable portions of Minnesota State Statute 381.12.

Michael D. Nelson

4-24-2023

Michael D. Nelson, Mn/DOT Surveys  
Minnesota License No. 49546

Date

**Witness Corner to East Quarter Corner, Section 8, T. 29 N. - R. 23 W.**

Statement of Evidence

2022 September 8th, MnDOT survey personnel set a cast iron monument down 0.1 feet. Monument was set 350.00 feet Westerly of the East Quarter Corner and on the East-West Quarter Line. 4 tie positions were set and recorded.

Summary and Conclusion:

Due to the safety risk at the East Quarter Corner of Section 8 Township 29 Range 23, MnDOT has set a corner to witness this point.

# MINNESOTA DEPARTMENT OF TRANSPORTATION CERTIFICATE OF LOCATION OF GOVERNMENT CORNER

EAST QUARTER CORNER, Section 8, Township 29 North, Range 23 West,  
4th Principal Meridian Survey, Ramsey County, Minnesota.

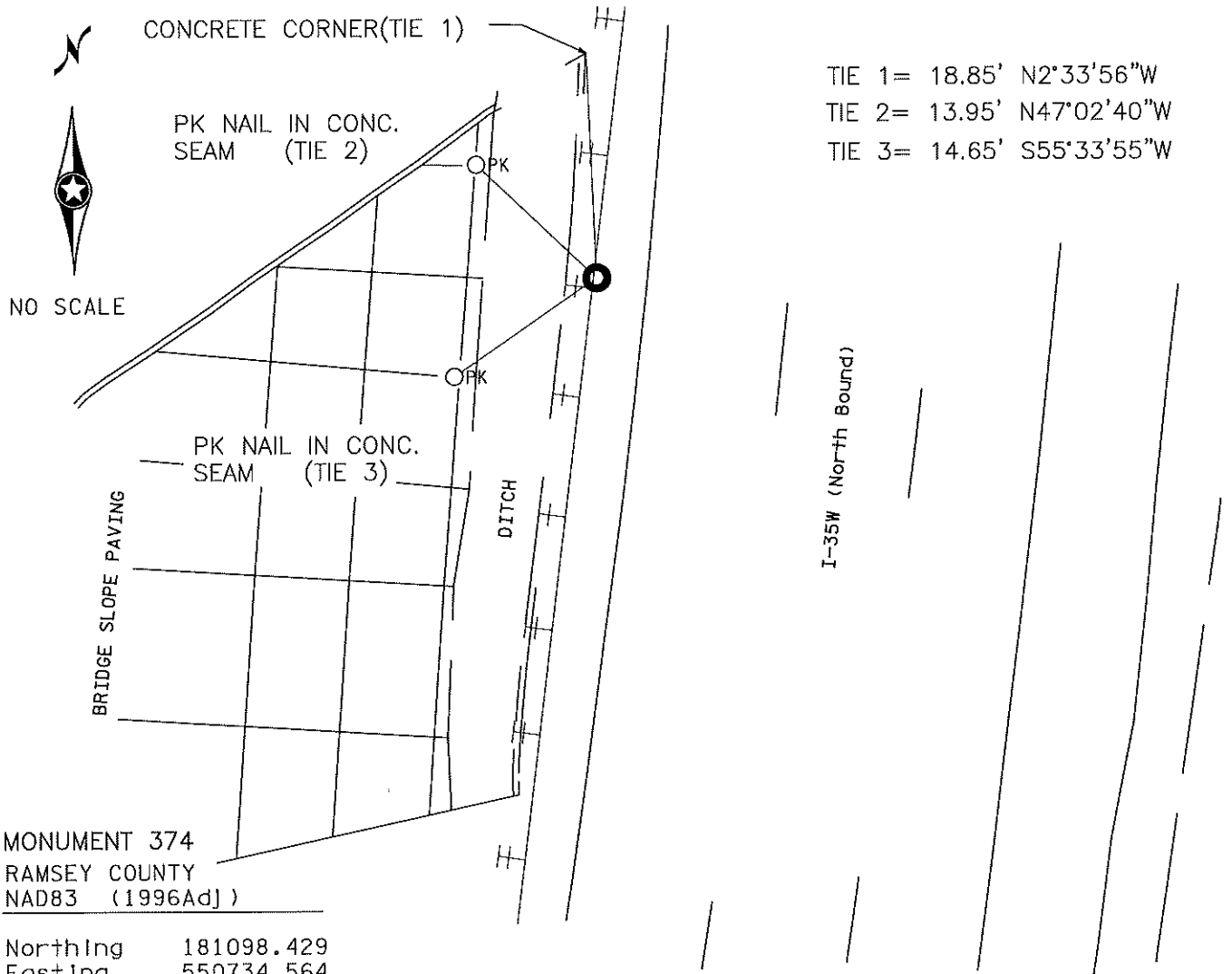
At the corner location shown on the sketch:

- On April 13th, 2022 found A DAMAGED CAST IRON MONUMENT (BROKEN TOP)  
 left monument as found,     lowered monument,     removed monument (explain)

On \_\_\_\_\_ placed a \_\_\_\_\_

Corner reference ties measured on APRIL 13TH, 2022

Statement of evidence relative to this corner location is on back of page.



- TIE 1= 18.85' N2°33'56"W
- TIE 2= 13.95' N47°02'40"W
- TIE 3= 14.65' S55°33'55"W

MONUMENT 374  
RAMSEY COUNTY  
NAD83 (1996Adj)

Northing 181098.429  
Easting 550734.564

Tie distances are horizontal distances measured with a total station EDM.

I hereby certify that this document and the data contained herein was prepared by me or under my direct supervision. I further certify that this document conforms to applicable portions of Minnesota State Statute 381.12.

*Michael D. Nelson*

Michael D. Nelson, Mn/DOT Surveys  
Minnesota License No. 49546

4/29/22

Date

**East Quarter Corner, Section 8, T. 29 N. - R. 23 W.****Statement of Evidence**

- 1847 November 2nd, Isaac N Higbee, Deputy Surveyor United States Public Land Surveys indicates in his field notes that he "Set 1 / 4 Section Post"  
One tie was recorded:  
Bur Oak 12 inch diameter S 39 E 1.48 links
- 1896 August, Ramsey County Resurvey Noted Fixed 1/4 corner between Sections 8 and 9 from line of old fence running West. Government witness trees gone
- 1898 May 9<sup>th</sup>, Ramsey County Set Monument
- 1969 June 12<sup>th</sup>, Plat of ROSEDALE CENTER SECOND ADDITION shows a Cast Iron Monument at position.
- 1975 June 25<sup>th</sup>, Minnesota Highway Department set cast iron monument.
- 1977 July 15, Ramsey County field crew found cast iron and checked ties.
- 1980 Ramsey County field crew found cast iron top broken-off, base still in place.
- 1983 December 30<sup>th</sup>, Plat of FERRISWOOD shows a Ramsey County Cast Iron Monument at position.
- 1990 August 14<sup>th</sup>, Ramsey County crew removed broken cast iron; placed 20" C.I. and retied.
- 1997 October 23<sup>rd</sup>, Plat of GATEWAY BUSINESS PARK shows a Ramsey County Cast Iron Monument at position.
- 2022 April 13<sup>th</sup>, MnDOT survey personnel found a broken cast iron monument down 0.9 feet. Monument was pushed westerly of the road approximately 0.17' feet. The 3 tie positions are held for a computed NAD83(1996) Ramsey County Coordinate. Due to accessibility and safety reasons this monument will not be maintained anymore, and a witness will be set.

**Summary and Conclusion:**

This Certificate of Location is a perpetuation of the cast iron monument set on August 14<sup>th</sup>, 1990.