

# MONUMENT 373

## CERTIFICATE OF LOCATION OF FOUND MONUMENT

Center of Section 8, Township 29 North, Range 23 West, County of Ramsey, State of Minnesota.

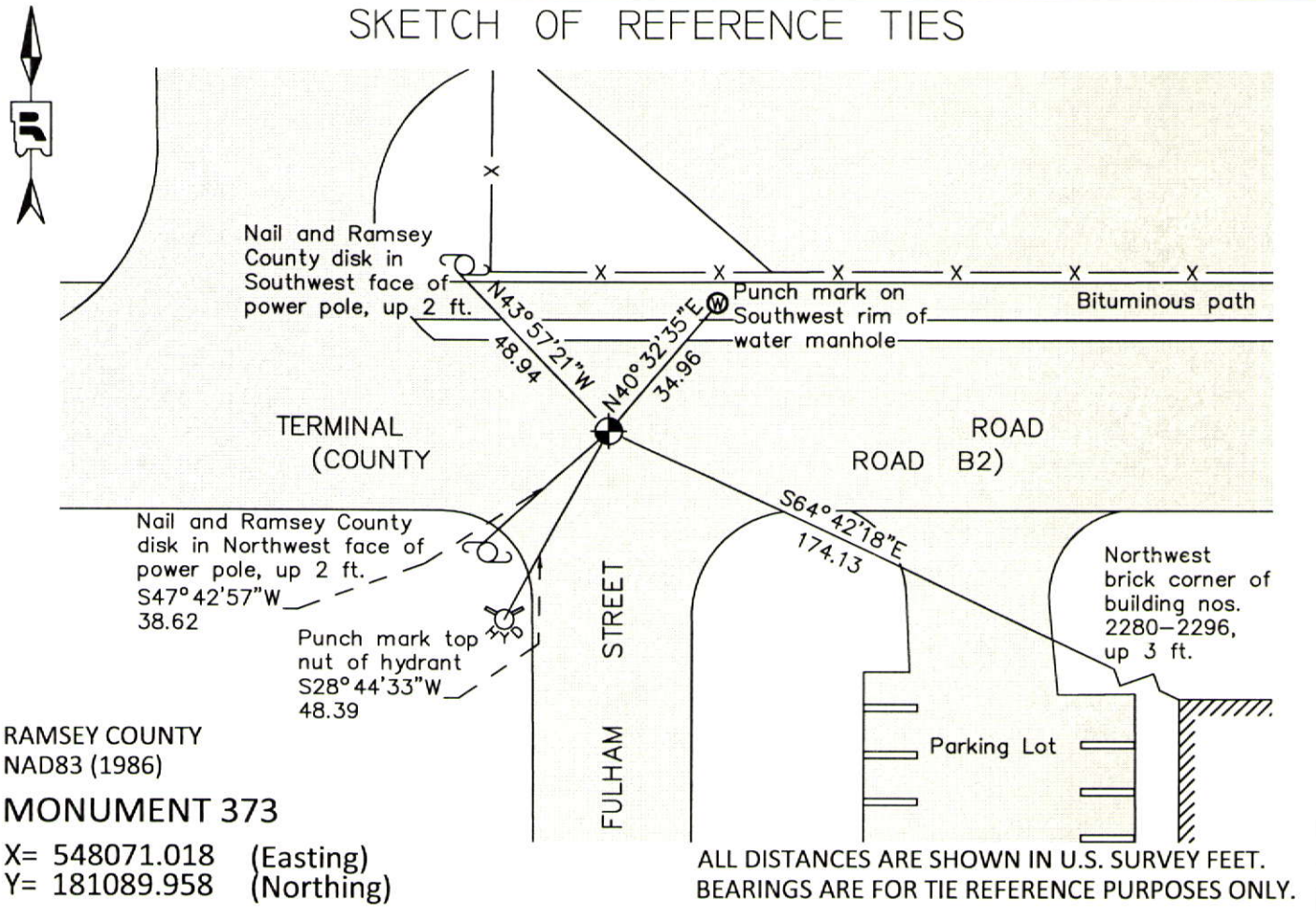
At the corner location shown on the sketch

On June 21, 2012 found a "Ramsey County" cast iron monument, down 0.2 ft. in bituminous road.

left monument as found     
  raised/lowered monument     
  removed monument (explain)

On \_\_\_\_\_ placed a \_\_\_\_\_

### SKETCH OF REFERENCE TIES



Statements of evidence relative to this corner are on the following page.

I hereby certify that this document was prepared by me or under my direct supervision and that I am a duly Licensed Land Surveyor under the laws of the State of Minnesota.

Daniel D. Baar      12-30-14  
 Daniel D. Baar      Date  
 Minnesota License No. 45816

- County Surveyor       Land Surveyor  
 Deputy County Surveyor

OFFICE OF COUNTY SURVEYOR  
 County of Ramsey

I hereby certify that this document was filed in the County Surveyor's office this 30th day of December, 20 14.

Craig W. Hinzman  
 Craig W. Hinzman, L.S.  
 Ramsey County Surveyor

# MONUMENT 373

Center of Section 8, Township 29 North, Range 23 West

Fixed the Center of Section 8 by intersection, January, 1900.

Set monument, April, 1900.

Checked monument, February, 1948.

Reset monument, August 10, 1951.

Found a cast iron monument flush, 1974.

Checked monument, July 15, 1977.

Tied monument, March 12, 1984.

Retied monument, August 13, 1990.

Found monument flush and retied, August 6, 2002.

Retied monument, July 9, 2007.

Checked condition of cast iron monument, down 0.2 ft. in bituminous road, and ties, June 21, 2012.