

MONUMENT 370

CERTIFICATE OF LOCATION OF GOVERNMENT CORNER

North Quarter Corner of Section 12, Township 29 North, Range 22 West, County of Ramsey, State of Minnesota.

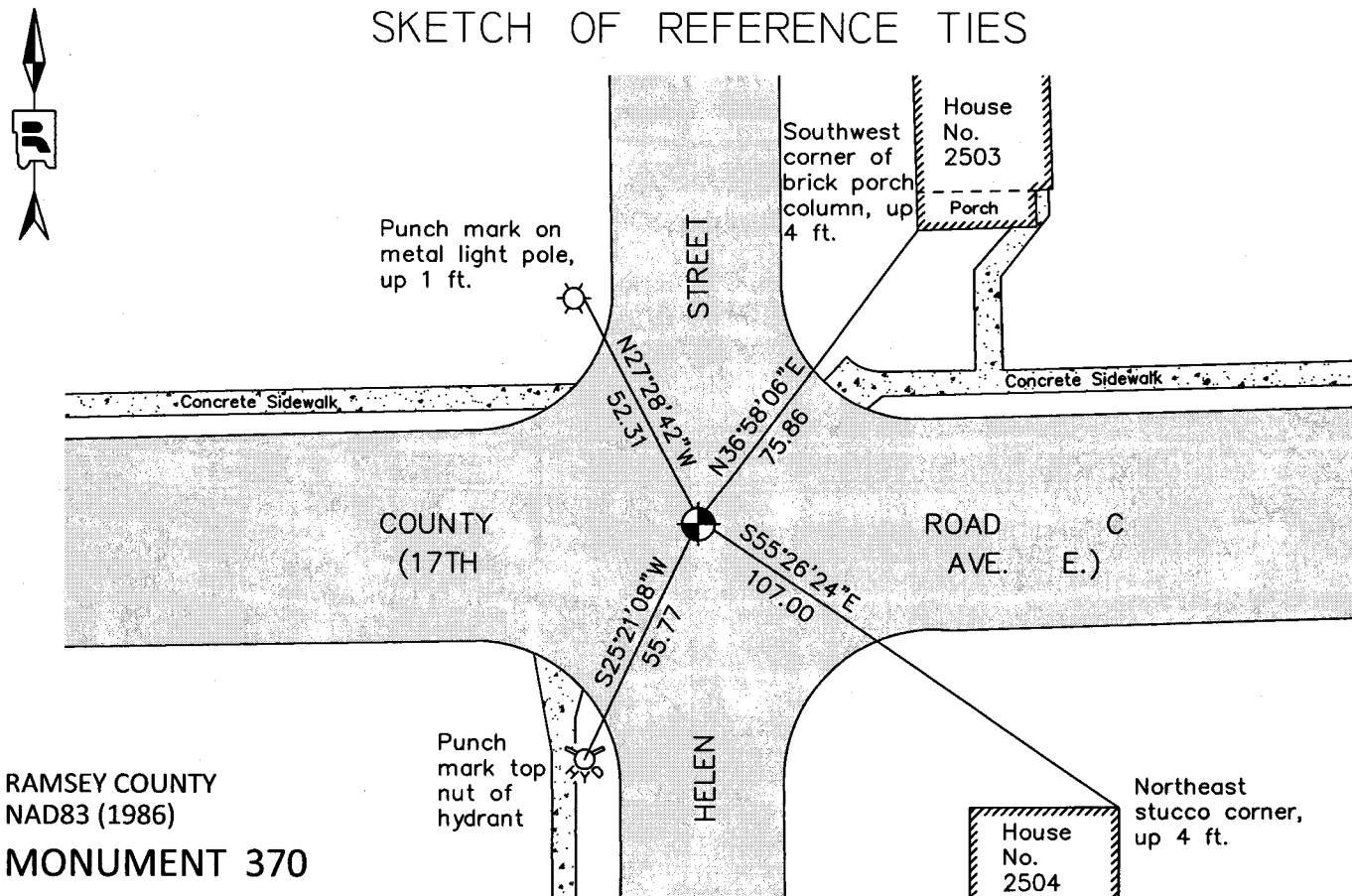
At the corner location shown on the sketch

On July 22, 2011 found a cast iron monument within a cast iron manhole assembly.

left monument as found raised/lowered monument removed monument (explain)

On _____ placed a _____

SKETCH OF REFERENCE TIES



RAMSEY COUNTY
NAD83 (1986)

MONUMENT 370

X= 600455.271 (Easting)
Y= 184082.676 (Northing)

ALL DISTANCES ARE SHOWN IN U.S. SURVEY FEET.
BEARINGS ARE FOR TIE REFERENCE PURPOSES ONLY.

Statements of evidence relative to this corner are on the following page.

I hereby certify that this document was prepared by me or under my direct supervision and that I am a duly Licensed Land Surveyor under the laws of the State of Minnesota.

Daniel D. Baar 7-24-12
Daniel D. Baar Date
Minnesota License No. 45816

- County Surveyor Land Surveyor
 Deputy County Surveyor

OFFICE OF COUNTY SURVEYOR
County of Ramsey

I hereby certify that this document was filed in the County Surveyor's office this 24th day of July, 20 12.

Craig W. Hinzman
Craig W. Hinzman, L.S.
Ramsey County Surveyor

MONUMENT 370

North Quarter Corner of Section 12, Township 29 North, Range 22 West

Set 1/4 Section Post, Bur Oak 10 N57°E 21; "Do" (Bur Oak) 13 S5°E 42, November 29, 1847.

The 1/4 Corner between Sections 1 and 12 was fixed from stakes found in the 4th Addition to North St. Paul and Castle, Government Witness tress gone, December 28, 1898.

Monument set November, 1899.

Found granite monument down 2 in.; set cast iron cap monument, June 14, 1976.

Checked monument, September 11, 1977.

Tied cast iron monument, November 30, 1982.

Retied monument, July 17, 1990.

Retied monument, October 18, 2000.

Monument lowered within a cast iron manhole assembly for mill and overlay project, July 15, 2005.

Tied monument, June 23, 2006.

Retied a cast iron monument within a cast iron manhole assembly, July 22, 2011.