

MONUMENT 37

CERTIFICATE OF LOCATION OF GOVERNMENT CORNER

Center of Section 1, Township 30 North, Range 23 West, County of Ramsey,
State of Minnesota.

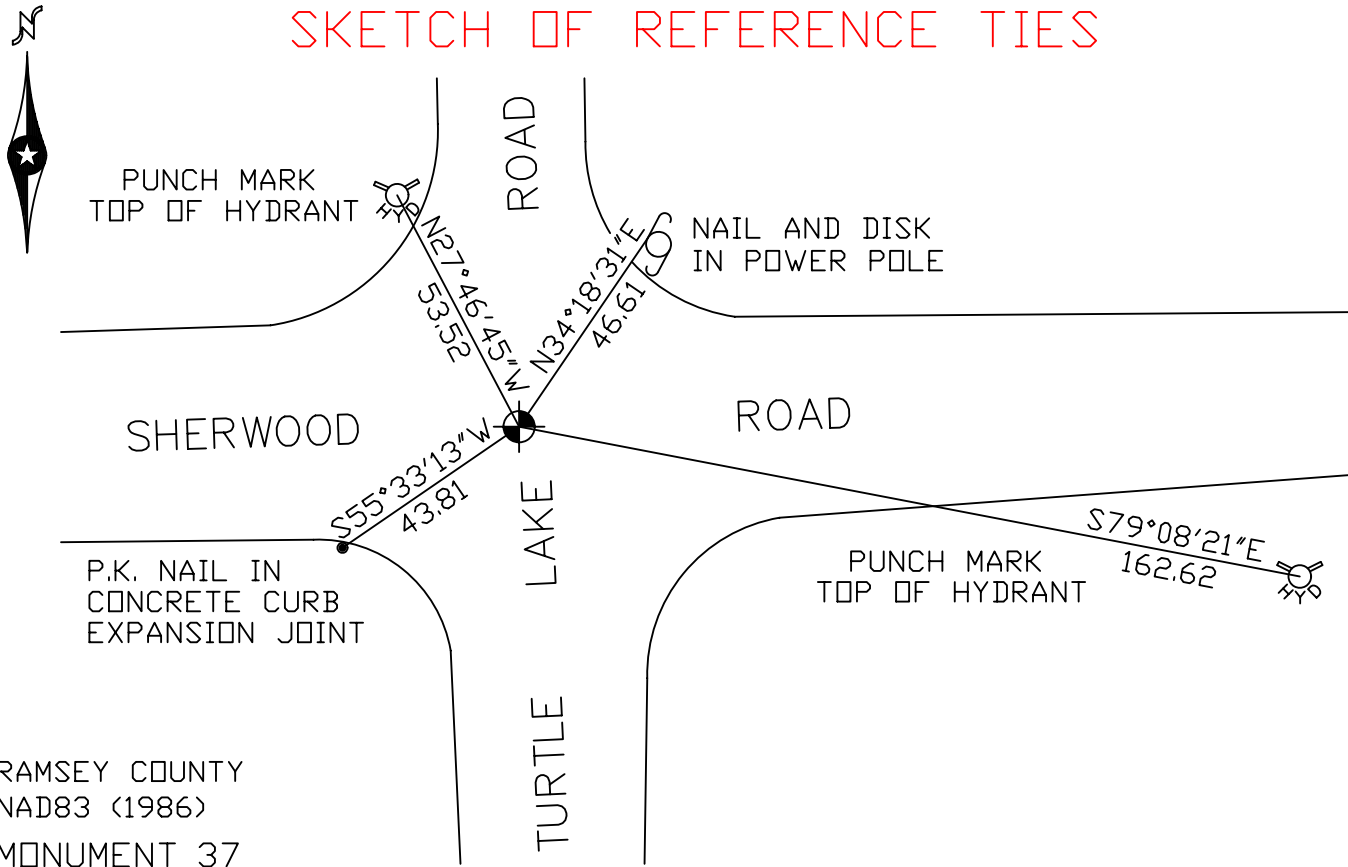
At the corner location shown on the sketch

On November 3, 2009 found a cast iron monument within a cast iron manhole assembly.

left monument as found lowered monument removed monument (explain)

On _____ placed a _____

SKETCH OF REFERENCE TIES



RAMSEY COUNTY
NAD83 (1986)
MONUMENT 37

X= 568728.511 (Easting)
Y= 218401.640 (Northing)

ALL DISTANCES ARE SHOWN IN U.S. SURVEY FEET.
BEARINGS ARE FOR TIE REFERENCE PURPOSES ONLY.

Statements of evidence relative to this corner are on the following page(s).

I hereby certify that this document and the data contained herein was prepared by me or under my direct supervision this _____ day of _____, 20____.

SIGNATURE

Minnesota License No. _____

- County Surveyor
 Deputy County Surveyor Land Surveyor

OFFICE OF COUNTY SURVEYOR
County of Ramsey

I hereby certify that this document was filed in the County Surveyor's office on the _____ day of _____, 20____.

SIGNATURE

Michael D. Fiebiger, P.L.S.
Ramsey County Surveyor

MONUMENT 37

Found cast iron monument down 0.3 ft., retied monument, January 23, 1976.

Raised cast iron monument after construction, May 27, 1976.

Replaced monument after Sherwood Road construction, no date given in field book.

Retied monument, July 16, 1990.

Retied monument, October 11, 2000.

Retied monument, June 9, 2004.

Monument removed for full depth milling operation, August 31, 2005.

Placed a 20 in. cast iron monument within a cast iron manhole assembly and tied out monument, September 18, 2005.

Retied monument, November 3, 2009.