

# MONUMENT 369

## CERTIFICATE OF LOCATION OF GOVERNMENT CORNER

Northeast Corner of Section 11, Township 29 North, Range 22 West, County of Ramsey, State of Minnesota.

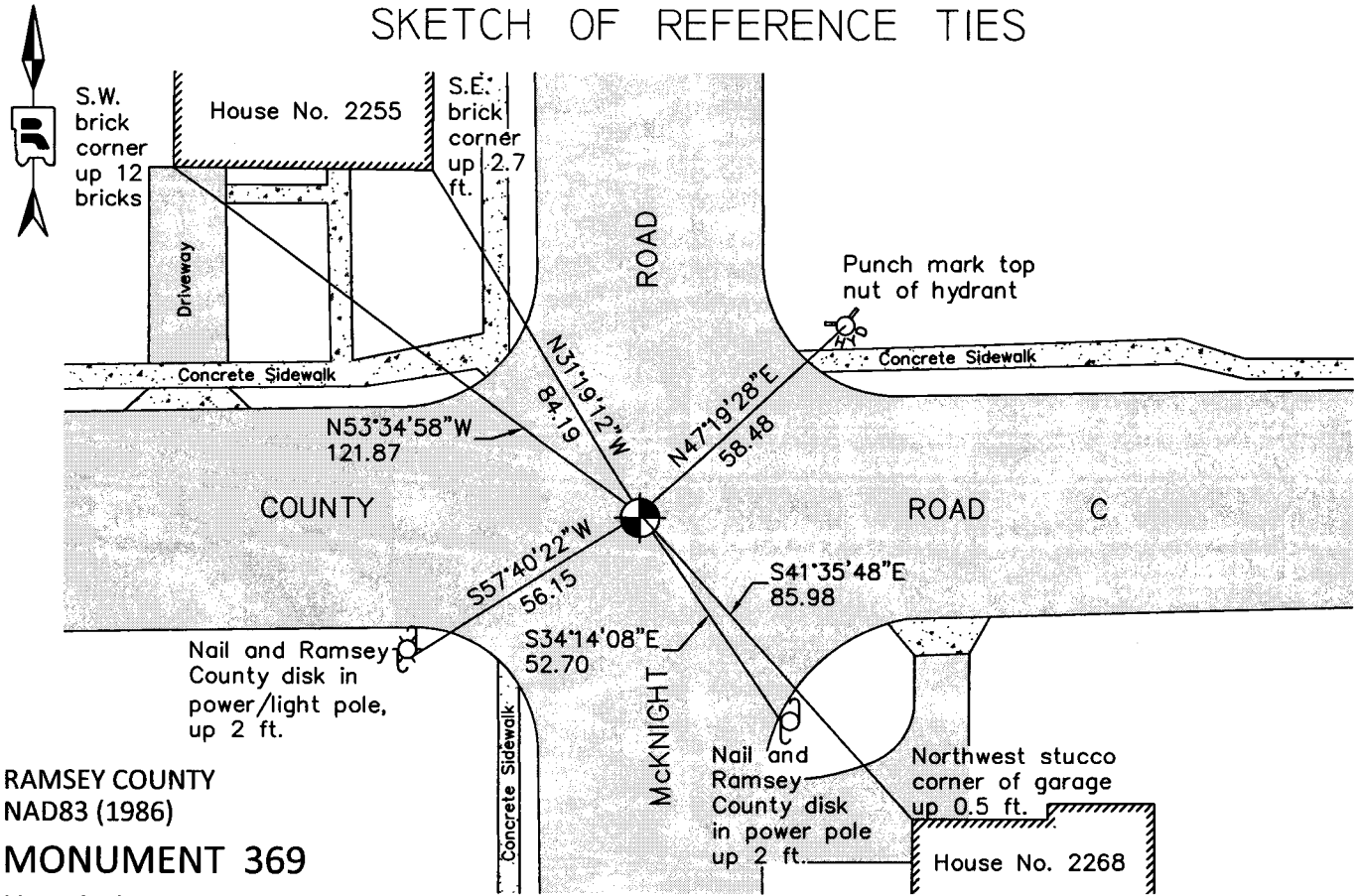
At the corner location shown on the sketch

On July 22, 2011 found a cast iron monument within a cast iron manhole assembly.

left monument as found       raised/lowered monument       removed monument (explain)

On \_\_\_\_\_ placed a \_\_\_\_\_

### SKETCH OF REFERENCE TIES



RAMSEY COUNTY  
NAD83 (1986)  
**MONUMENT 369**

X= 597844.682 (Easting)  
Y= 184016.600 (Northing)

ALL DISTANCES ARE SHOWN IN U.S. SURVEY FEET.  
BEARINGS ARE FOR TIE REFERENCE PURPOSES ONLY.

Statements of evidence relative to this corner are on the following page.

I hereby certify that this document was prepared by me or under my direct supervision and that I am a duly Licensed Land Surveyor under the laws of the State of Minnesota.

Daniel D. Baar      7-20-12

Daniel D. Baar      Date  
Minnesota License No. 45816

- County Surveyor       Land Surveyor  
 Deputy County Surveyor

OFFICE OF COUNTY SURVEYOR  
County of Ramsey

I hereby certify that this document was filed in the County Surveyor's office this 20<sup>th</sup> day of JULY, 20 12.

Craig W. Hinzman

Craig W. Hinzman, L.S.  
Ramsey County Surveyor

# MONUMENT 369

Northeast Corner of Section 11, Township 29 North, Range 22 West

Set Post Corner to Sections 1, 2, 11, & 12, Bur Oak 11 N25°W 21; "Do" (Bur Oak) 9 S60°E 48, November 29th, 1847.

In establishing the Northeast Corner of Section 11, found two Government Witness trees, set monument November, 1899.

Tied monument February, 1960.

Found cast iron monument flush, August 26, 1976 (The origin of the last iron monument has not been determined; tie to the SE corner of house no. 2255 matched February 1960 tie).

Checked monument, September 12, 1977.

Tied monument, November 29, 1982.

Checked monument, August 9, 1990.

Monument broken off, tied and set P.K. nails, May 10, 1996.

Set a 20 in. cast iron monument, down +/-15 in. within a cast iron manhole assembly, October 28, 1997.

Tied monument, June 23, 2006.

Retied a cast iron monument within a cast iron manhole assembly, July 22, 2011.