

MONUMENT 368

CERTIFICATE OF LOCATION OF GOVERNMENT CORNER

North Quarter Corner of Section 11, Township 29 North, Range 22 West, County of Ramsey, State of Minnesota.

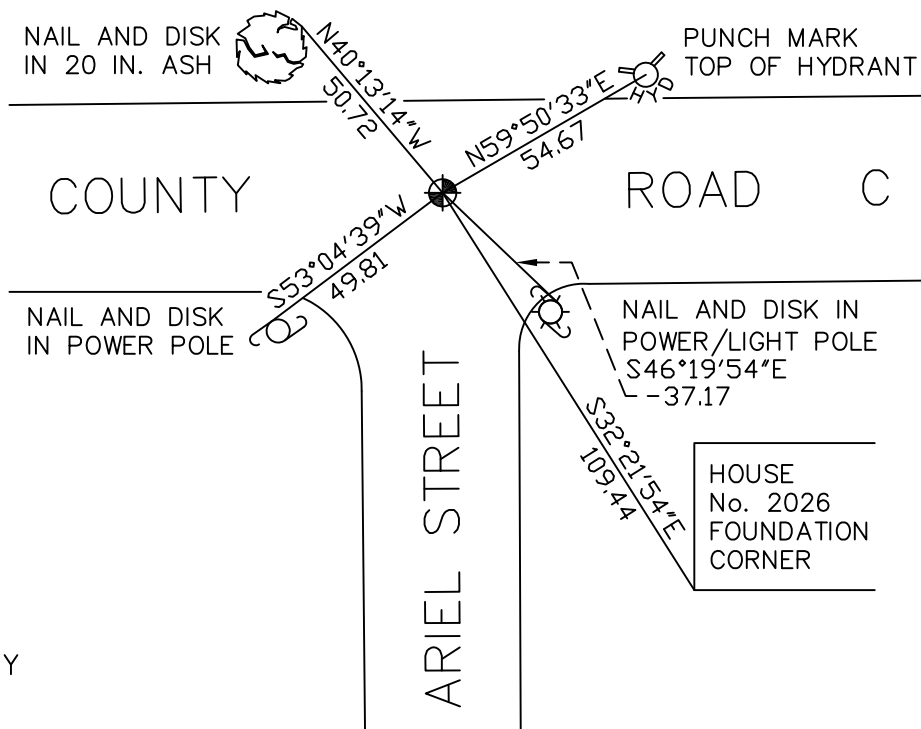
At the corner location shown on the sketch

On October 9, 2009 found a cast iron monument, within a cast iron manhole assembly.

left monument as found lowered monument removed monument (explain)

On _____ placed a _____

SKETCH OF REFERENCE TIES



RAMSEY COUNTY
NAD83 (1986)
MONUMENT 368

X= 595219.157 (Easting)
Y= 183982.147 (Northing)

ALL DISTANCES ARE SHOWN IN U.S. SURVEY FEET.
BEARINGS ARE FOR TIE REFERENCE PURPOSES ONLY.

Statements of evidence relative to this corner are on the following page(s).

I hereby certify that this document and the data contained herein was prepared by me or under my direct supervision this _____ day of _____, 20____.

SIGNATURE

Minnesota License No. _____

- County Surveyor Deputy County Surveyor Land Surveyor

OFFICE OF COUNTY SURVEYOR
County of Ramsey

I hereby certify that this document was filed in the County Surveyor's office on the _____ day of _____, 20____.

SIGNATURE

Michael D. Fiebiger, P.L.S.
Ramsey County Surveyor

MONUMENT 368

Found a granite monument down 7 in., March 8, 1976.

Set a short cast iron monument, May 14, 1976.

Tied monument, May 13, 1981.

Monument removed by construction, 1988.

Replaced cast iron monument, 1989.

Tied monument, July 17, 1990.

Retied monument, April 7, 2003.

Monument lowered and placed within a cast iron manhole assembly during mill and overlay project, July 19, 2005.

Tied monument, October 9, 2009.